

Pacific Blue™ anti-human CD86

Catalog # / Size: 305417 / 25 µg
305418 / 100 µg
305423 / 100 tests

Clone: IT2.2

Isotype: Mouse IgG2b, κ

Workshop Number: VI CD86.8

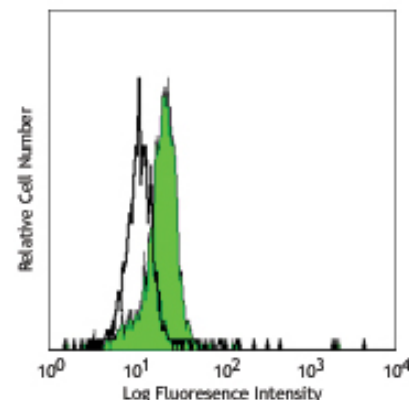
Reactivity: Human, **Cross-Reactivity:** Baboon, Capuchin Monkey, Common Marmoset, Cotton-topped Tamarin, Chimpanzee, Cynomolgus, Rhesus

Preparation: The antibody was purified by affinity chromatography, and conjugated with Pacific Blue™ under optimal conditions. The solution is free of unconjugated Pacific Blue™.

Formulation: test size: Phosphate-buffered solution, pH 7.2, containing 0.09% sodium azide and 0.2% (w/v) BSA (origin USA).
µg sizes: Phosphate-buffered solution, pH 7.2, containing 0.09% sodium azide.

Concentration: test size: lot-specific; µg sizes: 0.5 mg/ml

Storage: The CD86 antibody solution should be stored undiluted at 4°C, and protected from prolonged exposure to light. **Do not freeze.**



Human peripheral blood monocytes stained with IT2.2 Pacific Blue™

Applications:

Applications: FC - Quality tested

Recommended Usage: Each lot of this antibody is quality control tested by immunofluorescent staining with flow cytometric analysis. **For test size**, the suggested use of this reagent for immunofluorescent staining is 5 µl per 10⁶ cells in 100 µl volume. **For µg sizes**, the suggested use of this reagent for immunofluorescent staining is ≤0.5 µg per 10⁶ cells in 100 µl volume. It is recommended that the reagent be titrated for optimal performance for each application.

* Pacific Blue™ has a maximum emission of 455 nm when it is excited at 405 nm. Prior to using Pacific Blue™ conjugate for flow cytometric analysis, please verify your flow cytometer's capability of exciting and detecting the fluorochrome.

** Pacific Blue™ is a registered trademark of Molecular Probes, Inc. Pacific Blue™ dye antibody conjugates are sold under license from Molecular Probes, Inc. for research use only, except for use in combination with microarrays and high content screening, and are covered by pending and issued patents.

Application Notes: Additional reported applications (for the relevant formats) include: immunohistochemical staining of acetone-fixed frozen tissue sections, Western blotting³, and blocking of T cell activation^{2,4,5}. The LEAF™ Purified antibody (Endotoxin <0.1 EU/µg, Azide-Free, 0.2 µm filtered) is recommended for functional assays (Cat. No. 305410).

Application References:

1. Kishimoto T, *et al.* Eds. 1997. Leucocyte Typing VI. Garland Publishing Inc. London.
2. Dieu M. 1998. *J. Exp. Med.* 188:373. (Block)
3. Esser M, *et al.* 2001. *J. Virol.* 75:6173. (WB)
4. Jeannin P, *et al.* 1999. *J. Immunol.* 162:2044. (Block)
5. Kapsogeorgou EK, *et al.* 2001. *J. Immunol.* 166:3107. (Block)
6. Geissmann F, *et al.* 2001. *Blood* 97:1241. (IHC)
7. Liu WM, *et al.* 2012. *Vaccine.* 30:1659. PubMed.
8. Tavano B, *et al.* 2013. *J. Immunol.* 190:2622. PubMed.
9. Gustafsson RK, *et al.* 2013. *PLoS One.* 8:e58122. PubMed.

Description: CD86 is an 80 kD immunoglobulin superfamily member also known as B7-2, B70, and Ly-58. CD86 is expressed on activated B and T cells, monocytes/macrophages, dendritic cells, and astrocytes. CD86, along with CD80, is the ligand of CD28 and CD152 (CTLA-4). CD86 is expressed earlier in the immune response than CD80. CD86 has also been shown to be involved in immunoglobulin class-switching and triggering of NK cell-mediated cytotoxicity. CD86 binds to CD28 to transduce costimulatory signals for T cell activation, proliferation, and cytokine production. CD86 can also bind to CD152, also known as CTLA-4, to deliver an inhibitory signal to T cells.

Antigen References:

1. Hathcock K, *et al.* 1996. *Adv. Immunol.* 62:131.
2. June C, *et al.* 1994. *Immunol. Today* 15:321.

Related Products: **Product**
Cell Staining Buffer
RBC Lysis Buffer (10X)

Clone

Application
FC, ICC, ICFC
FC, ICFC



For research use only. Not for diagnostic use. Not for resale. BioLegend will not be held responsible for patent infringement or other violations that may occur with the use of our products.



*These products may be covered by one or more Limited Use Label Licenses (see the BioLegend Catalog or our website, www.biollegend.com/ordering#license). BioLegend products may not be transferred to third parties, resold, modified for resale, or used to manufacture commercial products, reverse engineer functionally similar materials, or to provide a service to third parties without written approval of BioLegend. By use of these products you accept the terms and conditions of all applicable Limited Use Label Licenses. Unless otherwise indicated, these products are for research use only and are not intended for human or animal diagnostic, therapeutic or commercial use.

Pacific Blue™ Mouse IgG2b, κ Isotype Ctrl
Human TruStain FcX™ (Fc Receptor Blocking Solution)

MPC-11

FC, ICFC
FC, ICC, ICFC



For research use only. Not for diagnostic use. Not for resale. BioLegend will not be held responsible for patent infringement or other violations that may occur with the use of our products.



*These products may be covered by one or more Limited Use Label Licenses (see the BioLegend Catalog or our website, www.biolegend.com/ordering#license). BioLegend products may not be transferred to third parties, resold, modified for resale, or used to manufacture commercial products, reverse engineer functionally similar materials, or to provide a service to third parties without written approval of BioLegend. By use of these products you accept the terms and conditions of all applicable Limited Use Label Licenses. Unless otherwise indicated, these products are for research use only and are not intended for human or animal diagnostic, therapeutic or commercial use.

BioLegend Inc., 9727 Pacific Heights Blvd, San Diego, CA 92121 www.biolegend.com
Toll-Free Phone: 1-877-Bio-Legend (246-5343) Phone: (858) 768-5800 Fax: (877) 455-9587