

## LEAF™ Purified anti-human CD80

**Catalog # / Size:** 305211 / 50 µg  
305212 / 500 µg

**Clone:** 2D10

**Isotype:** Mouse IgG1, κ

**Workshop Number:** VI CD80.1

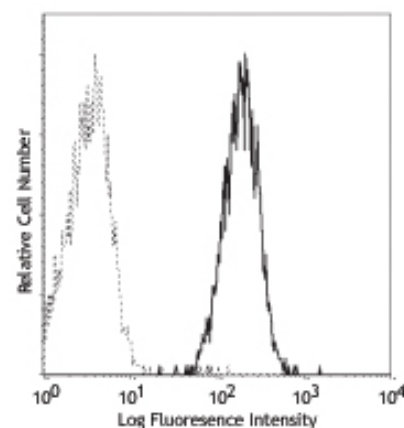
**Reactivity:** Human, **Cross-Reactivity:** Rhesus

**Preparation:** The LEAF™ (Low Endotoxin, Azide-Free) antibody was purified by affinity chromatography.

**Formulation:** 0.2 µm filtered in phosphate-buffered solution, pH 7.2, containing no preservative. Endotoxin level is <0.1 EU/µg of the protein (<0.01 ng/µg of the protein) as determined by the LAL test.

**Concentration:** 1.0 mg/ml

**Storage:** The antibody solution should be stored undiluted at 4°C. This LEAF™ solution contains no preservative; handle under aseptic conditions.



Daudi (human B Burkitt's lymphoma cell line) cells stained with 2D10 PE

## Applications:

**Applications:** FC - *Quality tested*  
IP, Block, WB, IHC - *Reported in the literature*

**Recommended Usage:** Each lot of this antibody is quality control tested by immunofluorescent staining with flow cytometric analysis. For immunofluorescent staining, the suggested use of this reagent is ≤2.0 µg per million cells in 100 µl volume or 100 µl of whole blood. It is recommended that the reagent be titrated for optimal performance for each application.

**Application Notes:** Additional reported applications (for the relevant formats) include: *in vitro* blocking of T cell activation, immunohistochemical staining of acetone-fixed frozen tissue sections<sup>2</sup>, immunoprecipitation, and Western blotting<sup>3</sup>. The LEAF™ purified antibody (Endotoxin <0.1 EU/µg, Azide-Free, 0.2 µm filtered) is recommended for functional assays (Cat. No. 305212).

**Application References:**

1. Kishimoto T, *et al.* Eds. 1997. Leucocyte Typing VI. Garland Publishing Inc. London.
2. Battifora M. 1998. *J. Clin. Endocr. Metab.* 83:4130. (IHC)
3. Van der Merwe PA, *et al.* 1997. *J. Exp. Med.* 185:3. (WB)
4. Jayakumar A, *et al.* 2008. *Infect. Immun.* 76:2138. PubMed
5. Schubert DA, *et al.* 2012. *J. Exp. Med.* 209:335. PubMed

**Description:** CD80, also known as B7-1, B7, and BB1, is a 60 kD single chain type I glycoprotein belonging to the immunoglobulin superfamily. CD80 is expressed on activated B and T cells, macrophages, and dendritic cells. CD80 binds to CD28 and CD152 (CTLA-4). Along with CD86, CD80 plays a critical role in regulation of T cell activation. The interaction of CD80 with CD28 provides a potent costimulatory signal for T cell activation through the CD3 complex, while its interaction with CTLA-4 provides an inhibitory signal for T cell activation.

**Antigen References:**

1. Freeman G, *et al.* 1991. *J. Exp. Med.* 174:625.
2. Linsley P, *et al.* 1996. *Immunity* 4:535.
3. Linsley P, *et al.* 1991. *J. Exp. Med.* 174:561.

### Related Products:Product

LEAF™ Purified anti-human CD28  
 LEAF™ Purified anti-human CD86  
 LEAF™ Purified Mouse IgG1, κ Isotype Ctrl  
 Cell Staining Buffer  
 RBC Lysis Buffer (10X)  
 Purified anti-human CD275 (B7-H2, ICOSL)

**Clone**  
 CD28.2  
 IT2.2  
 MOPC-21  
  
 2D3

**Application**  
 Activ, Costim, FC, IHC, IP,  
 FC, Block, IHC, WB  
 FC, ICFC, WB, IP, ICC, IF, FA  
 FC, ICC, ICFC  
 FC, ICFC  
 FC, IP, ELISA



For research use only. Not for diagnostic use. Not for resale. BioLegend will not be held responsible for patent infringement or other violations that may occur with the use of our products.



\*These products may be covered by one or more Limited Use Label Licenses (see the BioLegend Catalog or our website, [www.biolegend.com/ordering#license](http://www.biolegend.com/ordering#license)). BioLegend products may not be transferred to third parties, resold, modified for resale, or used to manufacture commercial products, reverse engineer functionally similar materials, or to provide a service to third parties without written approval of BioLegend. By use of these products you accept the terms and conditions of all applicable Limited Use Label Licenses. Unless otherwise indicated, these products are for research use only and are not intended for human or animal diagnostic, therapeutic or commercial use.