

# Product Data Sheet

## FITC anti-human CD80

**Catalog # / Size:** 305205 / 25 tests  
305206 / 100 tests

**Clone:** 2D10

**Isotype:** Mouse IgG1,  $\kappa$

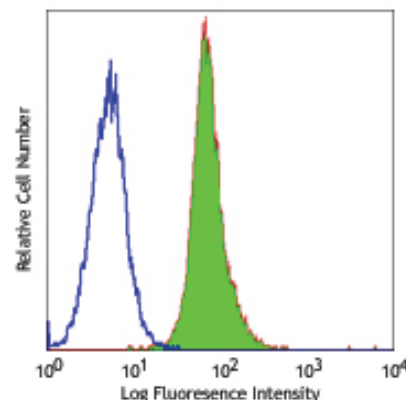
**Workshop Number:** VI CD80.1

**Reactivity:** Human, **Cross-Reactivity:** Rhesus

**Preparation:** The antibody was purified by affinity chromatography, and conjugated with FITC under optimal conditions. The solution is free of unconjugated FITC.

**Formulation:** Phosphate-buffered solution, pH 7.2, containing 0.09% sodium azide and 0.2% (w/v) BSA (origin USA).

**Storage:** The antibody solution should be stored undiluted at 4°C and protected from prolonged exposure to light. **Do not freeze.**



Human B-cell Burkitt's lymphoma cell line Daudi stained with 2D10 FITC

## Applications:

**Applications:** FC - Quality tested

**Recommended Usage:** Each lot of this antibody is quality control tested by immunofluorescent staining with flow cytometric analysis. **Test size products are transitioning from 20  $\mu$ l to 5  $\mu$ l per test.** Please check your vial or your CoA to find the suggested use of this reagent per million cells in 100  $\mu$ l staining volume or per 100  $\mu$ l of whole blood. It is recommended that the reagent be titrated for optimal performance for each application. Read more at [www.biolegend.com/testsize](http://www.biolegend.com/testsize) regarding the test size change.

**Application Notes:** Additional reported applications (for the relevant formats) include: *in vitro* blocking of T cell activation, immunohistochemical staining of acetone-fixed frozen tissue sections<sup>2</sup>, immunoprecipitation, and Western blotting<sup>3</sup>. The LEAF™ purified antibody (Endotoxin <0.1 EU/ $\mu$ g, Azide-Free, 0.2  $\mu$ m filtered) is recommended for functional assays (Cat. No. 305212).

**Application References:**

1. Kishimoto T, *et al.* Eds. 1997. Leucocyte Typing VI. Garland Publishing Inc. London.
2. Battifora M. 1998. *J. Clin. Endocr. Metab.* 83:4130. (IHC)
3. Van der Merwe PA, *et al.* 1997. *J. Exp. Med.* 185:3. (WB)
4. Jayakumar A, *et al.* 2008. *Infect. Immun.* 76:2138. PubMed
5. Schubert DA, *et al.* 2012. *J. Exp. Med.* 209:335. PubMed
6. Dali J, *et al.* 2012. *Blood.* 120:e60. PubMed

**Description:** CD80, also known as B7-1, B7, and BB1, is a 60 kD single chain type I glycoprotein belonging to the immunoglobulin superfamily. CD80 is expressed on activated B and T cells, macrophages, and dendritic cells. CD80 binds to CD28 and CD152 (CTLA-4). Along with CD86, CD80 plays a critical role in regulation of T cell activation. The interaction of CD80 with CD28 provides a potent costimulatory signal for T cell activation through the CD3 complex, while its interaction with CTLA-4 provides an inhibitory signal for T cell activation.

**Antigen References:**

1. Freeman G, *et al.* 1991. *J. Exp. Med.* 174:625.
2. Linsley P, *et al.* 1996. *Immunity* 4:535.
3. Linsley P, *et al.* 1991. *J. Exp. Med.* 174:561.

### Related Products:

| Product   | Clone   | Application   |
|---|---------|---------------|
| FITC anti-human CD28                                | CD28.2  | FC            |
| PE anti-human CD86                                  | IT2.2   | FC            |
| FITC Mouse IgG1, $\kappa$ Isotype Ctrl              | MOPC-21 | FC, ICFC      |
| Cell Staining Buffer                                |         | FC, ICC, ICFC |
| RBC Lysis Buffer (10X)                              |         | FC, ICFC      |
| PE anti-human CD275 (B7-H2, ICOSL)                  | 2D3     | FC            |
| Human TruStain FcX™ (Fc Receptor Blocking Solution) |         | FC, ICC, ICFC |



For research use only. Not for diagnostic use. Not for resale. BioLegend will not be held responsible for patent infringement or other violations that may occur with the use of our products.



\*These products may be covered by one or more Limited Use Label Licenses (see the BioLegend Catalog or our website, [www.biolegend.com/ordering#license](http://www.biolegend.com/ordering#license)). BioLegend products may not be transferred to third parties, resold, modified for resale, or used to manufacture commercial products, reverse engineer functionally similar materials, or to provide a service to third parties without written approval of BioLegend. By use of these products you accept the terms and conditions of all applicable Limited Use Label Licenses. Unless otherwise indicated, these products are for research use only and are not intended for human or animal diagnostic, therapeutic or commercial use.