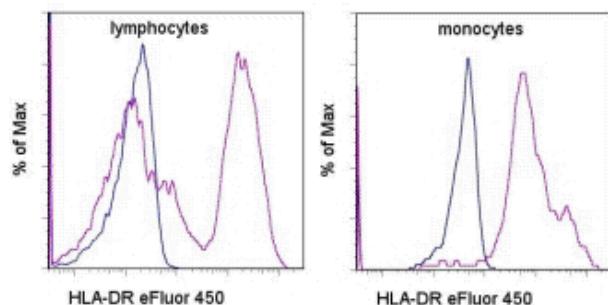


## Anti-Human HLA-DR eFluor® 450

Catalog Number: 48-9952

Also Known As:

RUO: For Research Use Only. Not for use in diagnostic procedures.



Staining of normal human peripheral blood cells with Mouse IgG2a kappa Isotype Control eFluor® 450 (cat. 48-4724) (blue histogram) or Anti-Human HLA-DR eFluor® 450 (purple histogram). Cells in the lymphocyte (left) or monocyte (right) gate were used for analysis.

### Product Information

**Contents:** Anti-Human HLA-DR eFluor® 450


**REF** **Catalog Number:** 48-9952

**Clone:** L243

**Concentration:** 5 µl (0.125 µg)/test


**Host/Isotype:** Mouse IgG2a, kappa

**Formulation:** aqueous buffer, 0.09% sodium azide, may contain carrier protein/stabilizer

 **Temperature Limitation:** Store at 2-8°C. Do not freeze. Light sensitive material.

**LOT** **Batch Code:** Refer to Vial

 **Use By:** Refer to Vial

 **Caution, contains Azide**

### Description

The L243 mAb reacts with the human major histocompatibility complex (MHC) class II, HLA-DR. HLA-DR is expressed on the surface of human antigen presenting cells (APC) including B cells, monocytes, macrophages, DCs, and activated T cells. HLA-DR is a heterodimeric transmembrane protein composed of  $\alpha$  and  $\beta$  subunits and plays an important role in the presentation of peptides to CD4<sup>+</sup> T lymphocytes. The L243 antibody recognizes a different epitope than the LN3 monoclonal antibody, and these antibodies do not cross-block binding to each other's respective epitopes.

### Applications Reported

This L243 antibody has been reported for use in flow cytometric analysis.

**eFluor® 450 is a replacement for Pacific Blue®. eFluor® 450 emits at 456 nm and is excited with the Violet laser. Please make sure that your instrument is capable of detecting this fluorochoime.**

### Applications Tested

This L243 antibody has been pre-titrated and tested by flow cytometric analysis of normal human peripheral blood cells. This can be used at 5 µl (0.125 µg)/per test. A test is defined as the amount (µg)/test of antibody that will stain a cell sample in a final volume of 100 µL. Cell number should be determined empirically but can range from 10<sup>5</sup> to 10<sup>8</sup> cells/test.

**eFluor™ 450 is a replacement for Pacific Blue®. eFluor™ 450 emits at 456 nm and is excited with the Violet laser (405 nm). Please make sure that your instrument is capable of detecting this fluorochoime.**

### References

Brodsky FM. A matrix approach to human class II histocompatibility antigens: reactions of four monoclonal antibodies with the products of nine haplotypes. Immunogenetics. 1984;19(3):179-94

Engleman EG, Warnke R, Fox RI, Dilley J, Benike CJ, Levy R. Studies of a human T lymphocyte antigen recognized by a monoclonal antibody. Proc Natl Acad Sci U S A. 1981 Mar;78(3):1791-5.

### Related Products

11-0038 Anti-Human CD3 FITC (UCHT1)

48-4724 Mouse IgG2a K Isotype Control eFluor® 450

93-0118 Anti-Human CD11b eFluor® 605NC (ICRF44)

---

Not for further distribution without written consent.

Copyright © 2000-2010 eBioscience, Inc.

Tel: 888.999.1371 or 858.642.2058 • Fax: 858.642.2046 • [www.eBioscience.com](http://www.eBioscience.com) • [info@eBioscience.com](mailto:info@eBioscience.com)