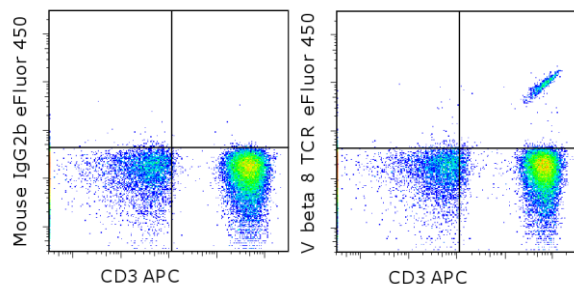


## Anti-Human V beta 8 TCR eFluor<sup>®</sup> 450

**Catalog Number:** 48-9890

**RUO: For Research Use Only. Not for use in diagnostic procedures.**



Staining of normal human peripheral blood cells with Anti-Human CD3 APC (cat. 17-0038) and Mouse IgG2b kappa Isotype Control eFluor<sup>®</sup> 450 (cat. 48-4732) (left) or Anti-Human V beta 8 TCR eFluor<sup>®</sup> 450 (right). Cells in the lymphocyte gate were used for analysis.

### Product Information

**Contents:** Anti-Human V beta 8 TCR eFluor<sup>®</sup> 450

**REF** **Catalog Number:** 48-9890

**Clone:** JR-2

**Concentration:** 5 uL (0.25 ug)/test

**Host/Isotype:** Mouse IgG2b, kappa

**Formulation:** aqueous buffer, 0.09% sodium azide, may contain carrier protein/stabilizer

**Temperature Limitation:** Store at 2-8°C. Do not freeze. Light-sensitive material.

**Batch Code:** Refer to vial

**Use By:** Refer to vial



### Description

This JR-2 monoclonal antibody reacts with the human T cell receptor (TCR) V $\beta$  8 allele. Composed of an  $\alpha$  and  $\beta$  chain, TCR specificity is typically determined by V $\alpha$ , J $\alpha$ , V $\beta$ , D $\beta$ , and J $\beta$  gene rearrangement. V $\beta$  expression in humans has been examined in studies on the effects of superantigens, inflammation, autoimmune disease, and HIV infection. More recently, assessment of TCR V $\beta$  expression has been used to phenotype T cell clonality in CD3+/TCR $\alpha\beta$ + large granular lymphocyte leukemias. A member of the Ig superfamily, this receptor is expressed on a subset of peripheral blood T cells.

### Applications Reported

This JR-2 antibody has been reported for use in flow cytometric analysis.

### Applications Tested

This JR-2 antibody has been pre-titrated and tested by flow cytometric analysis of normal human peripheral blood cells. This can be used at 5  $\mu$ L (0.25  $\mu$ g) per test. A test is defined as the amount ( $\mu$ g) of antibody that will stain a cell sample in a final volume of 100  $\mu$ L. Cell number should be determined empirically but can range from 10<sup>5</sup> to 10<sup>6</sup> cells/test.

**eFluor<sup>®</sup> 450 is a replacement for Pacific Blue<sup>®</sup>. eFluor<sup>®</sup> 450 emits at 456 nm and is excited with the Violet laser (405 nm). Please make sure that your instrument is capable of detecting this fluorochrome.**

### References

Lima M, Almeida J, Santos AH, dos Anjos Teixeira M, Alguero MC, Queirós ML, Balanzategui A, Justiça B, Gonzalez M, San Miguel JF, Orfao A. Immunophenotypic analysis of the TCR-Vbeta repertoire in 98 persistent expansions of CD3(+)/TCR-alpha-beta(+) large granular lymphocytes: utility in assessing clonality and insights into the pathogenesis of the disease. *Am J Pathol.* 2001 Nov;159(5):1861-8.

Stuart PM, Munn RK, DeMoll E, Woodward JG. Characterization of human T-cell responses to Yersinia enterocolitica superantigen. *Hum Immunol.* 1995 Aug;43(4):269-75. (JR-2, FC)

Choi YW, Kotzin B, Lafferty J, White J, Pigeon M, Kubo R, Kappler J, Marrack P. A method for production of

Not for further distribution without written consent.

Copyright © 2000-2012 eBioscience, Inc.

Tel: 888.999.1371 or 858.642.2058 • Fax: 858.642.2046 • www.ebioscience.com •  
info@ebioscience.com

---

## Anti-Human V beta 8 TCR eFluor® 450

**Catalog Number:** 48-9890

**RUO: For Research Use Only. Not for use in diagnostic procedures.**

---

antibodies to human T-cell receptor beta-chain variable regions. Proc Natl Acad Sci U S A. 1991 Oct 1;88(19):8357-61.

### Related Products

17-0038 Anti-Human CD3 APC (UCHT1)

48-4732 Mouse IgG2b K Isotype Control eFluor® 450

---

Not for further distribution without written consent.

Copyright © 2000-2012 eBioscience, Inc.

Tel: 888.999.1371 or 858.642.2058 • Fax: 858.642.2046 • [www.ebioscience.com](http://www.ebioscience.com) •  
[info@ebioscience.com](mailto:info@ebioscience.com)