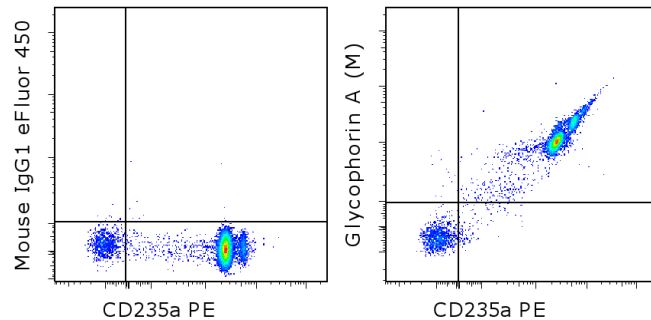


Anti-Human Glycophorin A (M) eFluor[®] 450

Catalog Number: 48-9884

RUO: For Research Use Only. Not for use in diagnostic procedures.



Staining of normal human peripheral blood cells with Anti-Human CD235a (Glycophorin A) PE (cat. 12-9987) and Mouse IgG1 K Isotype Control eFluor[®] 450 (cat. 48-4714) (left) or Anti-Human Glycophorin A (M) eFluor[®] 450 (right). RBC gate used for analysis.

Product Information

Contents: Anti-Human Glycophorin A (M) eFluor[®] 450

REF **Catalog Number:** 48-9884

Clone: 6A7M

Concentration: 5 μ L (0.5 μ g)/test

Host/Isotype: Mouse IgG1, kappa

Formulation: aqueous buffer, 0.09% sodium azide, may contain carrier protein/stabilizer

Temperature Limitation: Store at 2-8°C. Do not freeze. Light-sensitive material.

Batch Code: Refer to vial

Use By: Refer to vial



LOT



Description

The monoclonal antibody 6A7M recognizes human glycophorin A (also known as CD235a). The antibody reacts with the M allele. Glycophorin A is a 151 amino acid sialoglycoprotein found on the erythrocyte (RBC) and erythroid progenitor cell membrane at about 500,000 copies per cell. The gene for glycophorin resides on chromosome 4 and has 2 allelic forms: M and N, which differ in two amino acids. The M group possesses Ser1 and Gly5 while the N group has Leu1 and Glu5. Recent data suggest that exposure to toxins can cause mutation or loss of an allele resulting in phenotypic changes. Studies are also beginning to correlate genotype/phenotype with predisposition to cancer and heart disease.

Applications Reported

This 6A7M antibody has been reported for use in flow cytometric analysis.

Applications Tested

This 6A7M antibody has been pre-titrated and tested by flow cytometric analysis of human peripheral blood cells. This can be used at 5 μ L (0.5 μ g) per test. A test is defined as the amount (μ g) of antibody that will stain a cell sample in a final volume of 100 μ L. Cell number should be determined empirically but can range from 10^5 to 10^8 cells/test.

eFluor[®] 450 is a replacement for Pacific Blue[®]. eFluor[®] 450 emits at 456 nm and is excited with the Violet laser (405 nm). Please make sure that your instrument is capable of detecting this fluorochrome.

References

Lansdorp PM, Dragowska W. Long-term erythropoiesis from constant numbers of CD34+ cells in serum-free cultures initiated with highly purified progenitor cells from human bone marrow. J Exp Med. 1992 Jun 1;175(6):1501-9.

Langlois RG, Bigbee WL, Jensen RH. Flow cytometric characterization of normal and variant cells with monoclonal antibodies specific for glycophorin A. J Immunol. 1985 Jun;134(6):4009-17.

Related Products

11-9886 Anti-Human Glycophorin A (MN) FITC (10F7MN)

Not for further distribution without written consent.

Copyright © 2000-2012 eBioscience, Inc.

Tel: 888.999.1371 or 858.642.2058 • Fax: 858.642.2046 • www.ebioscience.com •
info@ebioscience.com

Anti-Human Glycophorin A (M) eFluor® 450

Catalog Number: 48-9884

RUO: For Research Use Only. Not for use in diagnostic procedures.

17-9885 Anti-Human Glycophorin A (N) APC (8A2N)

46-9987 Anti-Human CD235a (Glycophorin A) PerCP-eFluor® 710 (HIR2 (also GA-R2))

48-4714 Mouse IgG1 K Isotype Control eFluor® 450 (P3.6.2.8.1)

Not for further distribution without written consent.

Copyright © 2000-2012 eBioscience, Inc.

Tel: 888.999.1371 or 858.642.2058 • Fax: 858.642.2046 • www.ebioscience.com •
info@ebioscience.com