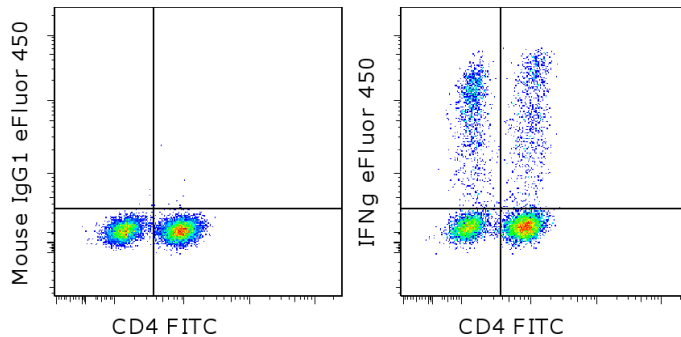


Anti-Human IFN gamma eFluor[®] 450

Catalog Number: 48-7319

Also known as: Interferon gamma

RUO: For Research Use Only. Not for use in diagnostic procedures.



Intracellular staining of 5-hour PMA/ionomycin stimulated normal human peripheral blood cells (in the presence of Brefeldin A) with Anti-Human CD4 FITC (cat. 11-0049) and Mouse IgG1 K Isotype Control eFluor[®] 450 (cat. 48-4714) (left) or Anti-Human IFN gamma eFluor[®] 450 (right). Cells in the lymphocyte gate were used for analysis.

Product Information

Contents: Anti-Human IFN gamma eFluor[®] 450

REF **Catalog Number:** 48-7319

Clone: 4S.B3

Concentration: 5 μ L (0.25 μ g)/test

Host/Isotype: Mouse IgG1, kappa

Formulation: aqueous buffer, 0.09% sodium azide, may contain carrier protein/stabilizer

Temperature Limitation: Store at 2-8°C. Do not freeze. Light sensitive material.

Batch Code: Refer to vial

Use By: Refer to vial

Contains sodium azide



Description

The 4S.B3 monoclonal antibody reacts with interferon-gamma (IFN gamma). The 4S.B3 antibody is a neutralizing antibody. Human IFN gamma is a 17 kDa factor produced by activated T and NK cells and is an anti-viral and anti-parasitic cytokine. IFN gamma in synergy with other cytokines, such as TNF alpha, inhibits proliferation of normal and transformed cells. Immunomodulatory effects of IFN gamma are exerted on a wide range of cell types expressing the high affinity receptors for IFN gamma. Glycosylation of IFN gamma does not affect its biological activity.

Applications Reported

This 4S.B3 antibody has been reported for use in intracellular staining followed by flow cytometric analysis.

Applications Tested

This 4S.B3 antibody has been pre-titrated and tested by intracellular staining and flow cytometric analysis of stimulated normal human peripheral blood cells. This can be used at 5 μ L (0.25 μ g) per test. A test is defined as the amount (μ g) of antibody that will stain a cell sample in a final volume of 100 μ L. Cell number should be determined empirically but can range from 10^5 to 10^8 cells/test.

eFluor[®] 450 is a replacement for Pacific Blue[®]. eFluor[®] 450 emits at 456 nm and is excited with the Violet laser (405 nm). Please make sure that your instrument is capable of detecting this fluorochrome.

References

Meager A, Parti S, Barwick S, Spragg J, O'Hagan K. Detection of hybridomas secreting monoclonal antibodies to human gamma interferon using a rapid screening technique and specificity of certain monoclonal antibodies to gamma interferon. J Interferon Res. 1984 Fall;4(4):619-25.

Related Products

11-0049 Anti-Human CD4 FITC (RPA-T4)

48-4714 Mouse IgG1 K Isotype Control eFluor[®] 450 (P3.6.2.8.1)

88-8823 Fixation & Permeabilization Buffers

Not for further distribution without written consent.

Copyright © 2000-2012 eBioscience, Inc.

Tel: 888.999.1371 or 858.642.2058 • Fax: 858.642.2046 • www.ebioscience.com •
info@ebioscience.com

Anti-Human IFN gamma eFluor® 450

Catalog Number: 48-7319

Also known as: Interferon gamma

RUO: For Research Use Only. Not for use in diagnostic procedures.

Not for further distribution without written consent.

Copyright © 2000-2012 eBioscience, Inc.

Tel: 888.999.1371 or 858.642.2058 • Fax: 858.642.2046 • www.ebioscience.com •
info@ebioscience.com