

## Alexa Fluor® 488 anti-human CD66a/c/e

**Catalog # / Size:** 342305 / 25 tests  
342306 / 100 tests

**Clone:** ASL-32

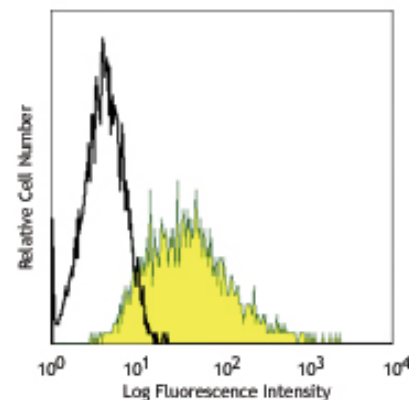
**Isotype:** Mouse IgG2b,  $\kappa$

**Reactivity:** Human

**Preparation:** The antibody was purified by affinity chromatography, and conjugated with Alexa Fluor® 488 under optimal conditions. The solution is free of unconjugated Alexa Fluor® 488.

**Formulation:** Phosphate-buffered solution, pH 7.2, containing 0.09% sodium azide and 0.2% (w/v) BSA (origin USA).

**Storage:** The antibody solution should be stored undiluted at 4°C and protected from prolonged exposure to light. **Do not freeze.**



Human colorectal adenocarcinoma cell line HT-29 stained with ASL-32 Alexa Fluor® 488

## Applications:

**Applications:** FC - Quality tested

**Recommended Usage:** Each lot of this antibody is quality control tested by immunofluorescent staining with flow cytometric analysis. For immunofluorescent staining, the suggested use of this reagent is 5  $\mu$ l per million cells or 5  $\mu$ l per 100  $\mu$ l of whole blood. It is recommended that the reagent be titrated for optimal performance for each application.

\* Alexa Fluor® 488 has a maximum emission of 519 nm when it is excited at 488 nm.

\*\* Alexa Fluor® is a registered trademark of Molecular Probes, Inc. Alexa Fluor® dye antibody conjugates are sold under license from Molecular Probes, Inc. for research use only, except for use in combination with microarrays and high content screening, and are covered by pending and issued patents.

**Description:** The ASL-32 mAb reacts with an antigen epitope shared by CD66a, c and e. CD66a/c/e are members of the CEA (carcinoembryonic antigen) family of the Ig superfamily. CD66 plays a role in hemophilic and heterophilic adhesion. CD66a, also known as CEACAM1 and BGP (biliary glycoprotein), is mainly expressed on granulocytes, binds to CD66a, c, e, and CD62E. CD66c (known as CEACAM6, NCA) is expressed on granulocytes and epithelial cells. The ligands of CD66c are CD66a-e, CD62E and Galectins. CD66e molecule is also called as CEA or CEACAM5, primarily found on epithelial cells. CD66e binds to CD66a, c and e.

**Antigen References:** 1. Zola H, *et al.* 2007. *Leukocyte and Stromal Cell Molecules: The CD Markers*. Wiley-Liss. A John Wiley & Sons Inc. Publication

### Related Products:

<b>Product</b>	<b>Clone</b>	<b>Application</b>
Alexa Fluor® 488 Mouse IgG2b, $\kappa$ Isotype Ctrl	MPC-11	FC, ICFC
Cell Staining Buffer		FC, ICC, ICFC
RBC Lysis Buffer (10X)		FC, ICFC
Human TruStain FcX™ (Fc Receptor Blocking Solution)		FC, ICC, ICFC



For research use only. Not for diagnostic use. Not for resale. BioLegend will not be held responsible for patent infringement or other violations that may occur with the use of our products.



\*These products may be covered by one or more Limited Use Label Licenses (see the BioLegend Catalog or our website, [www.biolegend.com/ordering#license](http://www.biolegend.com/ordering#license)). BioLegend products may not be transferred to third parties, resold, modified for resale, or used to manufacture commercial products, reverse engineer functionally similar materials, or to provide a service to third parties without written approval of BioLegend. By use of these products you accept the terms and conditions of all applicable Limited Use Label Licenses. Unless otherwise indicated, these products are for research use only and are not intended for human or animal diagnostic, therapeutic or commercial use.