

## APC anti-human CD62E

**Catalog # / Size:** 336011 / 25 tests  
336012 / 100 tests

**Clone:** HAE-1f

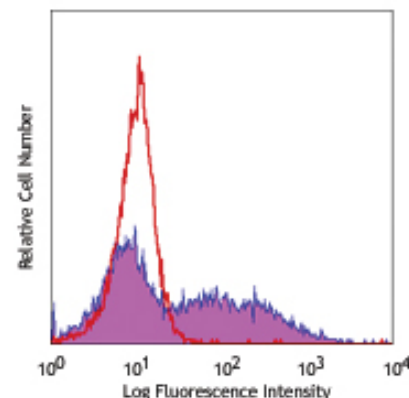
**Isotype:** Mouse IgG1,  $\kappa$

**Reactivity:** Human

**Preparation:** The antibody was purified by affinity chromatography, and conjugated with APC under optimal conditions. The solution is free of unconjugated APC and unconjugated antibody.

**Formulation:** Phosphate-buffered solution, pH 7.2, containing 0.09% sodium azide and 0.2% (w/v) BSA (origin USA).

**Storage:** The antibody solution should be stored undiluted at 4°C and protected from prolonged exposure to light. **Do not freeze.**



LPS stimulated (16hr) HUVEC cells stained with HAE-1f APC

## Applications:

**Applications:** FC - Quality tested

**Recommended Usage:** Each lot of this antibody is quality control tested by immunofluorescent staining with flow cytometric analysis. **Test size products are transitioning from 20  $\mu$ l to 5  $\mu$ l per test.** Please check your vial or your CoA to find the suggested use of this reagent per million cells in 100  $\mu$ l staining volume or per 100  $\mu$ l of whole blood. It is recommended that the reagent be titrated for optimal performance for each application. Read more at [www.biolegend.com/testsize](http://www.biolegend.com/testsize) regarding the test size change.

**Application Notes:** Additional reported applications: blocks CD62E binding to its ligand

**Application References:** 1. Tu L, *et al.* 1996. *J. Immunol.* 157:3995  
2. Zhang Y and S. Neelamegham. 2002. *Biophys. J.* 83:1934

**Description:** CD62E (also known as E-selectin, ELAM-1, and LECAM-1) is a 115 kD type I membrane protein and a member of the selectin family. CD62E is highly expressed on activated endothelial cells (IL-2, TNF- $\alpha$ , other cytokines can increase expression) and can also be expressed on endothelial cells in the skin, bone marrow and placenta. CD62E is involved in tethering and leucocyte rolling on activated endothelium at inflammatory sites and may also play a role in tumor metastasis and angiogenesis. CD62E binds to both Sialyl Lewis X (CD15s) and PSGL-1 (CD162). The HAE-1f antibody has been shown to recognize human CD62E and to be useful for flow cytometry and in vitro blocking.

**Antigen References:** 1. Collins T, *et al.* 1991. *J. Biol. Chem.* 266:2466  
2. Bevilacqua MP, *et al.* 1987. *Proc. Natl. Acad. Sci. USA* 84:9238  
3. Berg EL, *et al.* 1991. *J. Exp. Med.* 174:1461.  
4. Lawrence MB, *et al.* 1993. *J. Immunol.* 151:6338.  
5. Walz G, *et al.* 1990. *Science* 250:1132

### Related Products:

**Product**  
APC Mouse IgG1,  $\kappa$  Isotype Ctrl (FC)  
Cell Staining Buffer  
RBC Lysis Buffer (10X)  
Human TruStain FcX™ (Fc Receptor Blocking Solution)

**Clone**  
MOPC-21

**Application**  
FC  
FC, ICC, ICFC  
FC, ICFC  
FC, ICC, ICFC



For research use only. Not for diagnostic use. Not for resale. BioLegend will not be held responsible for patent infringement or other violations that may occur with the use of our products.



\*These products may be covered by one or more Limited Use Label Licenses (see the BioLegend Catalog or our website, [www.biolegend.com/ordering#license](http://www.biolegend.com/ordering#license)). BioLegend products may not be transferred to third parties, resold, modified for resale, or used to manufacture commercial products, reverse engineer functionally similar materials, or to provide a service to third parties without written approval of BioLegend. By use of these products you accept the terms and conditions of all applicable Limited Use Label Licenses. Unless otherwise indicated, these products are for research use only and are not intended for human or animal diagnostic, therapeutic or commercial use.