

Product Data Sheet

FITC anti-human CD68

Catalog # / Size: 333805 / 25 tests
333806 / 100 tests

Clone: Y1/82A

Isotype: Mouse IgG2b, κ

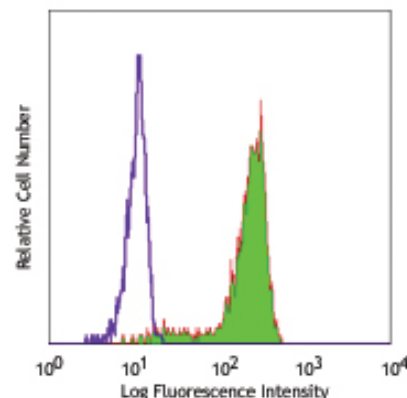
Workshop Number: VI MR23

Reactivity: Human

Preparation: The antibody was purified by affinity chromatography, and conjugated with FITC under optimal conditions. The solution is free of unconjugated FITC.

Formulation: Phosphate-buffered solution, pH 7.2, containing 0.09% sodium azide and 0.2% (w/v) BSA (origin USA).

Storage: The antibody solution should be stored undiluted at 4°C and protected from prolonged exposure to light. **Do not freeze.**



Human peripheral blood monocytes intracellularly stained with Y1/82A FITC

Applications:

Applications: ICFC - *Quality tested*

Recommended Usage: Each lot of this antibody is quality control tested by intracellular immunofluorescent staining with flow cytometric analysis. **Test size products are transitioning from 20 μ l to 5 μ l per test.** Please check your vial or your CoA to find the suggested use of this reagent per million cells in 100 μ l staining volume or per 100 μ l of whole blood. It is recommended that the reagent be titrated for optimal performance for each application. Read more at www.biolegend.com/testsize regarding the test size change.

Application Notes: Additional reported application: immunohistochemical staining of frozen tissue sections

Application References:

1. Doussis IA, *et al.* 1993. *J. Clin. Pathol.* 46:334.
2. Davey FR, *et al.* 1988. *J. Clin. Pathol.* 41:753.
3. Dalli J, *et al.* 2012. *Blood*. 120:e60. PubMed.
4. Rao G, *et al.* 2013. *Clin Cancer Res.* 19:785. PubMed.

Description: CD68 is a 110 kD glycoprotein, known as macrophage, belongs to sialomucin family and is closely related to the family of acidic, highly glycosylated lysosomal-associated membrane proteins (lamps). CD68 is predominately expressed in cytoplasmic granules of monocytes/macrophages, dendritic cells, and granulocytes. It is one of the useful myeloid cell markers. Further studies have shown that CD68 is also expressed by a subset of hematopoietic progenitors, gamma/delta T cells, NK cells, LAK cells, subset of B cells, fibroblasts, and endothelial cells. The biological function of CD68 is still unknown.

Antigen References:

1. Holness CL and Simmons DL. 1993. *Blood* 81:1607.
2. Gottfried E, *et al.* 2008. *Scand. J. Immunol.* 67:453.
3. Hameed A, *et al.* 1994. *Hum. Pathol.* 25:872.

Related Products:

Product	Clone	Application
FITC Mouse IgG2b, κ Isotype Ctrl	MPC-11	FC, ICFC
Cell Staining Buffer		FC, ICC, ICFC
RBC Lysis Buffer (10X)		FC, ICFC
Permeabilization Wash Buffer (10X)		ICC, ICFC, IHC
Human TruStain FcX™ (Fc Receptor Blocking Solution)		FC, ICC, ICFC



For research use only. Not for diagnostic use. Not for resale. BioLegend will not be held responsible for patent infringement or other violations that may occur with the use of our products.



*These products may be covered by one or more Limited Use Label Licenses (see the BioLegend Catalog or our website, www.biolegend.com/ordering#license). BioLegend products may not be transferred to third parties, resold, modified for resale, or used to manufacture commercial products, reverse engineer functionally similar materials, or to provide a service to third parties without written approval of BioLegend. By use of these products you accept the terms and conditions of all applicable Limited Use Label Licenses. Unless otherwise indicated, these products are for research use only and are not intended for human or animal diagnostic, therapeutic or commercial use.