

Product Data Sheet

PE/Cy7 anti-human CD62L

Catalog # / Size: 304821 / 25 tests
304822 / 100 tests

Clone: DREG-56

Isotype: Mouse IgG1, κ

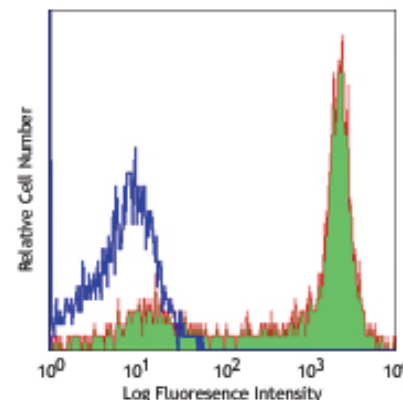
Workshop Number: V S056

Reactivity: Human, **Cross-Reactivity:** Chimpanzee, Cattle (Bovine, Cow)

Preparation: The antibody was purified by affinity chromatography, and conjugated with PE/Cy7 under optimal conditions. The solution is free of unconjugated PE/Cy7 and unconjugated antibody.

Formulation: Phosphate-buffered solution, pH 7.2, containing 0.09% sodium azide and 0.2% (w/v) BSA (origin USA).

Storage: The antibody solution should be stored undiluted at 4°C and protected from prolonged exposure to light. **Do not freeze.**



Human peripheral blood lymphocytes stained with DREG-56 PE/Cy7

Applications:

Applications: FC - Quality tested

Recommended Usage: Each lot of this antibody is quality control tested by immunofluorescent staining with flow cytometric analysis. **Test size products are transitioning from 20 μ l to 5 μ l per test.** Please check your vial or your CoA to find the suggested use of this reagent per million cells in 100 μ l staining volume or per 100 μ l of whole blood. It is recommended that the reagent be titrated for optimal performance for each application. Read more at www.biolegend.com/testsize regarding the test size change.

Application Notes: Additional reported applications (for the relevant formats) include: immunohistochemical staining of acetone-fixed frozen tissue sections, Western blotting^{2,3}, and *in vitro* blocking of lymphocytes binding to high endothelial venules (HEV)². The LEAF™ Purified antibody (Endotoxin <0.1 EU/ μ g, Azide-Free, 0.2 μ m filtered) is recommended for functional assays (Cat. No. 304812).

Cy3, Cy5, Cy5.5 and Cy7 are subject to proprietary rights of GE Healthcare Bio-Sciences Corp. and Carnegie Mellon University and made and sold under license from GE Healthcare Bio-Sciences Corp. Sale of this product is licensed for research use only.

- Application References:**
- Schlossman S, *et al.* Eds. 1995. Leucocyte Typing V. Oxford University Press. New York.
 - Kishimoto T, *et al.* 1990. *P. Natl. Acad. Sci. USA* 87:2244. (WB, Block)
 - Jutila M, *et al.* 2002. *J. Immunol.* 169:1768. (WB)
 - Tamassia N, *et al.* 2008. *J. Immunol.* 181:6563. (FC) PubMed
 - Kmieciak M, *et al.* 2009. *J. Transl. Med.* 7:89. (FC) PubMed
 - Thakral D, *et al.* 2008. *J. Immunol.* 180:7431. (FC) PubMed
 - Charles N, *et al.* 2010. *Nat. Med.* 16:701. (FC) PubMed
 - Yoshino N, *et al.* 2000. *Exp. Anim. (Tokyo)* 49:97. (FC)
 - Koenig JM, *et al.* 1996. *Pediatr. Res.* 39:616. (WB)
 - Shi C, *et al.* 2011. *J. Immunol.* 187:5293. PubMed

Description: CD62L is a 74-95 kD single chain type I glycoprotein referred to as L-selectin or LECAM-1. It is expressed on most peripheral blood B cells, subsets of T and NK cells, monocytes, granulocytes, and certain hematopoietic malignant cells. CD62L binds to carbohydrates present on certain glycoforms of CD34, glycamin-1, and MAdCAM-1 and with a low affinity to anionic oligosaccharide sequences related to sialylated Lewis x (sLex, CD15s) through its C-type lectin domain. CD62L is important for the homing of naive lymphocytes to high endothelial venules in peripheral lymph nodes and Peyer's patches. It also plays a role in leukocyte rolling on activated endothelial cells.

- Antigen References:**
- Kishimoto T, *et al.* 1990. *P. Natl. Acad. Sci. USA* 87:2244.
 - Kishimoto T, *et al.* 1991. *Blood* 78:805.

Related Products:

Product
Cell Staining Buffer
PE/Cy7 Mouse IgG1, κ Isotype Ctrl
Human TruStain FcX™ (Fc Receptor Blocking Solution)

Clone

MOPC-21

Application

FC, ICC, ICFC
FC, ICFC
FC, ICC, ICFC



For research use only. Not for diagnostic use. Not for resale. BioLegend will not be held responsible for patent infringement or other violations that may occur with the use of our products.



*These products may be covered by one or more Limited Use Label Licenses (see the BioLegend Catalog or our website, www.biolegend.com/ordering#license). BioLegend products may not be transferred to third parties, resold, modified for resale, or used to manufacture commercial products, reverse engineer functionally similar materials, or to provide a service to third parties without written approval of BioLegend. By use of these products you accept the terms and conditions of all applicable Limited Use Label Licenses. Unless otherwise indicated, these products are for research use only and are not intended for human or animal diagnostic, therapeutic or commercial use.