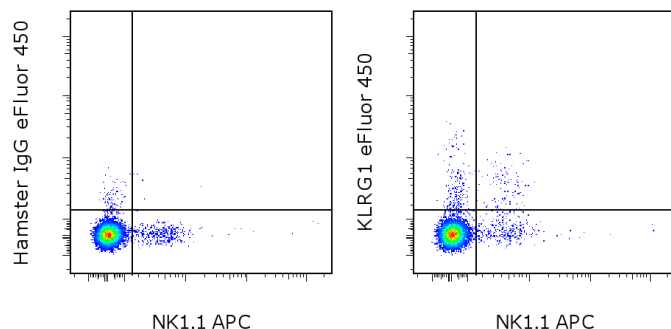


Anti-Mouse KLRG1 eFluor® 450

Catalog Number: 48-5893

Also known as: MAFA

RUO: For Research Use Only. Not for use in diagnostic procedures.



Staining of C57Bl/6 splenocytes with Anti-Mouse NK1.1 APC (cat. 17-5941) and 0.125 ug of Golden Syrian Hamster IgG Isotype Control eFluor® 450 (cat. 48-4914) (left) or 0.125 ug of Anti-Mouse KLRG1 eFluor® 450 (right). Total viable cells were used for analysis.

Product Information



Contents: Anti-Mouse KLRG1 eFluor® 450

Catalog Number: 48-5893

Clone: 2F1

Concentration: 0.2 mg/mL

Host/Isotype: Golden Syrian Hamster IgG



Formulation: aqueous buffer, 0.09% sodium azide, may contain carrier protein/stabilizer

Temperature Limitation: Store at 2-8°C. Do not freeze. Light-sensitive material.

Batch Code: Refer to vial

Use By: Refer to vial



Description

This 2F1 monoclonal antibody reacts with the mouse Killer cell Lectin-like Receptor G1 (KLRG1), also known as Mast cell Function-associated Antigen (MAFA). KLRG1 is a homodimer of glycosylated 30-38 kDa subunits and contains a cytoplasmic motif similar to the immunoreceptor tyrosine-based inhibitory motif (ITIM). Rat MAFA was identified as an antigen specific to rat mast cells; however, the expression of mouse KLRG1/MAFA using 2F1 has not been detected on the surface of mouse mast cell lines, bone marrow-derived mast cells, or peritoneal mast cells. This antigen is expressed on approximately one-third of mouse NK cells and a subset of T cells. MHC class I molecules regulate KLRG1 via interactions with class I-specific inhibitory Ly49 molecules and SHP-1 signaling. Although KLRG1 and Ly49 are both lectin-like inhibitory receptors that are regulated by class I MHC expression, the effects of this on cell surface expression of these molecules are opposing, and the underlying regulatory mechanisms distinct.

Applications Reported

This 2F1 antibody has been reported for use in flow cytometric analysis.

Applications Tested

This 2F1 antibody has been tested by flow cytometric analysis of mouse splenocytes. This can be used at less than or equal to 0.25 µg per test. A test is defined as the amount (µg) of antibody that will stain a cell sample in a final volume of 100 µL. Cell number should be determined empirically but can range from 10⁵ to 10⁸ cells/test. It is recommended that the antibody be carefully titrated for optimal performance in the assay of interest.

eFluor® 450 is a replacement for Pacific Blue®. eFluor® 450 emits at 456 nm and is excited with the Violet laser (405 nm). Please make sure that your instrument is capable of detecting this fluorochrome.

References

Beyersdorf NB, Ding X, Karp K, Hanke T. 2001. Expression of inhibitory "killer cell lectin-like receptor G1" identifies unique subpopulations of effector and memory CD8 T cells. *Eur J Immunol.* 31:3443-52.

Voehringer D, Blaser C, Brawand P, Raulet DH, Hanke T, Pircher H. 2001. Viral infections induce abundant numbers

Not for further distribution without written consent.

Copyright © 2000-2012 eBioscience, Inc.

Tel: 888.999.1371 or 858.642.2058 • Fax: 858.642.2046 • www.ebioscience.com •
info@ebioscience.com

Anti-Mouse KLRG1 eFluor® 450

Catalog Number: 48-5893

Also known as: MAFA

RUO: For Research Use Only. Not for use in diagnostic procedures.

of senescent CD8 T cells. J Immunol. 167:4838-43.

Corral L, Hanke T, Vance RE, Cado D, Raulet DH. 2000. NK cell expression of the killer cell lectin-like receptor G1 (KLRG1), the mouse homolog of MAFA, is modulated by MHC class I molecules. Eur J Immunol. 30:920-30

Related Products

17-5941 Anti-Mouse NK1.1 APC (PK136)

48-4914 Golden Syrian Hamster IgG Isotype Control eFluor® 450 (n/a)