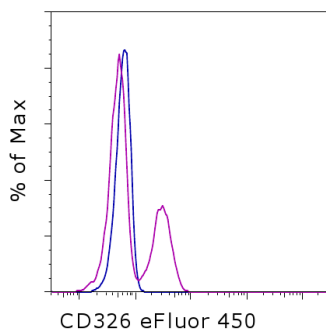


## Anti-Mouse CD326 (EpCAM) eFluor® 450

**Catalog Number:** 48-5791

**Also known as:** epithelial cell adhesion molecule

**RUO: For Research Use Only. Not for use in diagnostic procedures.**



Staining of the TE-71 cell line with 0.5 ug of Rat IgG2a K Isotype Control eFluor® 450 (cat. 48-4321) (blue histogram) or 0.5 ug of Anti-Mouse CD326 (EpCAM) eFluor® 450 (purple histogram). Total viable cells were used for analysis.

### Product Information

**Contents:** Anti-Mouse CD326 (EpCAM) eFluor® 450

**Catalog Number:** 48-5791

**Clone:** G8.8

**Concentration:** 0.2 mg/mL

**Host/Isotype:** Rat IgG2a, kappa

**Formulation:** aqueous buffer, 0.09% sodium azide, may contain carrier protein/stabilizer

**Temperature Limitation:** Store at 2-8°C. Do not freeze. Light-sensitive material.

**Batch Code:** Refer to vial

**Use By:** Refer to vial

### Description

The G8.8 monoclonal antibody reacts with the 40 kDa protein mouse EpCAM (epithelial cellular adhesion molecule), also known as EGP40 (epithelial glycoprotein 40), 17-1A antigen, TACSTD1 (tumor-associated calcium signal transducer 1), and CD326. The immunogen used to generate the G8.8 antibody was the TE-71 thymic epithelial cell line. CD326 is expressed on the majority of epithelial cells, and is considered a pan-carcinoma antigen. CD326 mediates calcium-independent, homophilic, cell-cell adhesion and may function as a growth factor receptor. The antigen is being used as a target for immunotherapy treatment of human carcinomas. CD326 binds LAIR-1 (CD305) and LAIR-2 (CD306) to inhibit cellular activation and inflammation. This epithelial glycoprotein is now recognized as having an important role in tumor biology.

### Applications Reported

This G8.8 antibody has been reported for use in flow cytometric analysis.

### Applications Tested

This G8.8 antibody has been tested by flow cytometric analysis of the TE-71 cell line. This can be used at less than or equal to 1 µg per test. A test is defined as the amount (µg) of antibody that will stain a cell sample in a final volume of 100 µL. Cell number should be determined empirically but can range from 10<sup>5</sup> to 10<sup>8</sup> cells/test. It is recommended that the antibody be carefully titrated for optimal performance in the assay of interest.

**eFluor® 450 is a replacement for Pacific Blue®. eFluor® 450 emits at 456 nm and is excited with the Violet laser (405 nm). Please make sure that your instrument is capable of detecting this fluorochrome.**

### References

Farr A, Nelson A, Truex J, Hosier S. Epithelial heterogeneity in the murine thymus: a cell surface glycoprotein expressed by subcapsular and medullary epithelium. J Histochem Cytochem. 1991 May;39(5):645-53. (**G8.8**, FC, IHC, IP, PubMed)

Borkowski TA, Nelson AJ, Farr AG, Udey MC. Expression of gp40, the murine homologue of human epithelial cell

Not for further distribution without written consent.

Copyright © 2000-2012 eBioscience, Inc.

Tel: 888.999.1371 or 858.642.2058 • Fax: 858.642.2046 • [www.ebioscience.com](http://www.ebioscience.com) • [info@ebioscience.com](mailto:info@ebioscience.com)

---

## **Anti-Mouse CD326 (EpCAM) eFluor® 450**

**Catalog Number:** 48-5791

**Also known as:** epithelial cell adhesion molecule

**RUO: For Research Use Only. Not for use in diagnostic procedures.**

---

adhesion molecule (Ep-CAM), by murine dendritic cells. Eur J Immunol. 1996 Jan;26(1):110-4. PubMed)

Nelson AJ, Dunn RJ, Peach R, Aruffo A, Farr AG. The murine homolog of human Ep-CAM, a homotypic adhesion molecule, is expressed by thymocytes and thymic epithelial cells. Eur J Immunol. 1996 Feb;26(2):401-8. (PubMed)

Dooley J, Erickson M, Farr AG. An organized medullary epithelial structure in the normal thymus expresses molecules of respiratory epithelium and resembles the epithelial thymic rudiment of nude mice. J Immunol. 2005 Oct 1;175(7):4331-7. (G8.8, FC, IHC, PubMed)

### **Related Products**

48-4321 Rat IgG2a K Isotype Control eFluor® 450 (eBR2a)