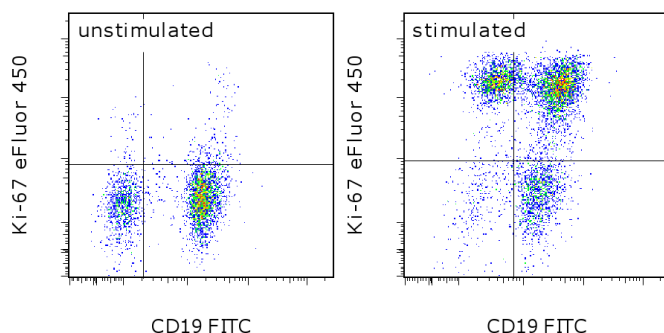


Anti-Mouse/Rat Ki-67 eFluor® 450

Catalog Number: 48-5698

Also known as: Ki-67, mki67

RUO: For Research Use Only. Not for use in diagnostic procedures.



C57Bl/6 splenocytes were unstimulated (left) or stimulated for 2 days with Anti-Mouse CD3 Functional Grade Purified (cat. 16-0031) (right). Cells were surface stained with Anti-Mouse CD19 FITC (cat. 11-0193) then fixed and permeabilized with the Foxp3 Staining Buffer Set (cat. 00-5523) and intracellularly stained with 0.06 µg of Anti-Mouse/Rat Ki-67 eFluor® 450. Total viable cells, as determined by Fixable Viability Dye eFluor® 780 (cat. 65-0865), were used for analysis.

Product Information



Contents: Anti-Mouse/Rat Ki-67 eFluor® 450

Catalog Number: 48-5698

Clone: SolA15

Concentration: 0.2 mg/mL

Host/Isotype: Rat IgG2a, kappa



Formulation: aqueous buffer, 0.09% sodium azide, may contain carrier protein/stabilizer

Temperature Limitation: Store at 2-8°C. Do not freeze. Light-sensitive material.

Batch Code: Refer to vial

Use By: Refer to vial

Contains sodium azide

Description

The monoclonal antibody SolA15 recognizes mouse and rat Ki-67, a 300 kDa nuclear protein. Ki-67 is present during all active phases of the cell cycle (G1, S, G2, and mitosis), but is absent from resting cells (G0). Ki-67 is detected within the nucleus during interphase but redistributes to the chromosomes during mitosis. Ki-67 is used as a marker for determining the growth fraction of a given population of cells. In studies of tumor cells, the "Ki-67 labeling index" refers to the number of Ki-67 positive cells within the population and this is used to predict outcome of particular cancer types. Ki-67 has been shown to interact with the DNA-bound protein chromobox protein homolog 3 (CBX3) (heterochromatin).

The SolA15 antibody also recognizes human and canine Ki-67.

Applications Reported

This SolA15 antibody has been reported for use in intracellular staining followed by flow cytometric analysis.

Applications Tested

This SolA15 antibody has been tested by intracellular staining and flow cytometric analysis of stimulate dmouse splenocytes using the Foxp3 Staining Buffer Set (cat. 00-5523). This can be used at less than or equal to 0.125 µg per test. A test is defined as the amount (µg) of antibody that will stain a cell sample in a final volume of 100 µL. Cell number should be determined empirically but can range from 10⁵ to 10⁸ cells/test. It is recommended that the antibody be carefully titrated for optimal performance in the assay of interest.

eFluor® 450 is a replacement for Pacific Blue®. eFluor® 450 emits at 456 nm and is excited with the Violet laser (405 nm). Please make sure that your instrument is capable of detecting this fluorochrome.

References

Schaefer JS, Montufar-Solis D, Nakra N, Vigneswaran N, Klein JR. Small intestine inflammation in roquin-mutant and roquin-deficient mice. *PLoS One*. 2013;8(2):e56436. doi: 10.1371/journal.pone.0056436. (**Sola15**, FC, PubMed)

Not for further distribution without written consent.

Copyright © 2000-2012 eBioscience, Inc.

Tel: 888.999.1371 or 858.642.2058 • Fax: 858.642.2046 • www.ebioscience.com • info@ebioscience.com

Anti-Mouse/Rat Ki-67 eFluor® 450

Catalog Number: 48-5698

Also known as: KI-67, mki67

RUO: For Research Use Only. Not for use in diagnostic procedures.

Starborg M, Gell K, Brundell E, Höög C. The murine Ki-67 cell proliferation antigen accumulates in the nucleolar and heterochromatic regions of interphase cells and at the periphery of the mitotic chromosomes in a process essential for cell cycle progression. J Cell Sci. 1996 Jan;109 (Pt 1):143-53.

Related Products

00-5523 Foxp3 / Transcription Factor Staining Buffer Set

11-0193 Anti-Mouse CD19 FITC (eBio1D3 (1D3))

16-0031 Anti-Mouse CD3e Functional Grade Purified (145-2C11)

48-4321 Rat IgG2a K Isotype Control eFluor® 450 (eBR2a)

65-0865 Fixable Viability Dye eFluor® 780