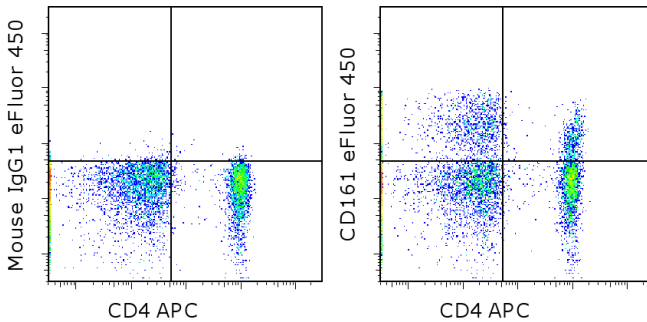


Anti-Human CD161 eFluor[®] 450

Catalog Number: 48-1619

Also known as: NKR-P1A

RUO: For Research Use Only. Not for use in diagnostic procedures.



Staining of normal human peripheral blood cells with Anti-Human CD4 APC (cat. 17-0049) and Mouse IgG1 K Isotype Control eFluor[®] 450 (cat. 48-4714) (left) or Anti-Human CD161 eFluor[®] 450 (right). Cells in the lymphocyte gate were used for analysis.

Product Information



Contents: Anti-Human CD161 eFluor[®] 450

Catalog Number: 48-1619

Clone: HP-3G10

Concentration: 5 μ L (0.25 μ g)/test

Host/Isotype: Mouse IgG1



Formulation: aqueous buffer, 0.09% sodium azide, may contain carrier protein/stabilizer

Temperature Limitation: Store at 2-8°C. Do not freeze. Light-sensitive material.



Batch Code: Refer to vial



Use By: Refer to vial

Description

This HP-3G10 monoclonal antibody reacts with CD161 (also known as NKR-P1A), a member of the C-type lectin superfamily. The human homologue of NK1.1 in C57BL/6 mice, CD161 is expressed on natural killer cells and is upregulated in response to IL-12. CD161 can also be detected on various T cell subsets, including memory/effector CD4⁺ T cells, CD8⁺ T cells, gamma delta TCR T cells, and a subset of CD3⁺ thymocytes. Finally, CD161 expression has been demonstrated on human Th17 CD4⁺ T cells. The function of this receptor is unclear although studies suggest a possible stimulatory role. Nevertheless, Lectin-like transcript-1 (LLT1), which is also known as osteoclast inhibitory lectin, has been identified as the ligand for CD161.

Applications Reported

This HP-3G10 antibody has been reported for use in flow cytometric analysis.

Applications Tested

This HP-3G10 antibody has been pre-titrated and tested by flow cytometric analysis of normal human peripheral blood cells. This can be used at 5 μ L (0.25 μ g) per test. A test is defined as the amount (μ g) of antibody that will stain a cell sample in a final volume of 100 μ L. Cell number should be determined empirically but can range from 10⁵ to 10⁸ cells/test.

eFluor[®] 450 is a replacement for Pacific Blue[®]. eFluor[®] 450 emits at 456 nm and is excited with the Violet laser (405 nm). Please make sure that your instrument is capable of detecting this fluorochrome.

References

Cossmi, L, et al. Human interleukin 17-producing cells originate from a CD161+CD4⁺ T cell precursor. J. Exp. Med. 2008; 205(8): 1903-16.

Rosen DB, Cao W, Avery DT, Tangye SG, Liu YJ, Houchins JP, Lanier LL. Functional consequences of interactions between human NKR-P1A and its ligand LLT1 expressed on activated dendritic cells and B cells. J. Immunol. 2008 May 15; 180(10):6508-17.

Not for further distribution without written consent.

Copyright © 2000-2012 eBioscience, Inc.

Tel: 888.999.1371 or 858.642.2058 • Fax: 858.642.2046 • www.ebioscience.com •
info@ebioscience.com

Anti-Human CD161 eFluor® 450

Catalog Number: 48-1619

Also known as: NKRP1A

RUO: For Research Use Only. Not for use in diagnostic procedures.

Márquez C, Trigueros C, Franco JM, Ramiro AR, Carrasco YR, López-Botet M, Toribio ML. Identification of a common developmental pathway for thymic natural killer cells and dendritic cells. *Blood*. 1998 Apr 15;91(8):2760-71. (HP-3G10, FC, Pubmed)

Related Products

17-0049 Anti-Human CD4 APC (RPA-T4)

48-4714 Mouse IgG1 K Isotype Control eFluor® 450 (P3.6.2.8.1)

Not for further distribution without written consent.

Copyright © 2000-2012 eBioscience, Inc.

Tel: 888.999.1371 or 858.642.2058 • Fax: 858.642.2046 • www.ebioscience.com •
info@ebioscience.com