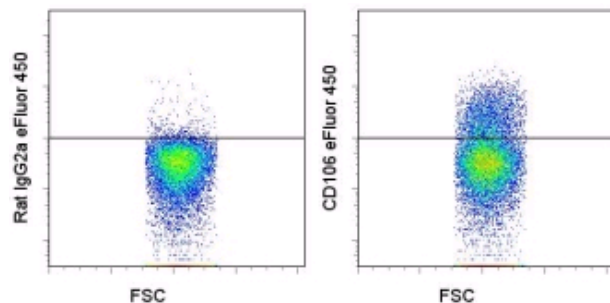


## Anti-Mouse CD106 (VCAM-1) eFluor® 450 (Pacific Blue® replacement)

Catalog Number: 48-1061

Also Known As: VCAM1, vascular cell adhesion molecule-1


RUO: For Research Use Only



Staining of BALB/c bone marrow cells with 0.125 µg of Rat IgG2a κ Isotype Control eFluor® 450 (cat. 48-4321) (left) or 0.125 µg of Anti-Mouse CD106 (VCAM-1) eFluor® 450 (right). Cells in the large scatter population were used for analysis.

### Product Information

Contents: Anti-Mouse CD106 (VCAM-1) eFluor® 450 (Pacific Blue® replacement)


 Catalog Number: 48-1061

Clone: 429

Concentration: 0.2 mg/ml


Host/Isotype: Rat IgG2a, κ

Formulation: aqueous buffer, 0.09% sodium azide, may contain carrier protein/stabilizer

 Temperature Limitation: Store at 2-8°C. Do not freeze. Light sensitive material.

 Batch Code: Refer to Vial

 Use By: Refer to Vial

 Caution, contains Azide

### Description

The 429 monoclonal antibody reacts with mouse CD106 (Vascular Cell Adhesion Molecule-1, VCAM-1), a 110 kDa transmembrane glycoprotein expressed by myeloid lineage and bone marrow stromal cells. Endothelial cells constitutively express low levels of CD106 and upregulate it upon cytokine stimulation. CD106 binds to integrin  $\alpha_4\beta_1$  (VLA-4, CD49d/CD29) and Integrin  $\alpha_4\beta_7$  (LPAM-1) and these interactions in the bone marrow and thymus are important for early lymphocyte and myeloid development. Cytokine-mediated upregulation of CD106 on endothelial cells suggests a role for this antigen in the inflammatory response.

### Applications Reported

This 429 antibody has been reported for use in flow cytometric analysis.

eFluor® 450 is a replacement for Pacific Blue®. eFluor® 450 emits at 456 nm and is excited with the Violet laser. Please make sure that your instrument is capable of detecting this fluorochrome.

### Applications Tested

This 429 antibody has been tested by flow cytometric analysis of mouse bone marrow cells. This can be used at less than or equal to 0.25 µg per test. A test is defined as the amount (µg) of antibody that will stain a cell sample in a final volume of 100 µL. Cell number should be determined empirically but can range from  $10^5$  to  $10^8$  cells/test. It is recommended that the antibody be carefully titrated for optimal performance in the assay of interest.

eFluor™ 450 is a replacement for Pacific Blue®. eFluor™ 450 emits at 456 nm and is excited with the Violet laser (405 nm). Please make sure that your instrument is capable of detecting this fluorochrome.

### References

Kinashi, T., Y. St. Pierre, et al. (1995). Expression of glycosphosphatidylinositol-anchored and -non-anchored isoforms of vascular cell adhesion molecule 1 in murine stromal and endothelial cells. *J Leukoc Biol* 57(1): 168-73.

### Related Products

11-4801 Anti-Mouse F4/80 Antigen FITC (BM8)

48-4321 Rat IgG2a K Isotype Control eFluor® 450 (Pacific Blue® replacement)

93-0112 Anti-Mouse CD11b eFluor® 605NC (M1/70)

---

Not for further distribution without written consent.

Copyright © 2000-2010 eBioscience, Inc.

Tel: 888.999.1371 or 858.642.2058 • Fax: 858.642.2046 • [www.eBioscience.com](http://www.eBioscience.com) • [info@eBioscience.com](mailto:info@eBioscience.com)