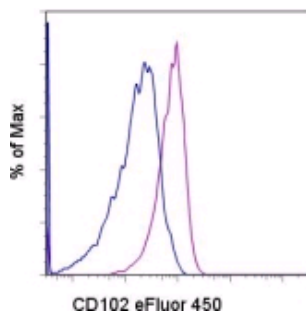


## Anti-Mouse CD102 (ICAM-2) eFluor<sup>®</sup> 450 (Pacific Blue<sup>®</sup> replacement)

Catalog Number: 48-1021

Also Known As: ICAM2, Ly-60

RUO: For Research Use Only



Staining of C57BL/6 splenocytes with 0.5 µg of Rat IgG2a κ Isotype Control eFluor<sup>®</sup> 450 (cat. 48-4321) (blue histogram) or 0.5 µg of Anti-Mouse CD102 (ICAM-2) eFluor<sup>®</sup> 450 (purple histogram). Total viable cells were used for analysis.

### Product Information

Contents: Anti-Mouse CD102 (ICAM-2) eFluor<sup>®</sup> 450 (Pacific Blue<sup>®</sup> replacement)


**REF** Catalog Number: 48-1021

Clone: 3C4 (mIC2/4)


Concentration: 0.2 mg/ml

Host/Isotype: Rat IgG2a, κ

Formulation: aqueous buffer, 0.09% sodium azide, may contain carrier protein/stabilizer

 Temperature Limitation: Store at 2-8°C. Do not freeze. Light sensitive material.

**LOT** Batch Code: Refer to Vial

 Use By: Refer to Vial

 Caution, contains Azide

### Description

The monoclonal antibody 3C4 (mIC2/4) recognizes mouse CD102, also known as intercellular adhesion molecule-2 (ICAM-2). CD102, a member of the Immunoglobulin superfamily of receptors with 2 extracellular Ig domains, binds LFA (CD11a/CD18) and Mac-1 (CD11b/CD18), thereby mediating cellular interactions to lymphocytes. CD102 plays a role in NK cytotoxicity and migration, and lymphocyte recirculation. Expression of CD102 is found on most lymphocytes, monocytes and platelets.

The 3C4 (mIC2/4) antibody blocks interaction of lymphocytes with antigen presenting cells.

### Applications Reported

This 3C4 (mIC2/4) antibody has been reported for use in flow cytometric analysis.

eFluor<sup>®</sup> 450 is a replacement for Pacific Blue<sup>®</sup>. eFluor<sup>®</sup> 450 emits at 456 nm and is excited with the Violet laser. Please make sure that your instrument is capable of detecting this fluorochrome.

### Applications Tested

This 3C4 (mIC2/4) antibody has been tested by flow cytometric analysis of mouse splenocytes. This can be used at less than or equal to 1 µg per test. A test is defined as the amount (µg) of antibody that will stain a cell sample in a final volume of 100 µL. Cell number should be determined empirically but can range from 10<sup>5</sup> to 10<sup>8</sup> cells/test. It is recommended that the antibody be carefully titrated for optimal performance in the assay of interest.

eFluor<sup>™</sup> 450 is a replacement for Pacific Blue<sup>®</sup>. eFluor<sup>™</sup> 450 emits at 456 nm and is excited with the Violet laser (405 nm). Please make sure that your instrument is capable of detecting this fluorochrome.

### References

Gerwin N, Gonzalo JA, Lloyd C, Coyle AJ, Reiss Y, Banu N, Wang B, Xu H, Avraham H, Engelhardt B, Springer TA, Gutierrez-Ramos JC. Prolonged eosinophil accumulation in allergic lung interstitium of ICAM-2 deficient mice results in extended hyperresponsiveness. *Immunity*. 1999 Jan;10(1):9-19. (3C4, FC, IHC/IF, PubMed)

Xu H, Bickford JK, Luther E, Carpenito C, Takei F, Springer TA. Characterization of murine intercellular adhesion molecule-2. *J Immunol*. 1996 Jun 15;156(12):4909-14. (3C4, mAb characterization, IP, FA, PubMed)

### Related Products

Not for further distribution without written consent.

Copyright © 2000-2010 eBioscience, Inc.

Tel: 888.999.1371 or 858.642.2058 • Fax: 858.642.2046 • [www.eBioscience.com](http://www.eBioscience.com) • [info@eBioscience.com](mailto:info@eBioscience.com)