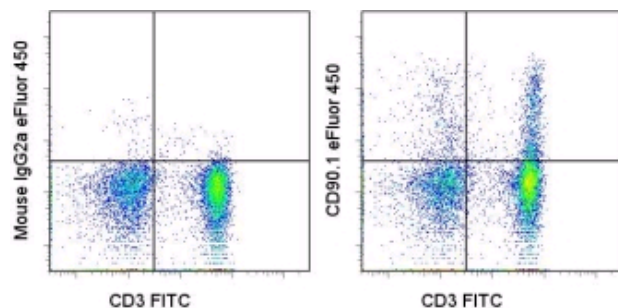


Anti-Mouse/Rat CD90.1 (Thy-1.1) eFluor® 450 (Pacific Blue® replacement)

Catalog Number: 48-0900

Also Known As: Thy1.1

RUO: For Research Use Only



Staining of rat splenocytes with Anti-Rat CD3 FITC (cat. 11-0030) and 0.125 µg of Mouse IgG2a κ Isotype Control eFluor® 450 (cat. 48-4724) (left) or 0.125 µg of Anti-Mouse/Rat CD90.1 (Thy-1.1) eFluor® 450 (right). Total viable cells were used for analysis.

Product Information

Contents: Anti-Mouse/Rat CD90.1 (Thy-1.1) eFluor® 450 (Pacific Blue® replacement)


REF Catalog Number: 48-0900

Clone: HIS51

Concentration: 0.2 mg/ml


Host/Isotype: Mouse IgG2a, κ

Formulation: aqueous buffer, 0.09% sodium azide, may contain carrier protein/stabilizer

 Temperature Limitation: Store at 2-8°C. Do not freeze. Light sensitive material.

LOT Batch Code: Refer to Vial

 Use By: Refer to Vial

 Caution, contains Azide

Description

The HIS51 monoclonal antibody reacts with rat CD90 and cross-reacts with mouse CD90.1, a GPI-linked membrane molecule. In the rat, CD90 is expressed by hematopoietic stem cells, immature B cells, thymocytes, recent thymic emigrants, neurons, inflamed endothelia and other cell types. In the CD90.1-expressing mouse strains, PL and AKR, CD90 is expressed by early hematopoietic cells in the bone marrow, thymocytes and mature T cells.

Applications Reported

This HIS51 antibody has been reported for use in flow cytometric analysis.

eFluor® 450 is a replacement for Pacific Blue®. eFluor® 450 emits at 456 nm and is excited with the Violet laser (405 nm). Please make sure that your instrument is capable of detecting this fluorochrome.

Applications Tested

This HIS51 antibody has been tested by flow cytometric analysis of rat splenocytes. This can be used at less than or equal to 0.25 µg per test. A test is defined as the amount (µg) of antibody that will stain a cell sample in a final volume of 100 µL. Cell number should be determined empirically but can range from 10⁵ to 10⁸ cells/test. It is recommended that the antibody be carefully titrated for optimal performance in the assay of interest.

eFluor™ 450 is a replacement for Pacific Blue®. eFluor™ 450 emits at 456 nm and is excited with the Violet laser (405 nm). Please make sure that your instrument is capable of detecting this fluorochrome.

References

- Kroese, F. G., N. K. de Boer, et al. 1995. Identification and kinetics of two recently bone marrow-derived B cell populations in peripheral lymphoid tissues. *Cell Immunol* 162(2): 185-93.
- Hosseinzadeh, H. and I. Goldschneider 1993. Recent thymic emigrants in the rat express a unique antigenic phenotype and undergo post-thymic maturation in peripheral lymphoid tissues. *J Immunol* 150(5): 1670-9.
- Ishizu, A., H. Ishikura, et al. 1995. Thy-1 induced on rat endothelium regulates vascular permeability at sites of inflammation. *Int Immunol* 7 (12): 1939-47.
- Hermans, M. H. and D. Opstelten 1991. In situ visualization of hemopoietic cell subsets and stromal elements in rat and mouse bone marrow by immunostaining of frozen sections. *J Histochem Cytochem* 39(12): 1627-34.

Related Products

48-4724 Mouse IgG2a K Isotype Control eFluor® 450 (Pacific Blue® replacement)

Not for further distribution without written consent.

Copyright © 2000-2010 eBioscience, Inc.

Tel: 888.999.1371 or 858.642.2058 • Fax: 858.642.2046 • www.eBioscience.com • info@eBioscience.com