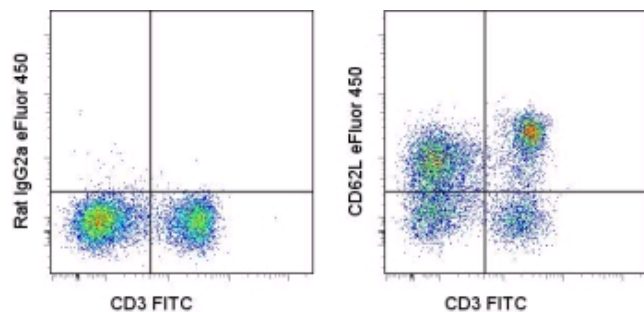


Anti-Mouse CD62L (L-Selectin) eFluor® 450 (Pacific Blue® replacement)

Catalog Number: 48-0621

Also Known As: LECAM-1, Ly-22

RUO: For Research Use Only



Staining of BALB/c splenocytes with Anti-Mouse CD3e FITC (cat. 11-0031) and 0.25 µg of Rat IgG2a κ Isotype Control eFluor® 450 (cat. 48-4321) (left) or Anti-Mouse CD62L (L-Selectin) eFluor® 450 (right). Total viable cells were used for analysis.

Product Information

Contents: Anti-Mouse CD62L (L-Selectin) eFluor® 450 (Pacific Blue® replacement)


REF Catalog Number: 48-0621

Clone: MEL-14


Concentration: 0.2 mg/ml

Host/Isotype: Rat IgG2a, κ

Formulation: aqueous buffer, 0.09% sodium azide, may contain carrier protein/stabilizer

 Temperature Limitation: Store at 2-8°C. Do not freeze. Light sensitive material.

LOT Batch Code: Refer to Vial

 Use By: Refer to Vial

Description

The MEL-14 monoclonal antibody reacts with mouse CD62L, a 76 kDa member of the selectin family. CD62L is expressed by neutrophils, monocytes, and subsets of T, B, and NK cells and binds a number of glycosylated, fucosylated, sulfated sialylated glycoproteins including CD34, glycam-1 and MAdCam-1. These interactions mediate rolling of lymphocytes on activated endothelium at the sites of inflammation and homing of cells to the high endothelial venules (HEV) of peripheral lymphoid tissues.

Applications Reported

This MEL-14 antibody has been reported for use in flow cytometric analysis.

Applications Tested

This MEL-14 antibody has been tested by flow cytometric analysis of mouse splenocytes. This can be used at less than or equal to 0.5 µg per test. A test is defined as the amount (µg) of antibody that will stain a cell sample in a final volume of 100 µL. Cell number should be determined empirically but can range from 10⁵ to 10⁸ cells/test. It is recommended that the antibody be carefully titrated for optimal performance in the assay of interest.

eFluor® 450 is a replacement for Pacific Blue®. eFluor® 450 emits at 456 nm and is excited with the Violet laser (405 nm). Please make sure that your instrument is capable of detecting this fluorochrome.

References

Siegelman, M. H., I. C. Cheng, et al. The mouse lymph node homing receptor is identical with the lymphocyte cell surface marker Ly-22: role of the EGF domain in endothelial binding. 1990 Cell 61(4): 611-22.

Gallatin, W. M., I. L. Weissman, et al. (1983). A cell-surface molecule involved in organ-specific homing of lymphocytes. Nature 1983 304 (5921): 30-4.

Related Products

12-0441 Anti-Human/Mouse CD44 PE (IM7)

48-4321 Rat IgG2a K Isotype Control eFluor® 450 (Pacific Blue® replacement)

