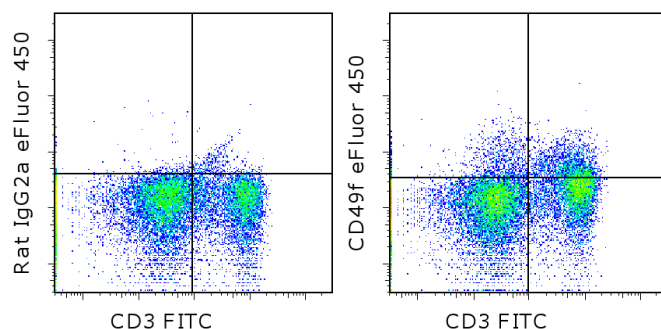


Anti-Human/Mouse CD49f (Integrin alpha 6) eFluor® 450

Catalog Number: 48-0495

Also known as: Integrin α6, ITGA6, VLA6

RUO: For Research Use Only. Not for use in diagnostic procedures.



Staining of C57Bl/6 splenocytes with Anti-Mouse CD3e FITC (cat. 11-0031) and 0.06 ug of Rat IgG2a K Isotype Control eFluor® 450 (cat. 48-4321) (left) or 0.06 ug of Anti-Human/Mouse CD49f (Integrin alpha 6) eFluor® 450 (right). Total viable cells were used for analysis.

Product Information

Contents: Anti-Human/Mouse CD49f (Integrin alpha 6) eFluor® 450

Catalog Number: 48-0495

Clone: eBioGoH3 (GoH3)

Concentration: 0.2 mg/mL

Host/Isotype: Rat IgG2a, k

Formulation: aqueous buffer, 0.09% sodium azide, may contain carrier protein/stabilizer

Temperature Limitation: Store at 2-8°C. Do not freeze. Light-sensitive material.

Batch Code: Refer to vial

Use By: Refer to vial

Description

The eBioGoH3 monoclonal antibody reacts with mouse and human CD49f, also known as integrin alpha 6, very late activation antigen 6 (VLA-6 alpha chain), and platelet gplc. CD49f is a 120 kD transmembrane protein. CD49f associates with CD29, the integrin beta 1 chain, to form the VLA-6 complex; CD49f also associates with CD104, the integrin beta 4 chain, to form the alpha 6 beta 4 complex. CD49f is expressed primarily on T cells, monocytes, platelets, epithelial and endothelial cells. CD49f expression has also been found on germinal center B cells. The eBioGoH3 antibody is cross-reactive to integrin alpha 6 on human, mouse and bovine cells. This antibody has also been reported to have functional activity in blocking the binding of integrin alpha 6 to laminin.

Applications Reported

This eBioGoH3 (GoH3) antibody has been reported for use in flow cytometric analysis.

Applications Tested

This eBioGoH3 (GoH3) antibody has been tested by flow cytometric analysis of normal human peripheral blood cells. This can be used at less than or equal to 0.125 µg per test. A test is defined as the amount (µg) of antibody that will stain a cell sample in a final volume of 100 µL. Cell number should be determined empirically but can range from 10⁵ to 10⁸ cells/test. It is recommended that the antibody be carefully titrated for optimal performance in the assay of interest.

eFluor® 450 is a replacement for Pacific Blue®. eFluor® 450 emits at 456 nm and is excited with the Violet laser (405 nm). Please make sure that your instrument is capable of detecting this fluorochrome.

References

Sonnenberg A, Daams H, Van der Valk MA, Hilkens J, Hilgers J. Development of mouse mammary gland: identification of stages in differentiation of luminal and myoepithelial cells using monoclonal antibodies and polyvalent antiserum against keratin. J Histochem Cytochem. 1986 Aug;34(8):1037-46. (GoH3, FC, IH/F PubMed)

Aumailley M, Timpl R, Sonnenberg A. Antibody to integrin alpha 6 subunit specifically inhibits cell-binding to laminin

Not for further distribution without written consent.

Copyright © 2000-2012 eBioscience, Inc.

Tel: 888.999.1371 or 858.642.2058 • Fax: 858.642.2046 • www.ebioscience.com • info@ebioscience.com

Anti-Human/Mouse CD49f (Integrin alpha 6) eFluor® 450

Catalog Number: 48-0495

Also known as: Integrin α6, ITGA6, VLA6

RUO: For Research Use Only. Not for use in diagnostic procedures.

fragment 8. Exp Cell Res. 1990 May;188(1):55-60. (**GoH3**, FA, PubMed)

Ambrose HE, Wagner SD. Alpha6-integrin is expressed on germinal centre B cells and modifies growth of a B-cell line. Immunology. 2004 Apr;111(4):400-6. (**GoH3**, FC, PubMed)

Related Products

46-4321 Rat IgG2a K Isotype Control PerCP-eFluor® 710 (eBR2a)