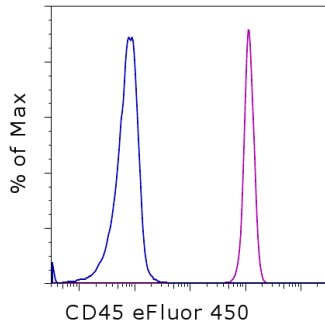


Anti-Human CD45 eFluor[®] 450

Catalog Number: 48-0459

Also known as: Leukocyte Common Antigen, LCA, Ly-5

RUO: For Research Use Only. Not for use in diagnostic procedures.



Staining of normal human peripheral blood cells with Mouse IgG1 K Isotype Control eFluor[®] 450 (cat. 48-4714) (blue histogram) or Anti-Human CD45 eFluor[®] 450 (purple histogram). Cells in the lymphocyte gate were used for analysis.

Product Information



Contents: Anti-Human CD45 eFluor[®] 450

Catalog Number: 48-0459

Clone: HI30

Concentration: 5 μ L (0.5 μ g)/test

Host/Isotype: Mouse IgG1, kappa

HLDA Workshop: IV N816



Formulation: aqueous buffer, 0.09% sodium azide, may contain carrier protein/stabilizer

Temperature Limitation: Store at 2-8°C. Do not freeze. Light sensitive material.

Batch Code: Refer to vial

Use By: Refer to vial

Contains sodium azide



Description

The HI30 monoclonal antibody reacts with all isoforms of human CD45, also known as Leukocyte Common Antigen (LCA). CD45 is expressed by all hematopoietic cells excluding circulating erythrocytes and platelets. The cytoplasmic portion of CD45 has tyrosine phosphatase enzymatic activity and plays an important role in activation of lymphocytes.

Applications Reported

This HI30 antibody has been reported for use in flow cytometric analysis.

Applications Tested

This HI30 antibody has been pre-titrated and tested by flow cytometric analysis of normal human peripheral blood cells. This can be used at 5 μ L (0.5 μ g) per test. A test is defined as the amount (μ g) of antibody that will stain a cell sample in a final volume of 100 μ L. Cell number should be determined empirically but can range from 10^5 to 10^8 cells/test.

eFluor[®] 450 is a replacement for Pacific Blue[®]. eFluor[®] 450 emits at 456 nm and is excited with the Violet laser (405 nm). Please make sure that your instrument is capable of detecting this fluorochrome.

References

Ninomiya M, Abe A, Katsumi A, Xu J, Ito M, Arai F, Suda T, Ito M, Kiyoi H, Kinoshita T, Naoe T. Homing, proliferation and survival sites of human leukemia cells in vivo in immunodeficient mice. *Leukemia*. 2007 Jan;21(1):136-42.(HI30, IF frozen)

Bouma-ter Steege JC, Baeten CI, Thijssen VL, Satijn SA, Verhoeven IC, Hillen HF, Wagstaff J, Griffioen AW. Angiogenic profile of breast carcinoma determines leukocyte infiltration. *Clin Cancer Res*. 2004 Nov 1;10(21):7171-8. (HI30, IHC frozen)

Knapp, W., B. Dorken, et al. eds. (1989). *Leucocyte Typing IV: White Cell Differentiation Antigens*. Oxford University Press. New York.

Not for further distribution without written consent.

Copyright © 2000-2012 eBioscience, Inc.

Tel: 888.999.1371 or 858.642.2058 • Fax: 858.642.2046 • www.ebioscience.com •
info@ebioscience.com

Anti-Human CD45 eFluor® 450

Catalog Number: 48-0459

Also known as: Leukocyte Common Antigen, LCA, Ly-5

RUO: For Research Use Only. Not for use in diagnostic procedures.

Related Products

48-4714 Mouse IgG1 K Isotype Control eFluor® 450 (P3.6.2.8.1)

Not for further distribution without written consent.

Copyright © 2000-2012 eBioscience, Inc.

Tel: 888.999.1371 or 858.642.2058 • Fax: 858.642.2046 • www.ebioscience.com •
info@ebioscience.com