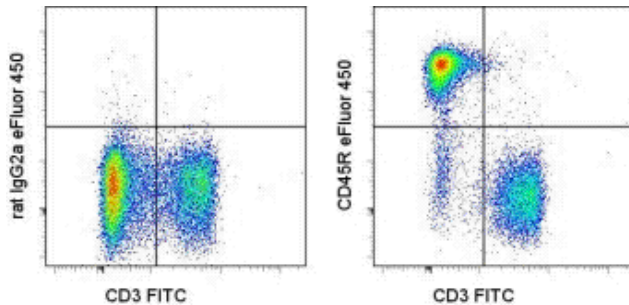


Anti-Human/Mouse CD45R (B220) eFluor® 450

Catalog Number: 48-0452

Also Known As: Ly-5, Lyt-4, T200

RUO: For Research Use Only. Not for use in diagnostic procedures.



Staining of C57BL/6 splenocytes with Anti-Mouse CD3e FITC (cat. 11-0031) and 0.25 µg of Rat IgG2a kappa Isotype Control eFluor® 450 (cat. 48-4321) (left) or 0.25 µg of Anti-Human/Mouse CD45R (B220) eFluor® 450 (right). Total viable cells were used for analysis.

Product Information

Contents: Anti-Human/Mouse CD45R (B220) eFluor® 450

REF **Catalog Number:** 48-0452

Clone: RA3-6B2

Concentration: 0.2 mg/mL

Host/Isotype: Rat IgG2a, kappa

HLDA Workshop: N/A

Formulation: aqueous buffer, 0.09% sodium azide, may contain carrier protein/stabilizer

Temperature Limitation: Store at 2-8°C. Do not freeze. Light sensitive material.

LOT **Batch Code:** Refer to Vial

Use By: Refer to Vial

Caution, contains Azide

Description

The RA3-6B2 monoclonal antibody reacts with exon A-restricted isoform of mouse CD45, a 220 kDa surface molecule. CD45R/B220 epitope is mainly expressed by the B cell lineage from early Pro-B to mature B cells. However, some activated T cells, lymphokine activated killer cells (LAK), NK cell progenitors in the bone marrow, and T cells of the *lpr/lpr* mutant mouse also express this antigen.

Applications Reported

This RA3-6B2 antibody has been reported for use in flow cytometric analysis.

eFluor® 450 is a replacement for Pacific Blue®. eFluor® 450 emits at 456 nm and is excited with the Violet laser. Please make sure that your instrument is capable of detecting this fluorochoime.

Applications Tested

This RA3-6B2 antibody has been tested by flow cytometric analysis of mouse splenocytes. This can be used at less than or equal to 0.5 µg per test. A test is defined as the amount (µg) of antibody that will stain a cell sample in a final volume of 100 µL. Cell number should be determined empirically but can range from 10⁵ to 10⁸ cells/test. It is recommended that the antibody be carefully titrated for optimal performance in the assay of interest.

eFluor™ 450 is a replacement for Pacific Blue®. eFluor™ 450 emits at 456 nm and is excited with the Violet laser (405 nm). Please make sure that your instrument is capable of detecting this fluorochoime.

References

Schuhmann B, Dietrich A, et al. 2005. A role for brain-derived neurotrophic factor in B cell development. *J Neuroimmunol.* 163(1-2):15-23. (RA3-6B2, IHC frozen, PubMed)

Monteith CE, Chelack BJ, et al. 1996. Identification of monoclonal antibodies for immunohistochemical staining of feline B lymphocytes in frozen and formalin-fixed paraffin-embedded tissues. *Can J Vet Res.* 60(3):193-8. (IHC frozen and paraffin, PubMed)

Morse, H. C. d., W. F. Davidson, et al. 1982. Abnormalities induced by the mutant gene *lpr*: expansion of a unique lymphocyte subset. *J Immunol.* 129(6): 2612-5.

Coffman, R. L. 1982. Surface antigen expression and immunoglobulin gene rearrangement during mouse pre-B cell development. *Immunol Rev.* 69: 5-23.

Related Products

11-0031 Anti-Mouse CD3e FITC (145-2C11)

12-0191 Anti-Mouse CD19 PE (MB19-1)
48-4321 Rat IgG2a K Isotype Control eFluor® 450 (eBR2a)

Not for further distribution without written consent.

Copyright © 2000-2012 eBioscience, Inc.

Tel: 888.999.1371 or 858.642.2058 • Fax: 858.642.2046 • www.eBioscience.com • info@eBioscience.com