

## Purified anti-human CD50 (ICAM-3)

**Catalog # / Size:** 330002 / 100 µg

**Clone:** CBR-IC3/1

**Isotype:** Mouse IgG1, κ

**Immunogen:** SKW3 cells

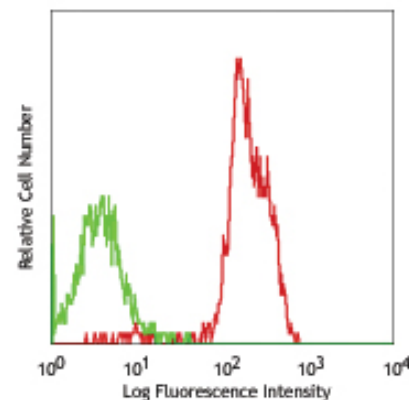
**Reactivity:** Human

**Preparation:** The antibody was purified by affinity chromatography.

**Formulation:** Phosphate-buffered solution, pH 7.2, containing 0.09% sodium azide.

**Concentration:** 0.5 mg/ml

**Storage:** The antibody solution should be stored undiluted at 4°C.



Human peripheral blood lymphocytes stained with purified CBR-IC3/1, followed by anti-mouse IgG FITC

## Applications:

**Applications:** FC - *Quality tested*  
IP - *Reported in the literature*

**Recommended Usage:** Each lot of this antibody is quality control tested by immunofluorescent staining with flow cytometric analysis. For immunofluorescent staining, the suggested use of this reagent is  $\leq 1.0$  µg per  $10^6$  cells in 100 µl volume. It is recommended that the reagent be titrated for optimal performance for each application.

**Application Notes:** Additional reported applications include: immunoprecipitation (1), inhibit the interaction of ICAM-3 and LFA-1(1)

**Application References:** 1. deFougerolles AR and Springer TA, *et al.* 1992. *J. Exp. Med.* 175:185

**Description:** CD50 is a 120-140 kD type I membrane protein also known as intercellular adhesion molecule 3 (ICAM-3). It is broadly expressed on leukocytes, endothelial cells, and Langerhans cells. CD50 is a member of the Ig superfamily. It provides costimulatory signal for T cells and regulates cell adhesion through interaction with LFA-1 (CD11a/CD18,  $\alpha_L/\beta_2$ ) integrin.

**Antigen References:** 1. Valent P, *et al.* 2001. *Immunol. Rev.* 179:74.

### Related Products:

**Product**  
Purified Mouse IgG1, κ Isotype Ctrl  
Cell Staining Buffer  
RBC Lysis Buffer (10X)

**Clone**  
MG1-45

**Application**  
FC, ICC, ICFC, IF, IHC, IP, WB  
FC, ICC, ICFC  
FC, ICFC



For research use only. Not for diagnostic use. Not for resale. BioLegend will not be held responsible for patent infringement or other violations that may occur with the use of our products.



\*These products may be covered by one or more Limited Use Label Licenses (see the BioLegend Catalog or our website, [www.biolegend.com/ordering#license](http://www.biolegend.com/ordering#license)). BioLegend products may not be transferred to third parties, resold, modified for resale, or used to manufacture commercial products, reverse engineer functionally similar materials, or to provide a service to third parties without written approval of BioLegend. By use of these products you accept the terms and conditions of all applicable Limited Use Label Licenses. Unless otherwise indicated, these products are for research use only and are not intended for human or animal diagnostic, therapeutic or commercial use.