

## PE anti-human CD51

**Catalog # / Size:** 327909 / 25 tests  
327910 / 100 tests

**Clone:** NKI-M9

**Isotype:** Mouse IgG2a,  $\kappa$

**Workshop Number:** IV 103

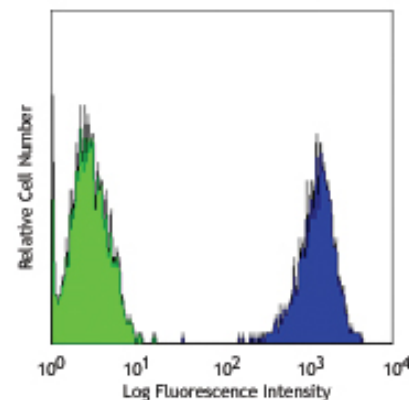
**Immunogen:** Melonama cells

**Reactivity:** Human

**Preparation:** The antibody was purified by affinity chromatography, and conjugated with PE under optimal conditions. The solution is free of unconjugated PE and unconjugated antibody.

**Formulation:** Phosphate-buffered solution, pH 7.2, containing 0.09% sodium azide and 0.2% (w/v) BSA (origin USA).

**Storage:** The antibody solution should be stored undiluted at 4°C and protected from prolonged exposure to light. **Do not freeze.**



Human melanoma cell line M21 stained with NKI-M9 PE

## Applications:

**Applications:** FC - Quality tested

**Recommended Usage:** Each lot of this antibody is quality control tested by immunofluorescent staining with flow cytometric analysis. **Test size products are transitioning from 20  $\mu$ l to 5  $\mu$ l per test.** Please check your vial or your CoA to find the suggested use of this reagent per million cells in 100  $\mu$ l staining volume or per 100  $\mu$ l of whole blood. It is recommended that the reagent be titrated for optimal performance for each application. Read more at [www.biolegend.com/testsize](http://www.biolegend.com/testsize) regarding the test size change.

**Application References:**

- Knapp W, et al. Eds. 1989. Leucocyte Typing IV. Oxford University Press. New York.
- Defilippi P, et al. 1991. *J. Cell Biol.* 114:855. PubMed
- Burdick MM, et al. 2003. *Am. J. Physiol. Cell Ph.* 284:C977. PubMed
- Grzeszkiewicz TM, et al. 2001. *J. Biol. Chem.* 276:21943.
- Sonnenberg A, et al. 1990. *J. Cell Biol.* 110:2145. PubMed

**Description:** CD51 is a type I integral membrane glycoprotein, known as vitronectin receptor  $\alpha$  chain, or integrin  $\alpha_v$ . It forms heterodimer with integrin  $\beta_1$  (CD29),  $\beta_3$  (CD61),  $\beta_5$ ,  $\beta_6$ , or  $\beta_8$ . CD51 contains two disulfide-linked subunits of 125 kD and 24 kD, and is expressed on endothelial cells, fibroblasts, macrophages, platelets, osteoclasts, neuroblastoma, melanoma, and hepatoma cells. Many extracellular matrix proteins with RGD-motifs are CD51 ligands. In association with its  $\beta$  chains, CD51 binds vitronectin, von Willebrand factor, fibronectin, thrombospondin, osteopontin, fibrinogen, and laminin. CD51, as an adhesion molecule, plays important roles in leukocytes homing and rolling, mediates bone absorption and angiogenesis.

**Antigen References:**

- Nesbitt S, et al. 1993. *J. Biol. Chem.* 268:16737.
- Zola H, et al. 2007. Leukocyte and Stromal Cell Molecules: The CD Markers Wiley-Liss A John Wiley & Sons Inc, Publication

Related Products:	Product	Clone	Application
	PE Mouse IgG2a, $\kappa$ Isotype Ctrl (FC)	MOPC-173	FC
	Cell Staining Buffer		FC, ICC, ICFC
	RBC Lysis Buffer (10X)		FC, ICFC
	Human TruStain FcX™ (Fc Receptor Blocking Solution)		FC, ICC, ICFC



For research use only. Not for diagnostic use. Not for resale. BioLegend will not be held responsible for patent infringement or other violations that may occur with the use of our products.



\*These products may be covered by one or more Limited Use Label Licenses (see the BioLegend Catalog or our website, [www.biolegend.com/ordering#license](http://www.biolegend.com/ordering#license)). BioLegend products may not be transferred to third parties, resold, modified for resale, or used to manufacture commercial products, reverse engineer functionally similar materials, or to provide a service to third parties without written approval of BioLegend. By use of these products you accept the terms and conditions of all applicable Limited Use Label Licenses. Unless otherwise indicated, these products are for research use only and are not intended for human or animal diagnostic, therapeutic or commercial use.