

## PE anti-human CD62E

**Catalog # / Size:** 322605 / 25 tests  
322606 / 100 tests

**Clone:** HCD62E

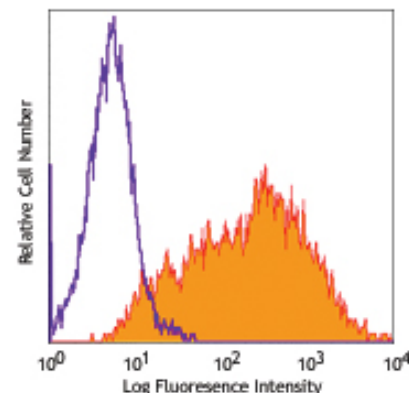
**Isotype:** Mouse IgG2a,  $\kappa$

**Reactivity:** Human

**Preparation:** The antibody was purified by affinity chromatography, and conjugated with PE under optimal conditions. The solution is free of unconjugated PE and unconjugated antibody.

**Formulation:** Phosphate-buffered solution, pH 7.2, containing 0.09% sodium azide and 0.2% (w/v) BSA (origin USA).

**Storage:** The antibody solution should be stored undiluted at 4°C and protected from prolonged exposure to light. **Do not freeze.**



*TNF- $\alpha$  stimulated human endothelial cells (HUVEC) stained with HCD62E PE*

## Applications:

**Applications:** FC - Quality tested

**Recommended Usage:** Each lot of this antibody is quality control tested by immunofluorescent staining with flow cytometric analysis. **Test size products are transitioning from 20  $\mu$ l to 5  $\mu$ l per test.** Please check your vial or your CoA to find the suggested use of this reagent per million cells in 100  $\mu$ l staining volume or per 100  $\mu$ l of whole blood. It is recommended that the reagent be titrated for optimal performance for each application. Read more at [www.biolegend.com/testsize](http://www.biolegend.com/testsize) regarding the test size change.

**Description:** CD62E (also known as E-selectin, ELAM-1, and LECAM-1) is a 115 kD type I membrane protein and a member of the selectin family. CD62E is highly expressed on activated endothelial cells (IL-2, TNF- $\alpha$ , other cytokines can increase expression) and can also be expressed on endothelial cells in the skin, bone marrow and placenta. CD62E is involved in tethering and leucocyte rolling on activated endothelium at inflammatory sites and may also play a role in tumor metastasis and angiogenesis. CD62E binds to both Sialyl Lewis X (CD15s) and PSGL-1 (CD162). The HCD62E antibody has been shown to recognize human CD62E and to be useful for flow cytometry.

- Antigen References:**
- Collins T, *et al.* 1991. *J. Biol. Chem.* 266:2466.
  - Bevilacqua MP, *et al.* 1987. *Proc. Natl. Acad. Sci. USA* 84:9238.
  - Berg EL, *et al.* 1991. *J. Exp. Med.* 174:1461.
  - Lawrence MB, *et al.* 1993. *J. Immunol.* 151:6338.
  - Walz G, *et al.* 1990. *Science* 250:1132.

Related Products:	Product	Clone	Application
	Cell Staining Buffer		FC, ICC, ICFC
	PE Mouse IgG2a, $\kappa$ Isotype Ctrl (FC)	MOPC-173	FC
	Human TruStain FcX™ (Fc Receptor Blocking Solution)		FC, ICC, ICFC



For research use only. Not for diagnostic use. Not for resale. BioLegend will not be held responsible for patent infringement or other violations that may occur with the use of our products.



\*These products may be covered by one or more Limited Use Label Licenses (see the BioLegend Catalog or our website, [www.biolegend.com/ordering#license](http://www.biolegend.com/ordering#license)). BioLegend products may not be transferred to third parties, resold, modified for resale, or used to manufacture commercial products, reverse engineer functionally similar materials, or to provide a service to third parties without written approval of BioLegend. By use of these products you accept the terms and conditions of all applicable Limited Use Label Licenses. Unless otherwise indicated, these products are for research use only and are not intended for human or animal diagnostic, therapeutic or commercial use.