

## Alexa Fluor® 700 anti-human CD56 (NCAM)

**Catalog # / Size:** 318315 / 25 µg  
318316 / 100 µg

**Clone:** HCD56

**Isotype:** Mouse IgG1, κ

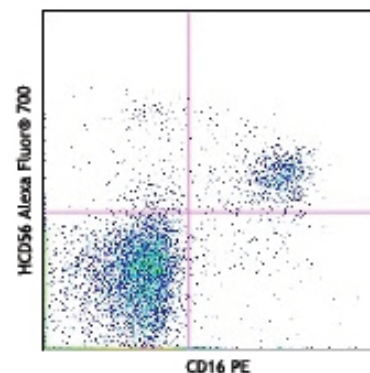
**Reactivity:** Human

**Preparation:** The antibody was purified by affinity chromatography, and conjugated with Alexa Fluor® 700 under optimal conditions. The solution is free of unconjugated Alexa Fluor® 700.

**Formulation:** Phosphate-buffered solution, pH 7.2, containing 0.09% sodium azide.

**Concentration:** 0.5 mg/ml

**Storage:** The antibody solution should be stored undiluted at 4°C and protected from prolonged exposure to light. **Do not freeze.**



Human peripheral blood lymphocytes stained with CD16 (3G8) PE and HCD56 Alexa Fluor® 700

## Applications:

**Applications:** FC - Quality tested

**Recommended Usage:** This reagent is developed for immunofluorescent staining for flow cytometric analysis, the suggested use of this reagent is  $\leq 1.0$  µg per  $10^6$  cells in 100 µl volume or 100 µl of whole blood. It is highly recommended that the reagent be titrated for optimal performance for each application.

\* Alexa Fluor® 700 has a maximum emission of 719 nm when it is excited at 633nm / 635nm. Prior to using Alexa Fluor® 700 conjugate for flow cytometric analysis, please verify your flow cytometer's capability of exciting and detecting the fluorochrome.

\*\* Alexa Fluor® is a registered trademark of Molecular Probes, Inc. Alexa Fluor® dye antibody conjugates are sold under license from Molecular Probes, Inc. for research use only, except for use in combination with microarrays and high content screening, and are covered by pending and issued patents.

**Application References:** 1. Kishimoto T, *et al.* Eds. 1997. Leucocyte Typing VI. Garland Publishing Inc. London.

**Description:** CD56 is a single transmembrane glycoprotein also known as NCAM (Neural Cell Adhesion Molecule), Leu-19, or NKH1. It is a member of the Ig superfamily. The 140 kD isoform is expressed on NK cells and NK-T cells. CD56 is also expressed in the brain (cerebellum and cortex) and at neuromuscular junctions. Certain large granular lymphocyte (LGL) leukemias, small-cell lung carcinomas, neuronal derived tumors, myelomas, and myeloid leukemias also express CD56. CD56 plays a role in homophilic and heterophilic adhesion via binding to itself or heparin sulfate.

**Antigen References:** 1. Lanier L, *et al.* 1991. *J. Immunol.* 146:4421.  
2. Hemperly J, *et al.* 1990. *J. Mol. Neurosci.* 2:71.  
3. Cremer H, *et al.* 1994. *Nature* 367:455.

### Related Products:

Product  
Cell Staining Buffer  
Alexa Fluor® 700 Mouse IgG1, κ Isotype Ctrl  
Human TruStain FcX™ (Fc Receptor Blocking Solution)

### Clone

MOPC-21

### Application

FC, ICC, ICFC  
FC, ICFC  
FC, ICC, ICFC



For research use only. Not for diagnostic use. Not for resale. BioLegend will not be held responsible for patent infringement or other violations that may occur with the use of our products.



\*These products may be covered by one or more Limited Use Label Licenses (see the BioLegend Catalog or our website, [www.biolegend.com/ordering#license](http://www.biolegend.com/ordering#license)). BioLegend products may not be transferred to third parties, resold, modified for resale, or used to manufacture commercial products, reverse engineer functionally similar materials, or to provide a service to third parties without written approval of BioLegend. By use of these products you accept the terms and conditions of all applicable Limited Use Label Licenses. Unless otherwise indicated, these products are for research use only and are not intended for human or animal diagnostic, therapeutic or commercial use.