

# Product Data Sheet

## FITC anti-human CD52

**Catalog # / Size:** 316003 / 25 tests  
316004 / 100 tests

**Clone:** HI186

**Isotype:** Mouse IgG2b,  $\kappa$

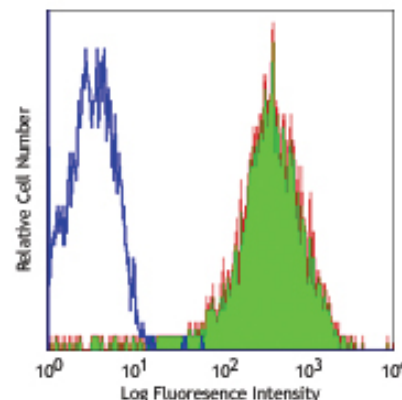
**Immunogen:** Human tonsil

**Reactivity:** Human

**Preparation:** The antibody was purified by affinity chromatography, and conjugated with FITC under optimal conditions. The solution is free of unconjugated FITC.

**Formulation:** Phosphate-buffered solution, pH 7.2, containing 0.09% sodium azide and 0.2% (w/v) BSA (origin USA).

**Storage:** The antibody solution should be stored undiluted at 4°C and protected from prolonged exposure to light. **Do not freeze.**



Human peripheral blood lymphocytes stained with HI186 FITC

## Applications:

**Applications:** FC - Quality tested

**Recommended Usage:** Each lot of this antibody is quality control tested by immunofluorescent staining with flow cytometric analysis. **Test size products are transitioning from 20  $\mu$ l to 5  $\mu$ l per test.** Please check your vial or your CoA to find the suggested use of this reagent per million cells in 100  $\mu$ l staining volume or per 100  $\mu$ l of whole blood. It is recommended that the reagent be titrated for optimal performance for each application. Read more at [www.biolegend.com/testsize](http://www.biolegend.com/testsize) regarding the test size change.

**Application Notes:** Additional reported applications (for the relevant formats) include: immunohistochemical staining of formalin-fixed paraffin-embedded tissue sections.

**Application References:** 1. Kishimoto T, *et al.* Eds. 1997. Leucocyte Typing VI. Garland Publishing Inc. London.

**Description:** CD52, also known as Cambridge pathology antigen 1 (CAMPATH-1), is a 25-29 kD glycoprotein containing a large N-linked carbohydrate moiety. The actual molecule of CD52 is only 8-9 kD. It is expressed in the male reproductive tract and on virtually all lymphocytes (T and B cells), as well as macrophages/monocytes, eosinophils, and red cells. CD52 is thought to play a role in carrying and orienting carbohydrates. CD52 is a potent target for complement-mediated lysis and antibody-mediated cellular cytotoxicity and has been used as a depletion target for chronic lymphocytic leukemia (CLL)/lymphoma and immunosuppression. The HI186 antibody is useful for flow cytometry and immunohistochemistry.

**Antigen References:** 1. Leukocyte Typing VI. Kishimoto T, *et al.* (Eds.) Garland Publishing Inc. (1997)  
2. Xia MQ, *et al.* 1991. *Eur. J. Immunol.* 21:1677.  
3. Kirchhoff C, *et al.* 1993. *Mol. Reprod. Dev.* 34:8.  
4. Xia MQ, *et al.* 1993. *Biochem. J.* 293:633.

### Related Products:

**Product**  
FITC Mouse IgG2b,  $\kappa$  Isotype Ctrl  
Cell Staining Buffer  
RBC Lysis Buffer (10X)  
Human TruStain FcX™ (Fc Receptor Blocking Solution)

**Clone**  
MPC-11

**Application**  
FC, ICFC  
FC, ICC, ICFC  
FC, ICFC  
FC, ICC, ICFC



For research use only. Not for diagnostic use. Not for resale. BioLegend will not be held responsible for patent infringement or other violations that may occur with the use of our products.



\*These products may be covered by one or more Limited Use Label Licenses (see the BioLegend Catalog or our website, [www.biolegend.com/ordering#license](http://www.biolegend.com/ordering#license)). BioLegend products may not be transferred to third parties, resold, modified for resale, or used to manufacture commercial products, reverse engineer functionally similar materials, or to provide a service to third parties without written approval of BioLegend. By use of these products you accept the terms and conditions of all applicable Limited Use Label Licenses. Unless otherwise indicated, these products are for research use only and are not intended for human or animal diagnostic, therapeutic or commercial use.