

Product Data Sheet

Pacific Blue™ anti-human CD56 (NCAM)

Catalog # / Size: 304624 / 100 µg
304629 / 100 tests

Clone: MEM-188

Isotype: Mouse IgG2a, κ

Workshop Number: VI NK26

Immunogen: KG-1 human acute myelogenous leukemia cell line

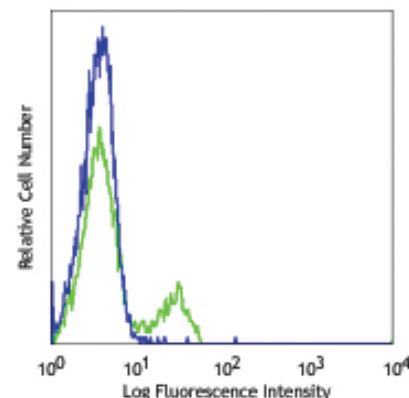
Reactivity: Human, **Cross-Reactivity:** Cattle (Bovine, Cow), Swine (Pig, Porcine)

Preparation: The antibody was purified by affinity chromatography, and conjugated with Pacific Blue™ under optimal conditions. The solution is free of unconjugated Pacific Blue™.

Formulation: test size: Phosphate-buffered solution, pH 7.2, containing 0.09% sodium azide and 0.2% (w/v) BSA (origin USA).
µg size: Phosphate-buffered solution, pH 7.2, containing 0.09% sodium azide.

Concentration: test size: lot-specific; µg size: 0.5 mg/ml

Storage: The CD56 antibody solution should be stored undiluted at 4°C, and protected from prolonged exposure to light. **Do not freeze.**



Human peripheral blood lymphocytes stained with MEM-188 Pacific Blue™

Applications:

Applications: FC - Quality tested

Recommended Usage: Each lot of this antibody is quality control tested by immunofluorescent staining with flow cytometric analysis.
For test size, the suggested use of this reagent for immunofluorescent staining is 5 µl per million cells or 5 µl per 100 µl of whole blood.
For µg size, the suggested use of this reagent for immunofluorescent staining is ≤2.0 µg per million cells in 100 µl volume or 100 µl of whole blood.
It is recommended that the reagent be titrated for optimal performance for each application.

* Pacific Blue™ has a maximum emission of 455 nm when it is excited at 405 nm. Prior to using Pacific Blue™ conjugate for flow cytometric analysis, please verify your flow cytometer's capability of exciting and detecting the fluorochrome.

** Pacific Blue™ is a registered trademark of Molecular Probes, Inc. Pacific Blue™ dye antibody conjugates are sold under license from Molecular Probes, Inc. for research use only, except for use in combination with microarrays and high content screening, and are covered by pending and issued patents.

Application Notes: Additional reported applications (for the relevant formats) include: immunoprecipitation, immunohistochemical staining of formalin-fixed paraffin-embedded tissue sections, and Western blotting (non-reducing).

Application References: 1. Kishimoto T, *et al.* Eds. 1997. Leucocyte Typing VI. Garland Publishing Inc. London.
2. Hanaoka N, *et al.* 2010. *J. Immunol.* 185:5732. PubMed

Description: CD56 is a single transmembrane glycoprotein also known as N-CAM (Neural Cell Adhesion Molecule), Leu-19, or NKH1. It is a member of the Ig superfamily. The 140 kD isoform is expressed on NK cells and NK-T cells. CD56 is also expressed in brain (cerebellum and cortex) and at neuromuscular junctions. Certain large granular lymphocyte (LGL) leukemias, small-cell lung carcinomas, neuronal derived tumors, myelomas, and myeloid leukemias also express CD56. CD56 plays a role in homophilic and heterophilic adhesion via binding to itself or heparin sulfate.

Antigen References: 1. Lanier L, *et al.* 1991. *J. Immunol.* 146:4421.
2. Hemperly J, *et al.* 1990. *J. Mol. Neurosci.* 2:71.
3. Cremer H, *et al.* 1994. *Nature* 367:455.

Related Products:

Product	Clone	Application
Pacific Blue™ Mouse IgG2a, κ Isotype Ctrl	MOPC-173	FC, ICFC
Cell Staining Buffer		FC, ICC, ICFC
RBC Lysis Buffer (10X)		FC, ICFC
Human TruStain FcX™ (Fc Receptor Blocking Solution)		FC, ICC, ICFC



For research use only. Not for diagnostic use. Not for resale. BioLegend will not be held responsible for patent infringement or other violations that may occur with the use of our products.



*These products may be covered by one or more Limited Use Label Licenses (see the BioLegend Catalog or our website, www.biollegend.com/ordering#license). BioLegend products may not be transferred to third parties, resold, modified for resale, or used to manufacture commercial products, reverse engineer functionally similar materials, or to provide a service to third parties without written approval of BioLegend. By use of these products you accept the terms and conditions of all applicable Limited Use Label Licenses. Unless otherwise indicated, these products are for research use only and are not intended for human or animal diagnostic, therapeutic or commercial use.