

PE anti-human CD51/61

Catalog # / Size: 304406 / 100 tests

Clone: 23C6

Isotype: Mouse IgG1, κ

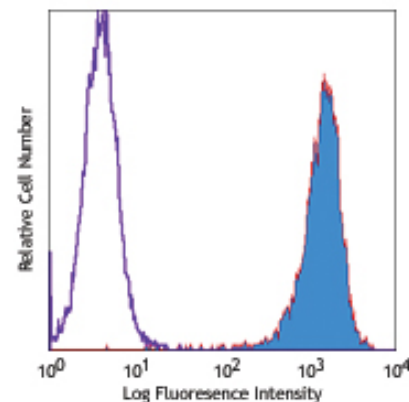
Workshop Number: V S246

Reactivity: Human, **Cross-Reactivity:** Rabbit (Lapine), Chicken³

Preparation: The antibody was purified by affinity chromatography, and conjugated with PE under optimal conditions. The solution is free of unconjugated PE and unconjugated antibody.

Formulation: Phosphate-buffered solution, pH 7.2, containing 0.09% sodium azide and 0.2% (w/v) BSA (origin USA).

Storage: The antibody solution should be stored undiluted at 4°C and protected from prolonged exposure to light. **Do not freeze.**



Human melanoma cell line M21
stained with 23C6 PE

Applications:

Applications: FC - Quality tested

Recommended Usage: Each lot of this antibody is quality control tested by immunofluorescent staining with flow cytometric analysis. **Test size products are transitioning from 20 μ l to 5 μ l per test.** Please check your vial or your CoA to find the suggested use of this reagent per million cells in 100 μ l staining volume or per 100 μ l of whole blood. It is recommended that the reagent be titrated for optimal performance for each application. Read more at www.biolegend.com/testsize regarding the test size change.

Application Notes: Additional reported applications (for the relevant formats) include: immunoprecipitation⁵, immunohistochemical staining of acetone-fixed frozen tissue sections⁵, immunofluorescence microscopy⁵, and blocking of cell adhesion^{4,6}. The LEAF™ Purified antibody (Endotoxin <0.1 EU/ μ g, Azide-Free, 0.2 μ m filtered) is recommended for functional assays (Cat. No. 304414).

Application References:

- Knapp WB, *et al.* 1989. Leucocyte Typing IV Oxford University Press. New York.
- Schlossman S, *et al.* Eds. 1995. Leucocyte Typing V. Oxford University Press. New York.
- Horton M, *et al.* 1991. *Exp. Cell Res.* 195:368.
- Takahashi R, *et al.* 1999. *Blood* 93:1951. (Block)
- Davies J, *et al.* 1989. *J. Cell Biol.* 109:1817. (IF, IHC, IP)
- Deregibus MC, *et al.* 2007. *Blood* doi:10.1182/blood-2007-03-078709. (FC, Block)
- Barau A, *et al.* 2010. *J. Ultrasound Med.* 29:173. PubMed

Description: CD51/CD61 is an integrin complex known as α v β ₃. It is expressed at high levels on osteoclasts, endothelial cells, and melanoma cells and at low levels on platelets and macrophages. CD51 is a heterodimer composed of disulfide-linked 125 kD and 24 kD proteins. CD61 is also a member of the integrin family known as gpIIIa or β ₃ integrin. It is a 110 kD common β subunit of CD51/CD61 or CD41/CD61 complex. CD51/CD61, also known as the vitronectin receptor, mediates the binding of platelets to immobilized vitronectin without prior activation. Other ligands include RGD-containing proteins such as fibrinogen, fibronectin, von Willebrand factor (vWf), laminin, thrombospondin and the neural adhesion molecule L1. CD51/CD61 also mediates cell-cell adhesion via interaction with CD31. CD51/CD61 acts as an activation-independent receptor for platelet attachment and spreading on vitronectin and other RGD-containing proteins, including matrix components. The 23C6 antibody has been reported to be useful for blocking studies.

Antigen References:

- Davies J, *et al.* 1989. *J. Cell Biol.* 109:1817.
- Nesbitt S, *et al.* 1993. *J. Biol. Chem.* 268:16737.

Related Products:

Product	Clone	Application
PE Mouse IgG1, κ Isotype Ctrl	MOPC-21	FC, ICFC
Cell Staining Buffer		FC, ICC, ICFC
RBC Lysis Buffer (10X)		FC, ICFC
Human TruStain FcX™ (Fc Receptor Blocking Solution)		FC, ICC, ICFC



For research use only. Not for diagnostic use. Not for resale. BioLegend will not be held responsible for patent infringement or other violations that may occur with the use of our products.



*These products may be covered by one or more Limited Use Label Licenses (see the BioLegend Catalog or our website, www.biolegend.com/ordering#license). BioLegend products may not be transferred to third parties, resold, modified for resale, or used to manufacture commercial products, reverse engineer functionally similar materials, or to provide a service to third parties without written approval of BioLegend. By use of these products you accept the terms and conditions of all applicable Limited Use Label Licenses. Unless otherwise indicated, these products are for research use only and are not intended for human or animal diagnostic, therapeutic or commercial use.