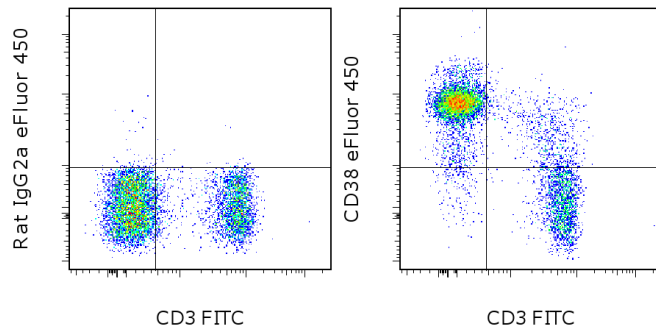


Anti-Mouse CD38 eFluor[®] 450

Catalog Number: 48-0381

Also known as: ADP-Ribosyl Cyclase, Cyclic ADP-Ribose Hydrolase

RUO: For Research Use Only. Not for use in diagnostic procedures.



Staining of BALB/c splenocytes with Anti-Mouse CD3e FITC (cat. 11-0031) and 0.25 ug of Rat IgG2a K Isotype Control eFluor[®] 450 (cat. 48-4321) (left) or 0.25 ug of Anti-Mouse CD38 eFluor[®] 450 (right). Total viable cells were used for analysis.

Product Information

Contents: Anti-Mouse CD38 eFluor[®] 450



Catalog Number: 48-0381

Clone: 90

Concentration: 0.2 mg/mL

Host/Isotype: Rat IgG2a, kappa

Formulation: aqueous buffer, 0.09% sodium

azide, may contain carrier protein/stabilizer

Temperature Limitation: Store at 2-8°C. Do not freeze. Light-sensitive material.

Batch Code: Refer to vial

Use By: Refer to vial

Contains sodium azide



Description

The 90 monoclonal antibody reacts with the mouse CD38 molecule, an ~42 kDa type II transmembrane protein. CD38 is expressed at increasingly higher levels on B cells at each stage of B-cell differentiation, and is then down-regulated on germinal center B cells and mature plasma cells. Its expression is reported on a subpopulation of thymocytes, mature T cells, and NK cells. Crosslinking of CD38 on the surface of mature, resting B cells induces B-cell proliferation, which is enhanced by co-signals such as IL-4 and LPS. CD38, a counter-receptor for CD31, is an ectoenzyme with cyclase and hydrolase enzymatic activity and is speculated to play a role in lymphocyte activation and differentiation.

Applications Reported

This 90 antibody has been reported for use in flow cytometric analysis.

Applications Tested

This 90 antibody has been tested by flow cytometric analysis of mouse splenocytes. This can be used at less than or equal to 0.5 µg per test. A test is defined as the amount (µg) of antibody that will stain a cell sample in a final volume of 100 µL. Cell number should be determined empirically but can range from 10⁵ to 10⁸ cells/test. It is recommended that the antibody be carefully titrated for optimal performance in the assay of interest.

eFluor[®] 450 is a replacement for Pacific Blue[®]. eFluor[®] 450 emits at 456 nm and is excited with the Violet laser (405 nm). Please make sure that your instrument is capable of detecting this fluorochrome.

References

Oliver, A. M., J. C. Grimaldi, et al. 1999. Independently ligating CD38 and Fc gammaRIIB relays a dominant negative signal to B cells. *Hybridoma* 18(2): 113-9.

Oliver, A. M., F. Martin, et al. 1997. Marginal zone B cells exhibit unique activation, proliferative and immunoglobulin secretory responses. *Eur J Immunol* 27(9): 2366-74.

Not for further distribution without written consent.

Copyright © 2000-2012 eBioscience, Inc.

Tel: 888.999.1371 or 858.642.2058 • Fax: 858.642.2046 • www.ebioscience.com •
info@ebioscience.com

Anti-Mouse CD38 eFluor® 450

Catalog Number: 48-0381

Also known as: ADP-Ribosyl Cyclase, Cyclic ADP-Ribose Hydrolase

RUO: For Research Use Only. Not for use in diagnostic procedures.

Oliver, A. M., F. Martin, et al. 1997. Mouse CD38 is down-regulated on germinal center B cells and mature plasma cells. *J Immunol* 158(3): 1108-15.

Related Products

00-4300 10X RBC Lysis Buffer (Multi-species)

11-0031 Anti-Mouse CD3e FITC (145-2C11)

48-4321 Rat IgG2a K Isotype Control eFluor® 450 (eBR2a)

Not for further distribution without written consent.

Copyright © 2000-2012 eBioscience, Inc.

Tel: 888.999.1371 or 858.642.2058 • Fax: 858.642.2046 • www.ebioscience.com •
info@ebioscience.com