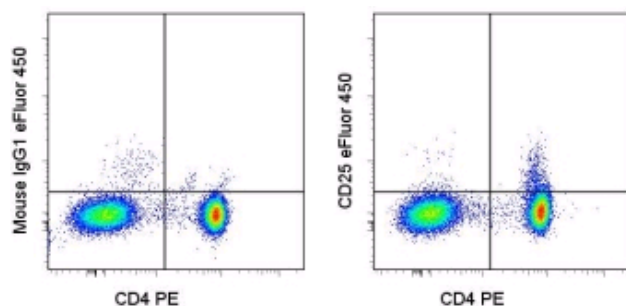


Anti-Human CD25 eFluor® 450 (Pacific Blue® replacement)

Catalog Number: 48-0259

Also Known As: Interleukin-2 Receptor alpha, IL-2R α , IL2R α

RUO: For Research Use Only



Staining of normal human peripheral blood cells with Anti-Human CD4 PE (cat. 12-0049) and of Mouse IgG1 κ Isotype Control eFluor® 450 (cat. 48-4714) (left) or Anti-Human CD25 eFluor® 450 (right). Cells in the lymphocyte gate were used for analysis.

Product Information

Contents: Anti-Human CD25 eFluor® 450 (Pacific Blue® replacement)

REF Catalog Number: 48-0259


Clone: BC96

Concentration: 5 μ l (0.25 μ g)/test A test is defined as the amount that will stain 1×10^6 target cells in a volume of 100 μ l.


Host/Isotype: Mouse IgG1, κ


HLDA Workshop: V T-072

Formulation: aqueous buffer, 0.09% sodium azide, may contain carrier protein/stabilizer

 Temperature Limitation: Store at 2-8°C. Do not freeze. Light sensitive material.

LOT Batch Code: Refer to Vial

 Use By: Refer to Vial

 Caution, contains Azide

Description

The BC96 monoclonal antibody reacts with human CD25, the 55 kDa interleukin-2 receptor α chain (IL-2R α). CD25 is expressed by early progenitors of T and B lineage as well as by activated mature T and B lymphocytes. By itself, CD25 binds IL-2 only with low affinity. However, CD25 associates with CD122 (IL-2 receptor β chain) and CD132 (common γ chain) to form the high affinity IL-2 receptor. CD25 plays a role in lymphocyte differentiating and activation/proliferation.

Applications Reported

This BC96 antibody has been reported for use in flow cytometric analysis.

Applications Tested

This BC96 antibody has been pre-titrated and tested by flow cytometric analysis of normal human peripheral blood cells. This can be used at 5 μ l (0.25 μ g)/per test. A test is defined as the amount (μ g)/test of antibody that will stain a cell sample in a final volume of 100 μ l. Cell number should be determined empirically but can range from 10^5 to 10^8 cells/test.

eFluor™ 450 is a replacement for Pacific Blue®. eFluor™ 450 emits at 456 nm and is excited with the Violet laser (405 nm). Please make sure that your instrument is capable of detecting this fluorochrome.

References

Schlossman, S., L. Bloumsell, et al. eds. (1995). Leucocyte Typing V: White Cell Differentiation Antigens. Oxford University Press. New York.

Related Products

48-0253 Anti-Mouse CD25 eFluor® 450 (Pacific Blue® replacement) (eBio3C7 (3C7))

48-4714 Mouse IgG1 K Isotype Control eFluor® 450 (Pacific Blue® replacement)

Not for further distribution without written consent.

Copyright © 2000-2010 eBioscience, Inc.

Tel: 888.999.1371 or 858.642.2058 • Fax: 858.642.2046 • www.eBioscience.com • info@eBioscience.com