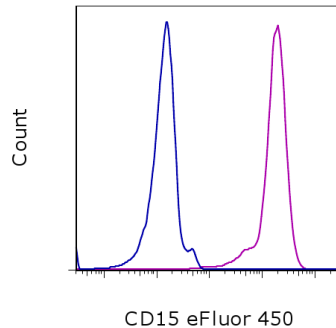


## Anti-Human CD15 eFluor<sup>®</sup> 450

**Catalog Number:** 48-0158

**Also known as:** Leu-M1, Lewis-x, Lex, stage-specific embryonic antigen-1

**RUO: For Research Use Only. Not for use in diagnostic procedures.**



Staining of normal human peripheral blood cells with Mouse IgM Isotype Control eFluor<sup>®</sup> 450 (blue histogram) or Anti-Human CD15 eFluor<sup>®</sup> 450 (purple histogram). Cells in the granulocyte gate were used for analysis.

### Product Information



**Contents:** Anti-Human CD15 eFluor<sup>®</sup> 450

**Catalog Number:** 48-0158

**Clone:** MMA

**Concentration:** 5  $\mu$ L (0.125  $\mu$ g)/test

**Host/Isotype:** Mouse IgM



**Formulation:** aqueous buffer, 0.09% sodium

azide, may contain carrier protein/stabilizer

**Temperature Limitation:** Store at 2-8°C. Do not freeze. Light sensitive material.

**Batch Code:** Refer to vial

**Use By:** Refer to vial

**Caution, contains Azide**

### Description

The MMA monoclonal antibody reacts with human CD15, Lewis X. This 3-fucosyl-N-acetylglucosamine carbohydrate moiety is expressed by granulocytes. Monocytes express this structure at varying degree while lymphocytes are negative.

### Applications Reported

This MMA antibody has been reported for use in flow cytometric analysis.

### Applications Tested

This MMA antibody has been pre-titrated and tested by flow cytometric analysis of normal human peripheral blood cells. This can be used at 5  $\mu$ L (0.125  $\mu$ g) per test. A test is defined as the amount ( $\mu$ g) of antibody that will stain a cell sample in a final volume of 100  $\mu$ L. Cell number should be determined empirically but can range from  $10^5$  to  $10^8$  cells/test.

**eFluor<sup>™</sup> 450 is a replacement for Pacific Blue<sup>®</sup>. eFluor<sup>™</sup> 450 emits at 456 nm and is excited with the Violet laser (405 nm). Please make sure that your instrument is capable of detecting this fluorochrome.**

### References

Pellegrini W, Bresciani G, De Zorzi A, Marocolo D, Ungari M, Facchetti F. MMA monoclonal antibody is a superior anti-CD15 reagent for the diagnosis of classical Hodgkin's lymphoma. *Haematologica*. 2007 May;92(5):708-9.

Knapp, W., B. Dorken, et al. eds. 1989. *Leucocyte Typing IV: White Cell Differentiation Antigens*. Oxford University Press. New York.

### Related Products

48-4752 Mouse IgM Isotype Control eFluor<sup>®</sup> 450

Not for further distribution without written consent.

Copyright © 2000-2012 eBioscience, Inc.

Tel: 888.999.1371 or 858.642.2058 • Fax: 858.642.2046 • [www.ebioscience.com](http://www.ebioscience.com) •  
[info@ebioscience.com](mailto:info@ebioscience.com)