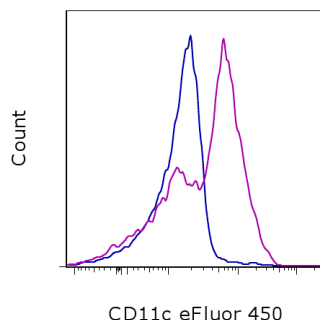


## Anti-Human CD11c eFluor® 450

**Catalog Number:** 48-0116

**Also known as:** Integrin alpha X, Integrin aX, ITGAX, p150/95, leu M5 alpha

**RUO: For Research Use Only. Not for use in diagnostic procedures.**



Staining of normal human peripheral blood cells with Mouse IgG1 K Isotype Control eFluor® 450 (cat. 48-4714) (blue histogram) or Anti-Human CD11c eFluor® 450 (purple histogram). Cells in the monocyte gate were used for analysis.

### Product Information



**Contents:** Anti-Human CD11c eFluor® 450

**Catalog Number:** 48-0116

**Clone:** 3.9

**Concentration:** 5 µL (0.5 µg)/test

**Host/Isotype:** Mouse IgG1, kappa

**HLDA Workshop:** III NL707



**Formulation:** aqueous buffer, 0.09% sodium azide, may contain carrier protein/stabilizer

**Temperature Limitation:** Store at 2-8°C. Do not freeze. Light-sensitive material.

**Batch Code:** Refer to vial

**Use By:** Refer to vial

**Contains sodium azide**

### Description

The 3.9 monoclonal antibody reacts with human CD11c, the 150 kDa integrin alpha X chain. CD11c non-covalently associates with beta 2 integrin to form the CD11c/CD18 heterodimer. This complex is expressed on monocytes, granulocytes, macrophages, NK, dendritic cells and subset of T and B lymphocytes. CD11c/CD18 binds to CD54, iC3b and fibrinogen and plays a role in leukocyte adhesive interactions.

### Applications Reported

This 3.9 antibody has been reported for use in flow cytometric analysis.

### Applications Tested

This 3.9 antibody has been pre-titrated and tested by flow cytometric analysis of normal human peripheral blood cells. This can be used at 5 µL (0.5 µg) per test. A test is defined as the amount (µg) of antibody that will stain a cell sample in a final volume of 100 µL. Cell number should be determined empirically but can range from 10<sup>5</sup> to 10<sup>8</sup> cells/test.

**eFluor® 450 is a replacement for Pacific Blue®. eFluor® 450 emits at 456 nm and is excited with the Violet laser (405 nm). Please make sure that your instrument is capable of detecting this fluorochrome.**

### References

McMichael, A.J., P.C.L. Beverly, et al. eds. (1987). Leucocyte Typing III: White Cell Differentiation Antigens. Oxford University Press. New York.

Knapp, W., B. Dorken, et al. eds. (1989). Leucocyte Typing IV: White Cell Differentiation Antigens. Oxford University Press. New York.

Schlossman, S., L. Bloumsell, et al. eds (1995). Leucocyte Typing V: White Cell Differentiation Antigens. Oxford University Press. New York.

### Related Products

Not for further distribution without written consent.

Copyright © 2000-2012 eBioscience, Inc.

Tel: 888.999.1371 or 858.642.2058 • Fax: 858.642.2046 • [www.ebioscience.com](http://www.ebioscience.com) •  
[info@ebioscience.com](mailto:info@ebioscience.com)

---

## Anti-Human CD11c eFluor® 450

**Catalog Number:** 48-0116

**Also known as:** Integrin alpha X, Integrin aX, ITGAX, p150/95, leu M5 alpha

**RUO: For Research Use Only. Not for use in diagnostic procedures.**

---

48-4714 Mouse IgG1 K Isotype Control eFluor® 450 (P3.6.2.8.1)