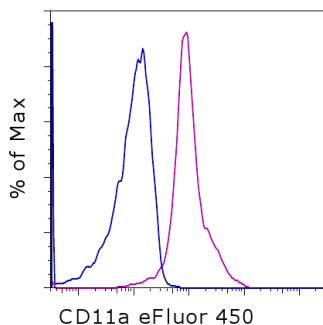


## Anti-Mouse CD11a eFluor® 450

**Catalog Number:** 48-0111

**Also known as:** Integrin alpha L, Lymphocyte Function-Associated Antigen

**RUO: For Research Use Only. Not for use in diagnostic procedures.**



Staining of BALB/c splenocytes with 0.06 ug of Rat IgG2a K Isotype Control eFluor® 450 (cat. 48-4321) (blue histogram) or 0.06 ug of Anti-Mouse CD11a eFluor® 450 (purple histogram). Cells in the lymphocyte gate were used for analysis.

### Product Information



**Contents:** Anti-Mouse CD11a eFluor® 450

**Catalog Number:** 48-0111

**Clone:** M17/4

**Concentration:** 0.2 mg/mL

**Host/Isotype:** Rat IgG2a, kappa



**Formulation:** aqueous buffer, 0.09% sodium azide, may contain carrier protein/stabilizer

**Temperature Limitation:** Store at 2-8°C. Do not freeze. Light-sensitive material.



**Batch Code:** Refer to vial



**Use By:** Refer to vial

### Description

The M17/4 monoclonal antibody reacts with mouse CD11a, the 180 kDa integrin alpha L, also known as the lymphocyte function associated antigen-1 (LFA-1) alpha chain. LFA-1, formed by non-covalent association of CD11a with CD18 (integrin beta 2), serves as an important adhesion molecule involved in lymphocyte and granulocyte function. CD54 (ICAM-1), CD102 (ICAM-2), and CD50 (ICAM-3) are ligands for LFA-1. CD11a is expressed by all leukocytes.

### Applications Reported

This M17/4 antibody has been reported for use in flow cytometric analysis.

### Applications Tested

This M17/4 antibody has been tested by flow cytometric analysis of mouse splenocytes. This can be used at less than or equal to 0.125 µg per test. A test is defined as the amount (µg) of antibody that will stain a cell sample in a final volume of 100 µL. Cell number should be determined empirically but can range from 10<sup>5</sup> to 10<sup>8</sup> cells/test. It is recommended that the antibody be carefully titrated for optimal performance in the assay of interest.

**eFluor® 450 is a replacement for Pacific Blue®. eFluor® 450 emits at 456 nm and is excited with the Violet laser (405 nm). Please make sure that your instrument is capable of detecting this fluorochrome.**

### References

Sanchez-Madrid F, Simon P, Thompson S, Springer TA. Mapping of antigenic and functional epitopes on the alpha- and beta-subunits of two related mouse glycoproteins involved in cell interactions, LFA-1 and Mac-1. J Exp Med. 1983 Aug 1;158(2):586-602.

Sanchez-Madrid F, Davignon D, Martz E, Springer TA. Sanchez-Madrid F, Davignon D, Martz E, Springer TA. Cell Immunol. 1982 Oct;73(1):1-11.

### Related Products

Not for further distribution without written consent.

Copyright © 2000-2012 eBioscience, Inc.

Tel: 888.999.1371 or 858.642.2058 • Fax: 858.642.2046 • [www.ebioscience.com](http://www.ebioscience.com) •  
[info@ebioscience.com](mailto:info@ebioscience.com)

---

## Anti-Mouse CD11a eFluor® 450

**Catalog Number:** 48-0111

**Also known as:** Integrin alpha L, Lymphocyte Function-Associated Antigen

**RUO: For Research Use Only. Not for use in diagnostic procedures.**

---

00-4222 Flow Cytometry Staining Buffer

48-4321 Rat IgG2a K Isotype Control eFluor® 450 (eBR2a)