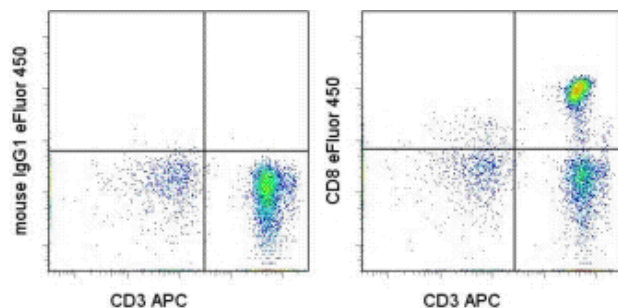


Anti-Human CD8a eFluor® 450 (Pacific Blue® replacement)

Catalog Number: 48-0088

Also Known As: CD8 alpha, leu-2a

RUO: For Research Use Only



Staining of normal human peripheral blood cells with Anti-Human CD3 APC (cat. 17-0038) and 0.25 ug of Mouse IgG1 K Isotype Control eFluor® 450 (cat. 48-4714) (left) or Anti-Human CD8a eFluor® 450 (right). Cells in the lymphocyte gate were used for analysis.

Product Information

Contents: Anti-Human CD8a eFluor® 450 (Pacific Blue® replacement)

REF **Catalog Number:** 48-0088

Clone: RPA-T8

Concentration: 5 uL (0.25 ug)/test

Host/Isotype: Mouse IgG1, kappa

HLDA Workshop: IV T171

Formulation: aqueous buffer, 0.09% sodium azide, may contain carrier protein/stabilizer

Temperature Limitation: Store at 2-8°C. Do not freeze. Light sensitive material.

LOT **Batch Code:** Refer to Vial

Use By: Refer to Vial

Caution, contains Azide

Description

The RPA-T8 monoclonal antibody reacts with the human CD8a molecule, an approximately 32-34 kDa cell surface receptor expressed either as a heterodimer with the CD8 beta chain (CD8 alpha/beta) or as a homodimer (CD8 alpha/alpha). A majority of thymocytes and a subpopulation of mature T cells and NK cells express CD8a. CD8 binds to MHC class I and through its association with protein tyrosine kinase p56lck plays a role in T-cell development and activation of mature T cells.

Applications Reported

This RPA-T8 antibody has been reported for use in flow cytometric analysis.

eFluor® 450 is a replacement for Pacific Blue®. eFluor® 450 emits at 456 nm and is excited with the Violet laser (405 nm). Please make sure that your instrument is capable of detecting this fluorochrome.

Applications Tested

This RPA-T8 antibody has been pre-titrated and tested by flow cytometric analysis of normal human peripheral blood cells. This can be used at 5 µl (0.25 µg)/per test. A test is defined as the amount (µg)/test of antibody that will stain a cell sample in a final volume of 100 µL. Cell number should be determined empirically but can range from 10⁵ to 10⁸ cells/test.

eFluor™ 450 is a replacement for Pacific Blue®. eFluor™ 450 emits at 456 nm and is excited with the Violet laser (405 nm). Please make sure that your instrument is capable of detecting this fluorochrome.

References

Knapp, W., B. Dorken, et al. eds. (1989). Leucocyte Typing IV: White Cell Differentiation Antigens. Oxford University Press. New York.
Schlossman, S., L. Bloumsell, et al. eds. (1995). Leucocyte Typing V: White Cell Differentiation Antigens. Oxford University Press. New York.

Kishimoto, T., A.E.G., von dem Borne, et al. eds. (1998). Leucocyte Typing VI: White Cell Differentiation Antigens. Garland Publishing, Inc. London.

Related Products

17-0038 Anti-Human CD3 APC (UCHT1)

48-4714 Mouse IgG1 K Isotype Control eFluor® 450 (P3.6.2.1)

Not for further distribution without written consent.

Copyright © 2000-2010 eBioscience, Inc.

Tel: 888.999.1371 or 858.642.2058 • Fax: 858.642.2046 • www.eBioscience.com • info@eBioscience.com