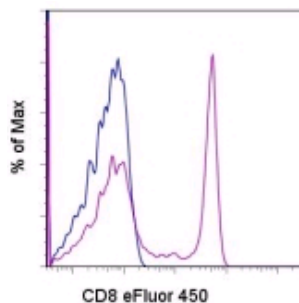


## Anti-Human CD8a eFluor® 450 (Pacific Blue® replacement)

Catalog Number: 48-0086

Also Known As: CD8 alpha, leu-2a


RUO: For Research Use Only



Staining of normal human peripheral blood cells with Mouse IgG2a  $\kappa$  Isotype Control eFluor® 450 (cat. 48-4724) (blue histogram) or Anti-Human CD8a eFluor® 450 (purple histogram). Cells in the lymphocyte gate were used for analysis.

### Product Information

Contents: Anti-Human CD8a eFluor® 450 (Pacific Blue® replacement)


 Catalog Number: 48-0086

Clone: OKT8 (OKT-8)


Concentration: 5  $\mu$ l (0.125  $\mu$ g)/test

Host/Isotype: Mouse IgG2a

Formulation: aqueous buffer, 0.09% sodium azide, may contain carrier protein/stabilizer

 Temperature Limitation: Store at 2-8°C. Do not freeze. Light sensitive material.

 Batch Code: Refer to Vial

 Use By: Refer to Vial

### Description

The OKT8 monoclonal antibody reacts with the human CD8a molecule, an approximately 32-34 kDa cell surface receptor expressed either as a heterodimer with the CD8  $\beta$  chain (CD8  $\alpha\beta$ ) or as a homodimer (CD8  $\alpha\alpha$ ). A majority of thymocytes and a subpopulation of mature T cells and NK cells express CD8a. CD8 binds to MHC class I and through its association with protein tyrosine kinase p56lck plays a role in T-cell development and activation of mature T cells. Preliminary testing indicates that OKT8 and two other mouse anti-human CD8 antibodies (clone RPA-T8, Cat. No.14-0088 and clone HIT8a, Cat. No.14-0089) do not compete with each other for binding to human peripheral blood leukocytes by flow cytometric analysis, suggesting that they do not bind to similar epitopes or block each other by steric hindrance.

### Applications Reported

This OKT8 (OKT-8) antibody has been reported for use in flow cytometric analysis.

### Applications Tested

This OKT8 (OKT-8) antibody has been pre-titrated and tested by flow cytometric analysis of normal human peripheral blood cells. This can be used at 5  $\mu$ l (0.125  $\mu$ g)/per test. A test is defined as the amount ( $\mu$ g)/test of antibody that will stain a cell sample in a final volume of 100  $\mu$ l. Cell number should be determined empirically but can range from  $10^5$  to  $10^8$  cells/test.

eFluor™ 450 is a replacement for Pacific Blue®. eFluor™ 450 emits at 456 nm and is excited with the Violet laser (405 nm). Please make sure that your instrument is capable of detecting this fluorochrome.

### References

Kay HD, Horwitz DA. 1980. Evidence by reactivity with hybridoma antibodies for a probable myeloid origin of peripheral blood cells active in natural cytotoxicity and antibody-dependent cell-mediated cytotoxicity. *J Clin Invest.* 66(4):847-51.

Sayos J, Wu C, Morra M, Wang N, Zhang X, Allen D, van Schaik S, Notarangelo L, Geha R, Roncarolo MG, Oettgen H, De Vries JE, Aversa G, Terhorst C. The X-linked lymphoproliferative-disease gene product SAP regulates signals induced through the co-receptor SLAM. *Nature.* 1998 Oct 1;395(6701):462-9. (OKT8, IP, PubMed)

Thomas Y, Sosman J, Irigoyen O, Friedman SM, Kung PC, Goldstein G, Chess L. 1980. Functional analysis of human T cell subsets defined by monoclonal antibodies. I. Collaborative T-T interactions in the immunoregulation of B cell differentiation. *J Immunol.* 125(6):2402-8.

Campanelli R, Palermo B, Garbelli S, Mantovani S, Lucchi P, Necker A, Lantelme E, Giachino C. 2002. Human CD8 co-receptor is strictly involved in MHC-peptide tetramer-TCR binding and T cell activation. *Int Immunol.* 14(1):39-44.

### Related Products

---

Not for further distribution without written consent.

Copyright © 2000-2010 eBioscience, Inc.

Tel: 888.999.1371 or 858.642.2058 • Fax: 858.642.2046 • [www.eBioscience.com](http://www.eBioscience.com) • [info@eBioscience.com](mailto:info@eBioscience.com)