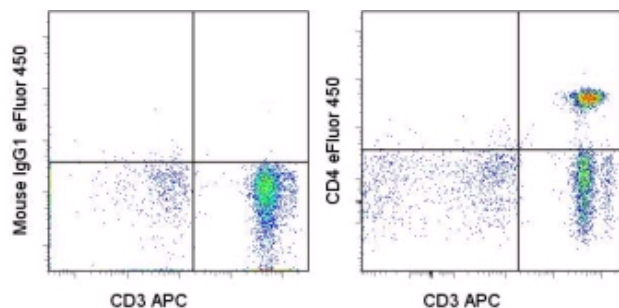


## Anti-Human CD4 eFluor<sup>®</sup> 450 (Pacific Blue<sup>®</sup> replacement)

Catalog Number: 48-0049

Also Known As: Leu-3, T4

RUO: For Research Use Only



Staining of normal human peripheral blood cells with Anti-Human CD3 APC (cat. 17-0038) and Mouse IgG1  $\kappa$  Isotype Control eFluor<sup>®</sup> 450 (cat. 48-4714) (left) or Anti-Human CD4 eFluor<sup>®</sup> 450 (right). Cells in the lymphocyte gate were used for analysis.

### Product Information

Contents: Anti-Human CD4 eFluor<sup>®</sup> 450 (Pacific Blue<sup>®</sup> replacement)

**REF** Catalog Number: 48-0049


Clone: RPA-T4

Concentration: 5  $\mu$ l (0.25  $\mu$ g)/test


Host/Isotype: Mouse IgG1,  $\kappa$


HLDA Workshop: IV T114

Formulation: aqueous buffer, 0.09% sodium azide, may contain carrier protein/stabilizer

 Temperature Limitation: Store at 2-8°C. Do not freeze. Light sensitive material.

**LOT** Batch Code: Refer to Vial

 Use By: Refer to Vial

 Caution, contains Azide

### Description

The RPA-T4 monoclonal antibody reacts with human CD4, a 59 kDa cell surface receptor expressed by a majority of thymocytes, subpopulation of mature T cells (T-helper cells) and in low levels on monocytes. CD4 is a receptor for the human immunodeficiency virus (HIV). RPA-T4 blocks HIV binding and mixed lymphocyte reaction. The RPA-T4 antibody recognizes a different epitope than the OKT4 monoclonal antibody, and these antibodies do not cross-block binding to each other's respective epitopes.

### Applications Reported

This RPA-T4 antibody has been reported for use in flow cytometric analysis.

eFluor<sup>®</sup> 450 is a replacement for Pacific Blue<sup>®</sup>. eFluor<sup>®</sup> 450 emits at 456 nm and is excited with the Violet laser (405 nm). Please make sure that your instrument is capable of detecting this fluorochrome.

### Applications Tested

This RPA-T4 antibody has been pre-titrated and tested by flow cytometric analysis of human peripheral mononuclear cells. This can be used at 5  $\mu$ l (0.25  $\mu$ g)/per test. A test is defined as the amount ( $\mu$ g)/test of antibody that will stain a cell sample in a final volume of 100  $\mu$ l. Cell number should be determined empirically but can range from 10<sup>5</sup> to 10<sup>8</sup> cells/test.

eFluor<sup>TM</sup> 450 is a replacement for Pacific Blue<sup>®</sup>. eFluor<sup>TM</sup> 450 emits at 456 nm and is excited with the Violet laser (405 nm). Please make sure that your instrument is capable of detecting this fluorochrome.

### References

Knapp, W., B. Dorken, et al. eds. (1989). Leucocyte Typing IV: White Cell Differentiation Antigens. Oxford University Press. New York.

### Related Products

48-4714 Mouse IgG1 K Isotype Control eFluor<sup>®</sup> 450 (Pacific Blue<sup>®</sup> replacement)

