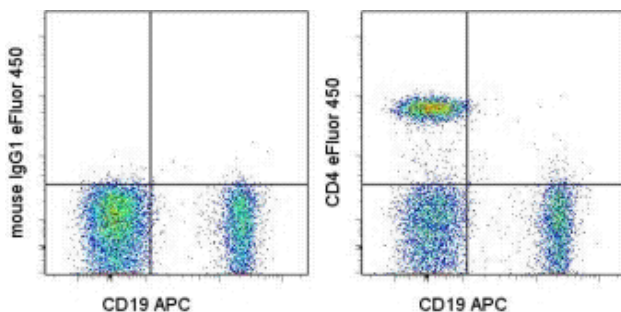


## Anti-Human CD4 eFluor® 450

**Catalog Number:** 48-0047

**Also Known As:** Leu-3, T4

**RUO: For Research Use Only. Not for use in diagnostic procedures.**



Staining of normal human peripheral blood cells with Anti-Human CD19 APC (cat. 17-0199) and Mouse IgG1 K Isotype Control eFluor® 450 (cat. 48-4714) (left) or Anti-Human CD4 eFluor® 450 (cat. 48-4714) (right). Cells in the lymphocyte gate were used for analysis.

### Product Information

**Contents:** Anti-Human CD4 eFluor® 450

**REF** **Catalog Number:** 48-0047

**Clone:** SK3 (SK-3)

**Concentration:** 5 µL (0.125 µg)/test

**Host/Isotype:** Mouse IgG1, kappa

**Formulation:** aqueous buffer, 0.09% sodium azide, may contain carrier protein/stabilizer



**Temperature Limitation:** Store at 2-8°C. Do not freeze. Light sensitive material.



**Batch Code:** Refer to Vial



**Use By:** Refer to Vial



**Caution, contains Azide**

### Description

The SK3 monoclonal antibody reacts with human CD4, a 59-kDa cell surface receptor expressed by a majority of thymocytes, a subpopulation of mature T helper cells, and, in low levels, monocytes. CD4 is a receptor for the human immunodeficiency virus (HIV). SK3 blocks HIV binding and mixed lymphocyte reaction. The SK3 and RPA-T4 monoclonal antibodies do not cross-block binding, suggesting recognition of distinct epitopes.

### Applications Reported

This SK3 (SK-3) antibody has been reported for use in flow cytometric analysis.

**eFluor® 450 is a replacement for Pacific Blue®. eFluor® 450 emits at 456 nm and is excited with the Violet laser. Please make sure that your instrument is capable of detecting this fluorochrome.**

### Applications Tested

This SK3 antibody has been pre-titrated and tested by flow cytometric analysis of normal human peripheral blood cells. This can be used at 5 µL (0.125 µg)/per test. A test is defined as the amount (µg)/test of antibody that will stain a cell sample in a final volume of 100 µL. Cell number should be determined empirically but can range from 10<sup>5</sup> to 10<sup>8</sup> cells/test.

**eFluor™ 450 is a replacement for Pacific Blue®. eFluor™ 450 emits at 456 nm and is excited with the Violet laser (405 nm). Please make sure that your instrument is capable of detecting this fluorochrome.**

### References

Knapp W, Dorken B, et al, eds. Leucocyte Typing IV: White Cell Differentiation Antigens. Oxford University Press. New York. 1989.

Bernard A, Boumsell L, Hill C. Joint report of the first international workshop on human leucocyte differentiation antigens by the investigators of the participating laboratories. In: Bernard A, Boumsell L, Dausset J, Milstein C, Schlossman SF, eds. Leucocyte Typing. New York, NY: Springer-Verlag; 1984:9-108.

### Related Products

12-0088 Anti-Human CD8a PE (RPA-T8)

17-0199 Anti-Human CD19 APC (HIB19)

46-0037 Anti-Human CD3 PerCP-eFluor® 710 (OKT3)

48-4714 Mouse IgG1 K Isotype Control eFluor® 450 (P3.6.2.8.1)

Not for further distribution without written consent.

Copyright © 2000-2012 eBioscience, Inc.

Tel: 888.999.1371 or 858.642.2058 • Fax: 858.642.2046 • [www.eBioscience.com](http://www.eBioscience.com) • [info@eBioscience.com](mailto:info@eBioscience.com)