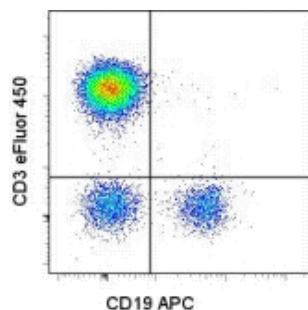


## Anti-Human CD3 eFluor<sup>®</sup> 450 (Pacific Blue<sup>®</sup> replacement)

**Catalog Number:** 48-0038

**Also Known As:** Leu-4, T3

**RUO: For Research Use Only**



Staining of normal human peripheral blood cells with Anti-Human CD19 APC (cat. 17-0199) and Anti-Human CD3 eFluor<sup>®</sup> 450. Cells in the lymphocyte gate were used for analysis.

### Product Information

**Contents:** Anti-Human CD3 eFluor<sup>®</sup> 450 (Pacific Blue<sup>®</sup> replacement)

**REF** **Catalog Number:** 48-0038

**Clone:** UCHT1

**Concentration:** 5 µL (0.5 µg)/test

**Host/Isotype:** Mouse IgG1, kappa

**HLDA Workshop:** III 471

**Formulation:** aqueous buffer, 0.09% sodium azide, may contain carrier protein/stabilizer

**Temperature Limitation:** Store at 2-8°C. Do not freeze. Light sensitive material.

**LOT** **Batch Code:** Refer to Vial

**Use By:** Refer to Vial

**Caution, contains Azide**

### Description

The UCHT1 monoclonal antibody reacts with human CD3ε, a 20 kDa subunit of the TCR complex. Along with the other CD3 subunits gamma and delta, the epsilon chain is required for proper assembly, trafficking and surface expression of the TCR complex. CD3 is expressed by thymocytes in a developmentally regulated manner and by all mature T cells. Crosslinking of TCR via immobilized UCHT1 initiates an intracellular biochemical pathway resulting in cellular activation and proliferation.

### Applications Reported

This UCHT1 antibody has been reported for use in flow cytometric analysis.

**eFluor<sup>®</sup> 450 is a replacement for Pacific Blue<sup>®</sup>. eFluor<sup>®</sup> 450 emits at 456 nm and is excited with the Violet laser. Please make sure that your instrument is capable of detecting this fluorochrome.**

### Applications Tested

This UCHT1 antibody has been pre-titrated and tested by flow cytometric analysis of normal human peripheral blood cells. This can be used at 5 µL (0.5 µg) per test. A test is defined as the amount (µg) of antibody that will stain a cell sample in a final volume of 100 µL. Cell number should be determined empirically but can range from 10<sup>5</sup> to 10<sup>8</sup> cells/test.

**eFluor<sup>®</sup> 450 is a replacement for Pacific Blue<sup>®</sup>. eFluor<sup>®</sup> 450 emits at 456 nm and is excited with the Violet laser (405 nm). Please make sure that your instrument is capable of detecting this fluorochrome.**

### References

Senechal B, Elain G, et al. 2007. Expansion of regulatory T cells in patients with Langerhans cell histiocytosis. PLoS Med. 14;4 (8):e253. (IHC frozen, PubMed)

Baeten D, De Keyser F, et al. 2004. Tumour necrosis factor alpha independent disease mechanisms in rheumatoid arthritis: a histopathological study on the effect of infliximab on rheumatoid nodules. Ann Rheum Dis. 63(5):489-93. (IHC frozen, PubMed)

Knapp, W., B. Dorken, et al. eds. (1989). Leucocyte Typing IV: White Cell Differentiation Antigens. Oxford University Press. New York.

Pollard K, Lunny D, et al. 1987. Fixation, processing, and immunochemical reagent effects on preservation of T-lymphocyte surface membrane antigens in paraffin-embedded tissue. J Histochem Cytochem. 35(11):1329-38. (IHC paraffin and frozen, PubMed)

McMichael, A.J., P.C.L. Beverly, et al. eds. (1987). Leucocyte Typing III: White Cell Differentiation Antigens. Oxford University Press. New York.

**Related Products**

11-0199 Anti-Human CD19 FITC (HIB19)

17-0199 Anti-Human CD19 APC (HIB19)

48-0037 Anti-Human CD3 eFluor® 450 (Pacific Blue® replacement) (OKT3)

48-4714 Mouse IgG1 K Isotype Control eFluor® 450 (P3.6.2.1)

---

Not for further distribution without written consent.

Copyright © 2000-2010 eBioscience, Inc.

Tel: 888.999.1371 or 858.642.2058 • Fax: 858.642.2046 • [www.eBioscience.com](http://www.eBioscience.com) • [info@eBioscience.com](mailto:info@eBioscience.com)