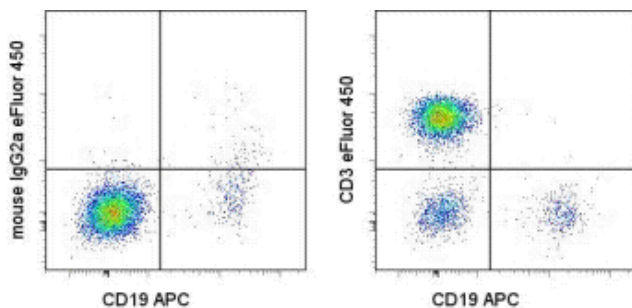


Anti-Human CD3 eFluor[®] 450

Catalog Number: 48-0037

Also Known As: Leu-4, T3

RUO: For Research Use Only. Not for use in diagnostic procedures.



Staining of normal human peripheral blood cells with Anti-Human CD19 APC (cat. 17-0199) and Mouse IgG2a K Isotype Control eFluor[®] 450 (cat. 48-4724) (left) or Anti-Human CD3 eFluor[®] 450 (right). Cells in the lymphocyte gate were used for analysis.

Product Information

Contents: Anti-Human CD3 eFluor[®] 450

REF **Catalog Number:** 48-0037

Clone: OKT3

Concentration: 5 μ L (1 μ g)/test

Host/Isotype: Mouse IgG2a, kappa

HLDA Workshop: VI T6T-R3

Formulation: aqueous buffer, 0.09% sodium azide, may contain carrier protein/stabilizer

Temperature Limitation: Store at 2-8°C. Do not freeze. Light sensitive material.

LOT **Batch Code:** Refer to Vial

Use By: Refer to Vial

Caution, contains Azide

Description

The OKT3 monoclonal antibody reacts with an epitope on the epsilon-subunit within the human CD3 complex. The OKT3 antibody has been reported to have potent immunosuppressive properties in vivo and has been proven effective in the treatment of renal, heart and liver allograft rejection. The CD3 subunits, gamma, delta, and epsilon chains, are required for proper assembly, trafficking and surface expression of the TCR complex. CD3 is expressed by thymocytes in a developmentally regulated manner and by all mature T cells. Crosslinking of TCR initiates an intracellular biochemical pathway resulting in cellular activation and proliferation.

Applications Reported

This OKT3 antibody has been reported for use in flow cytometric analysis.

eFluor[®] 450 is a replacement for Pacific Blue[®]. eFluor[®] 450 emits at 456 nm and is excited with the Violet laser (405 nm). Please make sure that your instrument is capable of detecting this fluorochoime.

Applications Tested

This OKT3 antibody has been pre-titrated and tested by flow cytometric analysis of normal human peripheral blood cells. This can be used at 5 μ L (1 μ g) per test. A test is defined as the amount (μ g) of antibody that will stain a cell sample in a final volume of 100 μ L. Cell number should be determined empirically but can range from 10⁵ to 10⁸ cells/test.

eFluor[®] 450 is a replacement for Pacific Blue[®]. eFluor[®] 450 emits at 456 nm and is excited with the Violet laser (405 nm). Please make sure that your instrument is capable of detecting this fluorochoime.

References

Tanaka Y, Koyanagi Y, Tanaka R, Kumazawa Y, Nishimura T, Yamamoto N. Productive and lytic infection of human CD4+ type 1 helper T cells with macrophage-tropic human immunodeficiency virus type 1. J Virol. 1997 Jan;71(1):465-70.

Hutchcroft JE, Tsai B, Bierer BE. Differential phosphorylation of the T lymphocyte costimulatory receptor CD28. J Biol Chem. 1996 Jun 7;271(23):13362-70.

Adair JR, Athwal DS, Bodmer MW, Bright SM, Collins AM, Pulito VL, Rao PE, Reedman R, Rothermel AL, Xu D, et al. Humanization of the murine anti-human CD3 monoclonal antibody OKT3. Hum Antibodies Hybridomas. 1994;5(1-2):41-7.

Kung PC and Goldstein G. Complement-fixing monoclonal antibody to human T cells, and methods of preparing same. U.S. Pat.

4,361,549 dated Nov. 30, 1982.

Hoffman RA, Kung PC, Hansen WP, Goldstein G. Simple and rapid measurement of human T lymphocytes and their subclasses in peripheral blood. Proc Natl Acad Sci U S A. 1980 Aug;77(8):4914-7.

Related Products

17-0199 Anti-Human CD19 APC (HIB19)

48-4724 Mouse IgG2a K Isotype Control eFluor® 450

Not for further distribution without written consent.

Copyright © 2000-2010 eBioscience, Inc.

Tel: 888.999.1371 or 858.642.2058 • Fax: 858.642.2046 • www.eBioscience.com • info@eBioscience.com