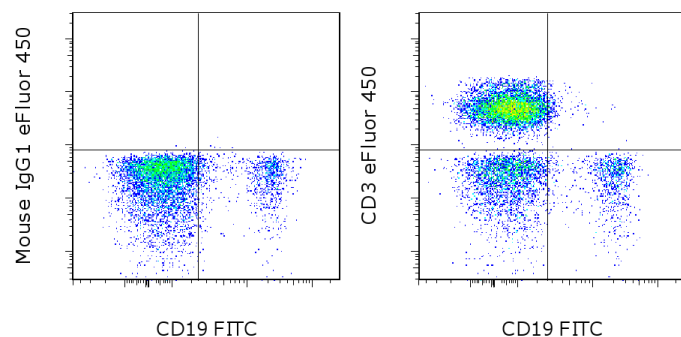


## Anti-Human CD3 eFluor<sup>®</sup> 450

**Catalog Number:** 48-0036

**Also known as:** Leu-4, T3

**RUO: For Research Use Only. Not for use in diagnostic procedures.**



Staining of normal human peripheral blood cells with Anti-Human CD19 FITC (cat. 11-0199) and Mouse IgG1 K Isotype Control eFluor<sup>®</sup> 450 (cat. 48-4714) (left) or Anti-Human CD3 eFluor<sup>®</sup> 450 (right). Cells in the lymphocyte gate were used for analysis.

### Product Information

**Contents:** Anti-Human CD3 eFluor<sup>®</sup> 450

**REF** **Catalog Number:** 48-0036

**Clone:** SK7

**Concentration:** 5  $\mu$ L (0.25  $\mu$ g)/test

**Host/Isotype:** Mouse IgG1, kappa

**Formulation:** aqueous buffer, 0.09% sodium

azide, may contain carrier protein/stabilizer

**Temperature Limitation:** Store at 2-8°C. Do not freeze. Light-sensitive material.

**Batch Code:** Refer to vial

**Use By:** Refer to vial

**Contains sodium azide**



### Description

The SK7 monoclonal antibody reacts with human and chimpanzee CD3 $\epsilon$ , a 20 kDa subunit of the TCR complex. Along with the other CD3 subunits gamma and delta, the epsilon chain is required for proper assembly, trafficking and surface expression of the TCR complex. CD3 is expressed by thymocytes in a developmentally regulated manner and by all mature T cells. The SK7 and UCHT1 monoclonal antibodies cross-block binding, suggesting recognition of overlapping epitopes.

### Applications Reported

This SK7 antibody has been reported for use in flow cytometric analysis.

### Applications Tested

This SK7 antibody has been pre-titrated and tested by flow cytometric analysis of normal human peripheral blood cells. This can be used at 5  $\mu$ L (0.25  $\mu$ g) per test. A test is defined as the amount ( $\mu$ g) of antibody that will stain a cell sample in a final volume of 100  $\mu$ L. Cell number should be determined empirically but can range from  $10^5$  to  $10^8$  cells/test.

**eFluor<sup>®</sup> 450 is a replacement for Pacific Blue<sup>®</sup>. eFluor<sup>®</sup> 450 emits at 456 nm and is excited with the Violet laser (405 nm). Please make sure that your instrument is capable of detecting this fluorochrome.**

### References

Kap YS, van Meurs M, van Driel N, Koopman G, Melief MJ, Brok HP, Laman JD, 't Hart BA. A monoclonal antibody selection for immunohistochemical examination of lymphoid tissues from non-human primates. *J Histochem Cytochem.* 2009 Dec;57(12):1159-67. (SK7.10, IHC frozen, chimpanzee, PubMed)

van Dongen JJ, Krissansen GW, Wolvers-Tettero IL, Comans-Bitter WM, Adriaansen HJ, Hooijkaas H, van Wering ER, Terhorst C. Cytoplasmic expression of the CD3 antigen as a diagnostic marker for immature T-cell malignancies. *Blood.* 1988 Mar;71(3):603-12

Not for further distribution without written consent.

Copyright © 2000-2012 eBioscience, Inc.

Tel: 888.999.1371 or 858.642.2058 • Fax: 858.642.2046 • [www.ebioscience.com](http://www.ebioscience.com) •  
[info@ebioscience.com](mailto:info@ebioscience.com)

---

## Anti-Human CD3 eFluor® 450

**Catalog Number:** 48-0036

**Also known as:** Leu-4, T3

**RUO: For Research Use Only. Not for use in diagnostic procedures.**

---

### Related Products

00-4222 Flow Cytometry Staining Buffer

11-0199 Anti-Human CD19 FITC (HIB19)

48-4714 Mouse IgG1 K Isotype Control eFluor® 450 (P3.6.2.8.1)

---

Not for further distribution without written consent.

Copyright © 2000-2012 eBioscience, Inc.

Tel: 888.999.1371 or 858.642.2058 • Fax: 858.642.2046 • [www.ebioscience.com](http://www.ebioscience.com) •  
[info@ebioscience.com](mailto:info@ebioscience.com)