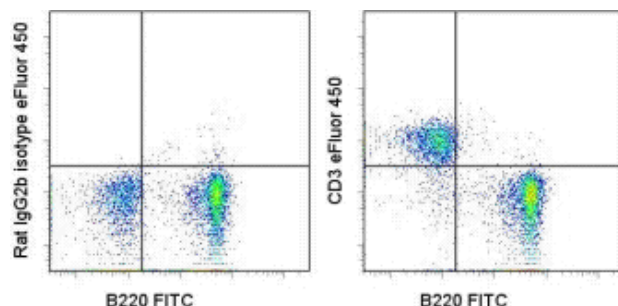


## Anti-Mouse CD3 eFluor® 450

Catalog Number: 48-0032

RUO: For Research Use Only. Not for use in diagnostic procedures.



Staining of C57Bl/6 splenocytes with FITC anti-mo/hu B220 (RA3-6B2) (cat. 11-0452) and 0.25 ug of eFluor® 450 Rat IgG2b Isotype Control (cat. 48-4031) (left) or 0.25 ug of eFluor® 450 anti-mouse CD3 (17A2) (right). Total viable cells were used for analysis.

### Product Information

**Contents:** Anti-Mouse CD3 eFluor® 450

**REF** **Catalog Number:** 48-0032

**Clone:** 17A2

**Concentration:** 0.2 mg/mL

**Host/Isotype:** Rat IgG2b, kappa

**Formulation:** aqueous buffer, 0.09% sodium azide, may contain carrier protein/stabilizer

**Temperature Limitation:** Store at 2-8°C. Do not freeze. Light sensitive material.

**LOT** **Batch Code:** Refer to Vial

**Use By:** Refer to Vial

**Caution, contains Azide**

### Description

The 17A2 monoclonal antibody reacts with the mouse CD3 complex. CD3 subunits gamma, delta and epsilon are required for proper assembly, trafficking and surface expression of the TCR complex. CD3 is expressed by thymocytes in a developmentally regulated manner and by all mature T cells. Binding of 17A2 to CD3 initiates the intracellular biochemical pathway resulting in cellular activation and proliferation.

### Applications Reported

This 17A2 antibody has been reported for use in flow cytometric analysis.

**eFluor® 450 is a replacement for Pacific Blue®. eFluor® 450 emits at 456 nm and is excited with the Violet laser. Please make sure that your instrument is capable of detecting this fluorochrome.**

### Applications Tested

This 17A2 antibody has been tested by flow cytometric analysis of mouse splenocytes. This can be used at less than or equal to 0.5 µg per test. A test is defined as the amount (µg) of antibody that will stain a cell sample in a final volume of 100 µL. Cell number should be determined empirically but can range from 10<sup>5</sup> to 10<sup>8</sup> cells/test. It is recommended that the antibody be carefully titrated for optimal performance in the assay of interest.

**eFluor™ 450 is a replacement for Pacific Blue®. eFluor™ 450 emits at 456 nm and is excited with the Violet laser (405 nm). Please make sure that your instrument is capable of detecting this fluorochrome.**

### References

Zhang Y, McCormick LL, Desai SR, Wu C, Gilliam AC. Murine sclerodermatous graft-versus-host disease, a model for human scleroderma: cutaneous cytokines, chemokines, and immune cell activation. J Immunol. 2002 Mar 15;168(6):3088-98.(17A2, IH/F, PubMed)

Miescher, G. C., M. Schreyer, et al. Production and characterization of a rat monoclonal antibody against the murine CD3 molecular complex. Immunol Lett. 1989; 23(2): 113-8.

### Related Products

11-0452 Anti-Human/Mouse CD45R (B220) FITC (RA3-6B2)

48-4031 Rat IgG2b K Isotype Control eFluor® 450

---

Not for further distribution without written consent.

Copyright © 2000-2010 eBioscience, Inc.

Tel: 888.999.1371 or 858.642.2058 • Fax: 858.642.2046 • [www.eBioscience.com](http://www.eBioscience.com) • [info@eBioscience.com](mailto:info@eBioscience.com)