

Product Data Sheet

Purified anti-human CD49a

Catalog # / Size: 328302 / 100 µg

Clone: TS2/7

Isotype: Mouse IgG1, κ

Immunogen: Human CTL line

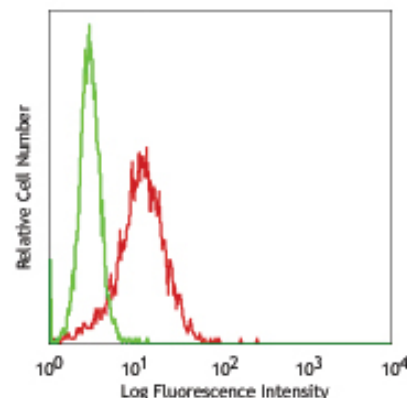
Reactivity: Human

Preparation: The antibody was purified by affinity chromatography.

Formulation: Phosphate-buffered solution, pH 7.2, containing 0.09% sodium azide.

Concentration: 0.5 mg/ml

Storage: The antibody solution should be stored undiluted at 4°C.



Human cervical cancer cell line, Hela, stained with purified TS2/7, followed by anti-mouse IgG FITC

Applications:

Applications: FC - Quality tested

Recommended Usage: Each lot of this antibody is quality control tested by immunofluorescent staining with flow cytometric analysis. For immunofluorescent staining, the suggested use of this reagent is ≤0.5 µg per million cells in 100 µl volume. It is recommended that the reagent be titrated for optimal performance for each application.

Application Notes: Additional reported applications include: immunoprecipitation (1) and immunohistochemical staining (1) of acetone-fixed frozen tissue sections

Application References: 1. Hemler ME, *et al.* 1984. *J. Immunol.* 132:3011
 2. Hemler ME, *et al.* 1985. *J. Biol. Chem.* 260:15246

Description: CD49a is a 200 kD type I transmembrane glycoprotein also known as α₁ integrin, VLA-1 α chain, or Integrin α₁. It associates with CD29 (β₁ integrin) to form VLA-1 complex, a collagen IV and alminin-1 receptor and that is expressed on activated T cells, monocytes, NK cells, smooth muscle cells, neuronal cells, fibroblasts, and mesenchymal cells. CD49a is an adhesion molecule and is involved in the regulation of leukocyte migration, T cell proliferation, and cytokine production.

Antigen References: 1. Zola H, *et al.* Eds. 2007. *Leukocyte and Stromal Cell Molecules: The CD Markers*. Wiley-Liss Press. p122
 2. Boiret N, *et al.* 2005. *Exp. Hematol.* 33:219

Related Products:

Product
 Purified Mouse IgG1, κ Isotype Ctrl
 Cell Staining Buffer
 RBC Lysis Buffer (10X)

Clone
 MG1-45

Application
 FC, ICC, ICFC, IF, IHC, IP, WB
 FC, ICC, ICFC
 FC, ICFC



For research use only. Not for diagnostic use. Not for resale. BioLegend will not be held responsible for patent infringement or other violations that may occur with the use of our products.



*These products may be covered by one or more Limited Use Label Licenses (see the BioLegend Catalog or our website, www.biollegend.com/ordering#license). BioLegend products may not be transferred to third parties, resold, modified for resale, or used to manufacture commercial products, reverse engineer functionally similar materials, or to provide a service to third parties without written approval of BioLegend. By use of these products you accept the terms and conditions of all applicable Limited Use Label Licenses. Unless otherwise indicated, these products are for research use only and are not intended for human or animal diagnostic, therapeutic or commercial use.