

Product Data Sheet

PE anti-human CD49e

Catalog # / Size: 328009 / 25 tests
328010 / 100 tests

Clone: NKI-SAM-1

Isotype: Mouse IgG2b, κ

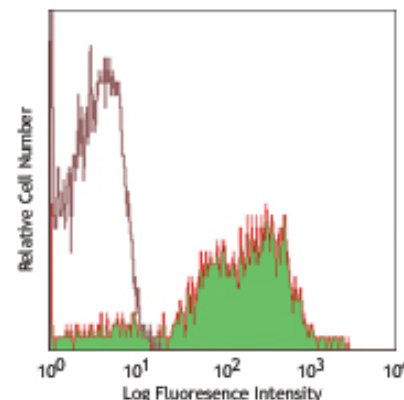
Immunogen: U937 cells

Reactivity: Human, **Cross-Reactivity:** Cynomolgus Macaque

Preparation: The antibody was purified by affinity chromatography, and conjugated with PE under optimal conditions. The solution is free of unconjugated PE and unconjugated antibody.

Formulation: Phosphate-buffered solution, pH 7.2, containing 0.09% sodium azide and 0.2% (w/v) BSA (origin USA).

Storage: The antibody solution should be stored undiluted at 4°C and protected from prolonged exposure to light. **Do not freeze.**



Human peripheral blood lymphocytes stained with NKI-Sam-1 PE

Applications:

Applications: FC - Quality tested

Recommended Usage: Each lot of this antibody is quality control tested by immunofluorescent staining with flow cytometric analysis. **Test size products are transitioning from 20 μ l to 5 μ l per test.** Please check your vial or your CoA to find the suggested use of this reagent per million cells in 100 μ l staining volume or per 100 μ l of whole blood. It is recommended that the reagent be titrated for optimal performance for each application. Read more at www.biolegend.com/testsize regarding the test size change.

Application Notes: Additional reported (for the relevant formats) applications include: immunohistochemical staining of acetone-fixed frozen sections, immunoprecipitation, and inhibition of α 5 integrin mediated cell adhesion. The LEAF™ purified antibody (Endotoxin <0.1 EU/ μ g, Azide-Free, 0.2 μ m filtered) is recommended for functional assays (Cat. No. 328004).

Application References: 1. Yoshino N, *et al.* 2000. *Exp. Anim. (Tokyo)* 49:97. (FC)

Description: CD49e is a type I integral membrane glycoprotein, known as α 5 integrin, VLA-5 α chain. It forms noncovalent heterodimer with integrin β 1 (CD29). CD49e contains two disulfide-linked subunits of 135 kD and 24 kD, and is mainly expressed on thymocytes, activated lymphocytes, endothelial cells, osteoblasts, melanoma, and some myeloid leukemia cells. CD49e/CD29 complex binds to fibronectin and neural adhesion molecule L1. It mediates monocytes migration, involves in the regulation of cells survival and apoptosis, and co-stimulates T cell activation.

Antigen References: 1. Tran Van Nhieu GT and Isberg RR. 1991. *J. Biol. Chem.* 266:24367.
2. Isaji T, *et al.* 2006. *J. Biol. Chem.* 281:33258.

Related Products:

Product
PE Mouse IgG2b, κ Isotype Ctrl
Cell Staining Buffer
RBC Lysis Buffer (10X)
Human TruStain FcX™ (Fc Receptor Blocking Solution)

Clone
MPC-11

Application
FC, ICFC
FC, ICC, ICFC
FC, ICFC
FC, ICC, ICFC



For research use only. Not for diagnostic use. Not for resale. BioLegend will not be held responsible for patent infringement or other violations that may occur with the use of our products.



*These products may be covered by one or more Limited Use Label Licenses (see the BioLegend Catalog or our website, www.biolegend.com/ordering#license). BioLegend products may not be transferred to third parties, resold, modified for resale, or used to manufacture commercial products, reverse engineer functionally similar materials, or to provide a service to third parties without written approval of BioLegend. By use of these products you accept the terms and conditions of all applicable Limited Use Label Licenses. Unless otherwise indicated, these products are for research use only and are not intended for human or animal diagnostic, therapeutic or commercial use.