

Product Data Sheet

Biotin anti-human CD47

Catalog # / Size: 323104 / 100 µg

Clone: CC2C6

Isotype: Mouse IgG1, κ

Immunogen: CCRF-CEM T-cell line

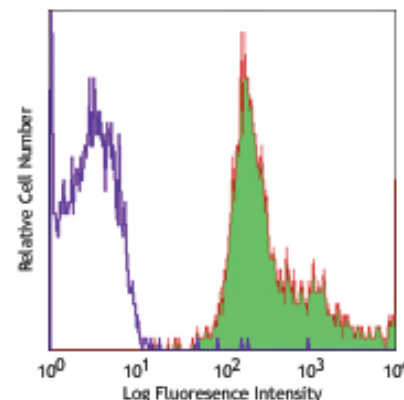
Reactivity: Human

Preparation: The antibody was purified by affinity chromatography, and conjugated with biotin under optimal conditions. The solution is free of unconjugated biotin.

Formulation: Phosphate-buffered solution, pH 7.2, containing 0.09% sodium azide.

Concentration: 0.5 mg/ml

Storage: The antibody solution should be stored undiluted at 4°C. **Do not freeze.**



Human peripheral blood lymphocytes stained with biotinylated CC2C6, followed by Sav-PE

Applications:

Applications: FC - Quality tested

Recommended Usage: Each lot of this antibody is quality control tested by immunofluorescent staining with flow cytometric analysis. For immunofluorescent staining, the suggested use of this reagent is ≤2.0 µg per million cells in 100 µl volume. It is recommended that the reagent be titrated for optimal performance for each application.

Application Notes: The CC2C6 monoclonal antibody can block the binding of HCD47 antibody to CD47.

Application References: 1. Seiffert M, *et al.* 1999. *Blood* 94:3633.

Description: CD47 also known as Rh-associated protein, gp42, integrin-associated protein (IAP), and neurophilin, is a 42-52 kD member of the immunoglobulin superfamily containing a five-pass transmembrane attachment. Two splice variants have been described in the cytoplasmic tail, the shorter form is expressed in bone-marrow-derived cells, endothelial cells, and fibroblasts while the longer form is expressed by neural tissues. CD47 expression is widely distributed in hematopoietic cells including thymocytes, T cells, B cells, monocytes, platelets, and erythrocytes as well as epithelial cells, endothelial cells, fibroblasts, and neural tissues. CD47 functions as an adhesion molecule and thrombospondin receptor and is non-covalently associated with β3 integrins CD51/CD61, CD41/CD61. Thrombospondin is a ligand for CD47; in the absence of CD47 mice show defects in host defense and β3 integrin-dependent ligand binding, migration, and cellular activation. CD47 is also part of the Rh complex on erythrocytes. The CC2C6 antibody recognizes human CD47 and has been shown to be useful for flow cytometry.

Antigen References: 1. Anstee DJ, *et al.* 1995. In *Leucocyte Typing V* (Schlossman ed.) Oxford University Press Oxford pp233-234.
 2. Brown E, *et al.* 1990. *J. Cell Biol.* 111:2785.
 3. Gao AG, *et al.* 1996. *J. Biol. Chem.* 271:21.
 4. Lindberg FP, *et al.* 1994. *J. Biol. Chem.* 269:1567.

Related Products:

Product
 Biotin Mouse IgG1, κ Isotype Ctrl
 APC Streptavidin
 APC/Cy7 Streptavidin
 PE Streptavidin
 PE/Cy7 Streptavidin
 Cell Staining Buffer
 Human TruStain FcX™ (Fc Receptor Blocking Solution)

Clone
 MOPC-21

Application
 FC, ICFC
 FC, ICFC
 FC, ICFC
 FC, ICFC
 FC, ICFC
 FC, ICC, ICFC
 FC, ICC, ICFC



For research use only. Not for diagnostic use. Not for resale. BioLegend will not be held responsible for patent infringement or other violations that may occur with the use of our products.



*These products may be covered by one or more Limited Use Label Licenses (see the BioLegend Catalog or our website, www.biollegend.com/ordering#license). BioLegend products may not be transferred to third parties, resold, modified for resale, or used to manufacture commercial products, reverse engineer functionally similar materials, or to provide a service to third parties without written approval of BioLegend. By use of these products you accept the terms and conditions of all applicable Limited Use Label Licenses. Unless otherwise indicated, these products are for research use only and are not intended for human or animal diagnostic, therapeutic or commercial use.