

FITC anti-human CD46

Catalog # / Size: 315304 / 100 tests

Clone: MEM-258

Isotype: Mouse IgG1, κ

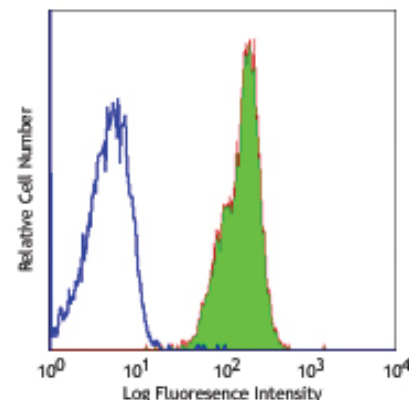
Immunogen: HPB-ALL T cell line

Reactivity: Human

Preparation: The antibody was purified by affinity chromatography, and conjugated with FITC under optimal conditions. The solution is free of unconjugated FITC.

Formulation: Phosphate-buffered solution, pH 7.2, containing 0.09% sodium azide and 0.2% (w/v) BSA (origin USA).

Storage: The antibody solution should be stored undiluted at 4°C and protected from prolonged exposure to light. **Do not freeze.**



Human peripheral blood lymphocytes stained with MEM-258 FITC

Applications:

Applications: FC - Quality tested

Recommended Usage: Each lot of this antibody is quality control tested by immunofluorescent staining with flow cytometric analysis. **Test size products are transitioning from 20 μ l to 5 μ l per test.** Please check your vial or your CoA to find the suggested use of this reagent per million cells in 100 μ l staining volume or per 100 μ l of whole blood. It is recommended that the reagent be titrated for optimal performance for each application. Read more at www.biolegend.com/testsize regarding the test size change.

Application Notes: Clone MEM-258 recognizes an epitope on the SCR4 (membrane-proximal SCR) domain of CD46. Additional reported applications (for the relevant formats) include: immunoprecipitation, Western blotting (non-reducing).

Application References:

1. Kishimoto T, *et al.* Eds. 1997. Leucocyte Typing VI. Garland Publishing Inc. London.
2. Kickler K, *et al.* 2012. *J Immunol.* 188:5303. PubMed.
3. Bach P, *et al.* 2013. *Cancer Res.* 73:865. PubMed.

Description: CD46 is a transmembrane protein also known as complement membrane cofactor protein, MCP, and measles virus receptor. It is widely expressed on leukocytes, platelets, epithelial cells and fibroblasts. Multiple isoforms of CD46 have been reported with molecular weights ranging from 45-75 kD; CD46 binds complement components C3b and C4b and has also been reported to play a role in T cell regulation. In addition to the complement components, CD46 has been shown to interact with moesin, c-Src, tetraspanin 4, c-Yes, and integrin β 1. CD46 is also known to be a cellular receptor for human measles virus and human herpes virus-6. Defects in CD46 have been associated with hemolytic-uremic syndrome. The MEM-258 antibody has been shown to be useful for flow cytometry, Western blotting, and immunoprecipitation.

Antigen References:

1. Dorig RE, *et al.* 1993. *Cell* 75:295.
2. Cui W, *et al.* 1993. *J. Immunol.* 151:4137.
3. Kemper C, *et al.* 2003. *Nature* 421:388.
4. Marie JC, *et al.* 2002. *Nat. Immunol.* 3:659.

Related Products:

Product	Clone	Application
FITC Mouse IgG1, κ Isotype Ctrl	MOPC-21	FC, ICFC
Cell Staining Buffer		FC, ICC, ICFC
RBC Lysis Buffer (10X)		FC, ICFC
Human TruStain FcX™ (Fc Receptor Blocking Solution)		FC, ICC, ICFC



For research use only. Not for diagnostic use. Not for resale. BioLegend will not be held responsible for patent infringement or other violations that may occur with the use of our products.



*These products may be covered by one or more Limited Use Label Licenses (see the BioLegend Catalog or our website, www.biolegend.com/ordering#license). BioLegend products may not be transferred to third parties, resold, modified for resale, or used to manufacture commercial products, reverse engineer functionally similar materials, or to provide a service to third parties without written approval of BioLegend. By use of these products you accept the terms and conditions of all applicable Limited Use Label Licenses. Unless otherwise indicated, these products are for research use only and are not intended for human or animal diagnostic, therapeutic or commercial use.