

# Product Data Sheet

## Purified anti-human CD43

**Catalog # / Size:** 343202 / 100 µg

**Clone:** CD43-10G7

**Isotype:** Mouse IgG1, κ

**Immunogen:** MV4-11 cell line

**Reactivity:** Human

**Preparation:** The antibody was purified by affinity chromatography.

**Formulation:** Phosphate-buffered solution, pH 7.2, containing 0.09% sodium azide.

**Concentration:** 0.5 mg/ml

**Storage:** The antibody solution should be stored undiluted at 4°C.

## Applications:

**Applications:** FC - Quality tested  
 IP - Reported in the literature

**Recommended Usage:** Each lot of this antibody is quality control tested by immunofluorescent staining with flow cytometric analysis. For immunofluorescent staining, the suggested use of this reagent is ≤0.5 µg per million cells in 100 µl volume. It is recommended that the reagent be titrated for optimal performance for each application.

**Application References:** 1. Rosenkranz AR, *et al.* 1993. *Immunology*. 80:431  
 2. Skubitz KM, *et al.* 1998. *J. Leukoc. Biol.* 64:800

**Description:** CD43, also known as Ly-48, Leukosialin, Sialophorin, Leukocyte Sialoglycoprotein, and W3/13, is a large single chain of type I transmembrane glycoprotein with abundant O-glycosylation and sialylation sites. It has been reported that CD43 binds to CD54 and Siglec-1. CD43 plays dual roles in cell adhesion and anti-adhesion, as well as costimulation of T cell activation and survival, and induction of apoptosis of T cells and hematopoietic progenitors.

**Antigen References:** 1. Neil Barclay A, *et al.* 1997. *The Leucocyte Antigen Facts Book: Second Edition*. Page 238  
 2. Killeen A, *et al.* 1987. *EMBO J.* 6(13):4029.  
 3. Thurman EC, *et al.* 1998. *Intl. Immunol.* 10:691.  
 4. Onami TM, *et al.* 2002. *J. Immunol.* 168:6022.  
 5. Tong J, *et al.* 2004. *J. Exp. Med.* 199:1277.  
 6. Jones AT, *et al.* 1994. *J. Immunol.* 153:3426.

### Related Products:

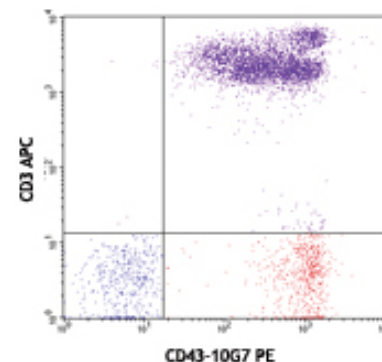
**Product**  
 Purified Mouse IgG1, κ Isotype Ctrl  
 Cell Staining Buffer  
 RBC Lysis Buffer (10X)

### Clone

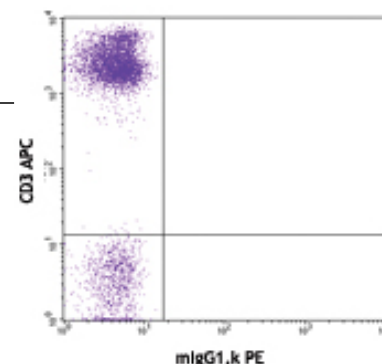
MOPC-21

### Application

FC, ICFC, ICC, IF, IHC, IP, WB  
 FC, ICC, ICFC  
 FC, ICFC



Human peripheral blood lymphocytes stained with CD43-10G7 PE and CD3 APC (top) or mouse IgG1, PE κ isotype control and CD3 APC (bottom).



For research use only. Not for diagnostic use. Not for resale. BioLegend will not be held responsible for patent infringement or other violations that may occur with the use of our products.



\*These products may be covered by one or more Limited Use Label Licenses (see the BioLegend Catalog or our website, [www.biollegend.com/ordering#license](http://www.biollegend.com/ordering#license)). BioLegend products may not be transferred to third parties, resold, modified for resale, or used to manufacture commercial products, reverse engineer functionally similar materials, or to provide a service to third parties without written approval of BioLegend. By use of these products you accept the terms and conditions of all applicable Limited Use Label Licenses. Unless otherwise indicated, these products are for research use only and are not intended for human or animal diagnostic, therapeutic or commercial use.