

## PE anti-human CD44

**Catalog # / Size:** 338807 / 25 tests  
338808 / 100 tests

**Clone:** BJ18

**Isotype:** Mouse IgG1  $\kappa$

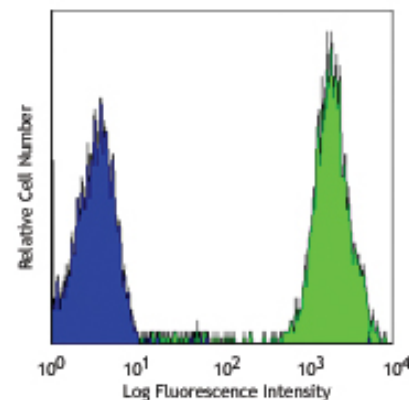
**Workshop Number:** VI A034

**Reactivity:** Human

**Preparation:** The antibody was purified by affinity chromatography, and conjugated with PE under optimal conditions. The solution is free of unconjugated PE and unconjugated antibody.

**Formulation:** Phosphate-buffered solution, pH 7.2, containing 0.09% sodium azide and 0.2% (w/v) BSA (origin USA).

**Storage:** The antibody solution should be stored undiluted at 4°C and protected from prolonged exposure to light. **Do not freeze.**



Human peripheral blood lymphocytes stained with BJ18 PE

## Applications:

**Applications:** FC - Quality tested

**Recommended Usage:** Each lot of this antibody is quality control tested by immunofluorescent staining with flow cytometric analysis. **Test size products are transitioning from 20  $\mu$ l to 5  $\mu$ l per test.** Please check your vial or your CoA to find the suggested use of this reagent per million cells in 100  $\mu$ l staining volume or per 100  $\mu$ l of whole blood. It is recommended that the reagent be titrated for optimal performance for each application. Read more at [www.biolegend.com/testsize](http://www.biolegend.com/testsize) regarding the test size change.

**Application References:** 1. Kishimoto T, *et al.* eds. 1997 *Leucocyte Typing VI: White Cell Differentiation Antigen*. Garland Publishing Inc.

**Description:** CD44 is a 80-95 kD glycoprotein also known as Hermes, Pgp1, H-CAM, or HUTCH. It is expressed on all leukocytes, endothelial cells, hepatocytes, and mesenchymal cells. As B and T cells become activated or progress to the memory stage, CD44 expression increases from a low or mid level of intensity to high expression levels. Thus, CD44 has been reported to be a valuable marker for memory cell subsets. CD44 is an adhesion molecule involved in leukocyte attachment to and rolling on endothelial cells, homing to peripheral lymphoid organs and to the sites of inflammation, and leukocyte aggregation.

**Antigen References:** 1. Barclay AN, *et al.* 1997. The Leukocyte Antigen FactsBook Academic Press.  
2. Haynes BF, *et al.* 1991. *Cancer Cells* 3:347.  
3. Goldstein LA, *et al.* 1989. *Cell* 56:1063.  
4. Mikecz K, *et al.* 1995. *Nat. Med.* 1:558.

**Related Products:**

**Product**  
PE Mouse IgG1,  $\kappa$  Isotype Ctrl (FC)  
Cell Staining Buffer  
RBC Lysis Buffer (10X)  
Human TruStain FcX™ (Fc Receptor Blocking Solution)

**Clone**  
MOPC-21

**Application**  
FC  
FC, ICC, ICFC  
FC, ICFC  
FC, ICC, ICFC



For research use only. Not for diagnostic use. Not for resale. BioLegend will not be held responsible for patent infringement or other violations that may occur with the use of our products.



\*These products may be covered by one or more Limited Use Label Licenses (see the BioLegend Catalog or our website, [www.biolegend.com/ordering#license](http://www.biolegend.com/ordering#license)). BioLegend products may not be transferred to third parties, resold, modified for resale, or used to manufacture commercial products, reverse engineer functionally similar materials, or to provide a service to third parties without written approval of BioLegend. By use of these products you accept the terms and conditions of all applicable Limited Use Label Licenses. Unless otherwise indicated, these products are for research use only and are not intended for human or animal diagnostic, therapeutic or commercial use.