

Product Data Sheet

Purified anti-human CD44

Catalog # / Size: 338801 / 25 µg
338802 / 100 µg

Clone: BJ18

Isotype: Mouse IgG1 κ

Workshop Number: VI A034

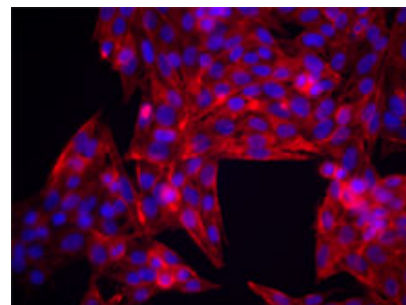
Reactivity: Human

Preparation: The antibody was purified by affinity chromatography.

Formulation: Phosphate-buffered solution, pH 7.2, containing 0.09% sodium azide.

Concentration: 0.5 mg/ml

Storage: The antibody solution should be stored undiluted at 4°C.



MDA-MB-231 cells were stained with anti-CD44 (clone BJ18), followed by Alexa Fluor® 546 secondary antibody and DAPI (nuclei). Images were acquired on a Nikon FC300 inverted microscope at 20X magnification. Data provided by Dr. John Nolan, La Jolla Bioengineering Institute.

Applications:

Applications: FC - *Quality tested*
CyTOF®, IF - *Validated*

Recommended Usage: Each lot of this antibody is quality control tested by immunofluorescent staining with flow cytometric analysis. For immunofluorescent staining, the suggested use of this reagent is ≤0.5 µg per million cells in 100 µl volume. It is recommended that the reagent be titrated for optimal performance for each application.

Application References: 1. Kishimoto T, *et al.* eds. 1997 *Leucocyte Typing VI: White Cell Differentiation Antigen*. Garland Publishing Inc.

Description: CD44 is a 80-95 kD glycoprotein also known as Hermes, Pgp1, H-CAM, or HUTCH. It is expressed on all leukocytes, endothelial cells, hepatocytes, and mesenchymal cells. As B and T cells become activated or progress to the memory stage, CD44 expression increases from a low or mid level of intensity to high expression levels. Thus, CD44 has been reported to be a valuable marker for memory cell subsets. CD44 is an adhesion molecule involved in leukocyte attachment to and rolling on endothelial cells, homing to peripheral lymphoid organs and to the sites of inflammation, and leukocyte aggregation.

Antigen References: 1. Barclay AN, *et al.* 1997. *The Leukocyte Antigen FactsBook* Academic Press.
2. Haynes BF, *et al.* 1991. *Cancer Cells* 3:347.
3. Goldstein LA, *et al.* 1989. *Cell* 56:1063.
4. Mikecz K, *et al.* 1995. *Nat. Med.* 1:558.

Related Products:

Product
Purified Mouse IgG1, κ Isotype Ctrl
Cell Staining Buffer
RBC Lysis Buffer (10X)

Clone
MG1-45

Application
FC, ICC, ICFC, IF, IHC, IP, WB
FC, ICC, ICFC
FC, ICFC



For research use only. Not for diagnostic use. Not for resale. BioLegend will not be held responsible for patent infringement or other violations that may occur with the use of our products.



*These products may be covered by one or more Limited Use Label Licenses (see the BioLegend Catalog or our website, www.biollegend.com/ordering#license). BioLegend products may not be transferred to third parties, resold, modified for resale, or used to manufacture commercial products, reverse engineer functionally similar materials, or to provide a service to third parties without written approval of BioLegend. By use of these products you accept the terms and conditions of all applicable Limited Use Label Licenses. Unless otherwise indicated, these products are for research use only and are not intended for human or animal diagnostic, therapeutic or commercial use.