

# Product Data Sheet

## FITC anti-human CD154

**Catalog # / Size:** 310804 / 100 tests

**Clone:** 24-31

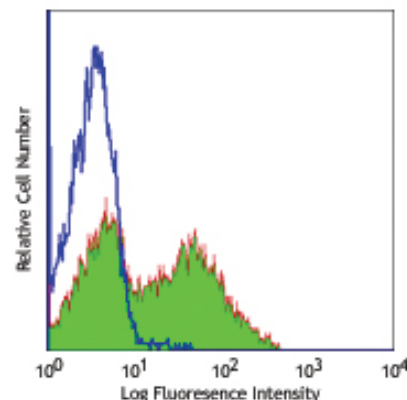
**Isotype:** Mouse IgG1,  $\kappa$

**Reactivity:** Human, **Cross-Reactivity:** Cynomolgus, Rhesus

**Preparation:** The antibody was purified by affinity chromatography, and conjugated with FITC under optimal conditions. The solution is free of unconjugated FITC.

**Formulation:** Phosphate-buffered solution, pH 7.2, containing 0.09% sodium azide and 0.2% (w/v) BSA (origin USA).

**Storage:** The antibody solution should be stored undiluted at 4°C and protected from prolonged exposure to light. **Do not freeze.**



TPA+ ionomycin-stimulated human PBMCs (6 hours) stained with 24-31 FITC

## Applications:

**Applications:** FC - Quality tested

**Recommended Usage:** Each lot of this antibody is quality control tested by immunofluorescent staining with flow cytometric analysis. **Test size products are transitioning from 20  $\mu$ l to 5  $\mu$ l per test.** Please check your vial or your CoA to find the suggested use of this reagent per million cells in 100  $\mu$ l staining volume or per 100  $\mu$ l of whole blood. It is recommended that the reagent be titrated for optimal performance for each application. Read more at [www.biolegend.com/testsize](http://www.biolegend.com/testsize) regarding the test size change.

**Application Notes:** Additional reported applications (for the relevant formats) include: immunofluorescence microscopy<sup>1,3</sup> and blocking of T cell-dependent B cell differentiation<sup>1,2,4,5</sup>. The LEAF™ purified antibody (Endotoxin <0.1 EU/ $\mu$ g, Azide-Free, 0.2  $\mu$ m filtered) is recommended for functional assays (Cat. No. 310812). For highly sensitive assays, we recommend Ultra-LEAF™ purified antibody (Cat. No. 310828) with a lower endotoxin limit than standard LEAF™ purified antibodies (Endotoxin <0.01 EU/ $\mu$ g).

**Application References:**

1. Brams P, *et al.* 2001. *Int. Immunopharmacol.* 1:277. (Block, IF)
2. Rushworth SA, *et al.* 2002. *Transplantation* 73:635. (Block)
3. Berner B, *et al.* 2000. *Ann. Rheum. Dis.* 59:190. (IF)
4. Nordström T, *et al.* 2006. *J. Leukocyte Biol.* 79:319. (Block)
5. Zhang AL, *et al.* 2007. *Blood* doi:10.1182/blood-2007-02-076364. (Block) PubMed
6. Kuchen S, *et al.* 2007. *J. Immunol.* 179:5886.
7. Matus-Nicodermos R, *et al.* 2011. *J. Immunol.* 186:2164. PubMed
8. Lindner S, *et al.* 2013. *Cancer Res.* 73:2468. PubMed

**Description:** CD154 (CD40 ligand) is also known as CD40L, gp39, TRAP and T-BAM. CD40 ligand is a 32-39 kD type II transmembrane glycoprotein. It is a member of the TNF superfamily and is expressed on activated T cells. It has been reported to be important for B cell costimulation following binding of its receptor, CD40. Additionally, binding of CD40L to CD40 on B cells promotes the secretion of immunoglobulin and Ig isotype switching. CD40L is also involved in the regulation of cytokine production by T cells.

**Antigen References:**

1. Najafian N, *et al.* 2003. *Expert Opin. Biol. Ther.* 3:227.
2. Racke M, *et al.* 2002. *Expert Opin. Ther. Targets.* 6:275.
3. Ford G, *et al.* 1999. *J. Immunol.* 162:4037.

### Related Products:

**Product**  
FITC anti-human CD40  
FITC Mouse IgG1,  $\kappa$  Isotype Ctrl  
Cell Staining Buffer  
RBC Lysis Buffer (10X)  
Human TruStain FcX™ (Fc Receptor Blocking Solution)

**Clone**  
G28.5  
MOPC-21

**Application**  
FC  
FC, ICFC  
FC, ICC, ICFC  
FC, ICFC  
FC, ICC, ICFC



For research use only. Not for diagnostic use. Not for resale. BioLegend will not be held responsible for patent infringement or other violations that may occur with the use of our products.



\*These products may be covered by one or more Limited Use Label Licenses (see the BioLegend Catalog or our website, [www.biolegend.com/ordering#license](http://www.biolegend.com/ordering#license)). BioLegend products may not be transferred to third parties, resold, modified for resale, or used to manufacture commercial products, reverse engineer functionally similar materials, or to provide a service to third parties without written approval of BioLegend. By use of these products you accept the terms and conditions of all applicable Limited Use Label Licenses. Unless otherwise indicated, these products are for research use only and are not intended for human or animal diagnostic, therapeutic or commercial use.